

Countryside Campus  
Precinct  
**Zone CS19 Arboretum**



Zone Overview for Arboretum



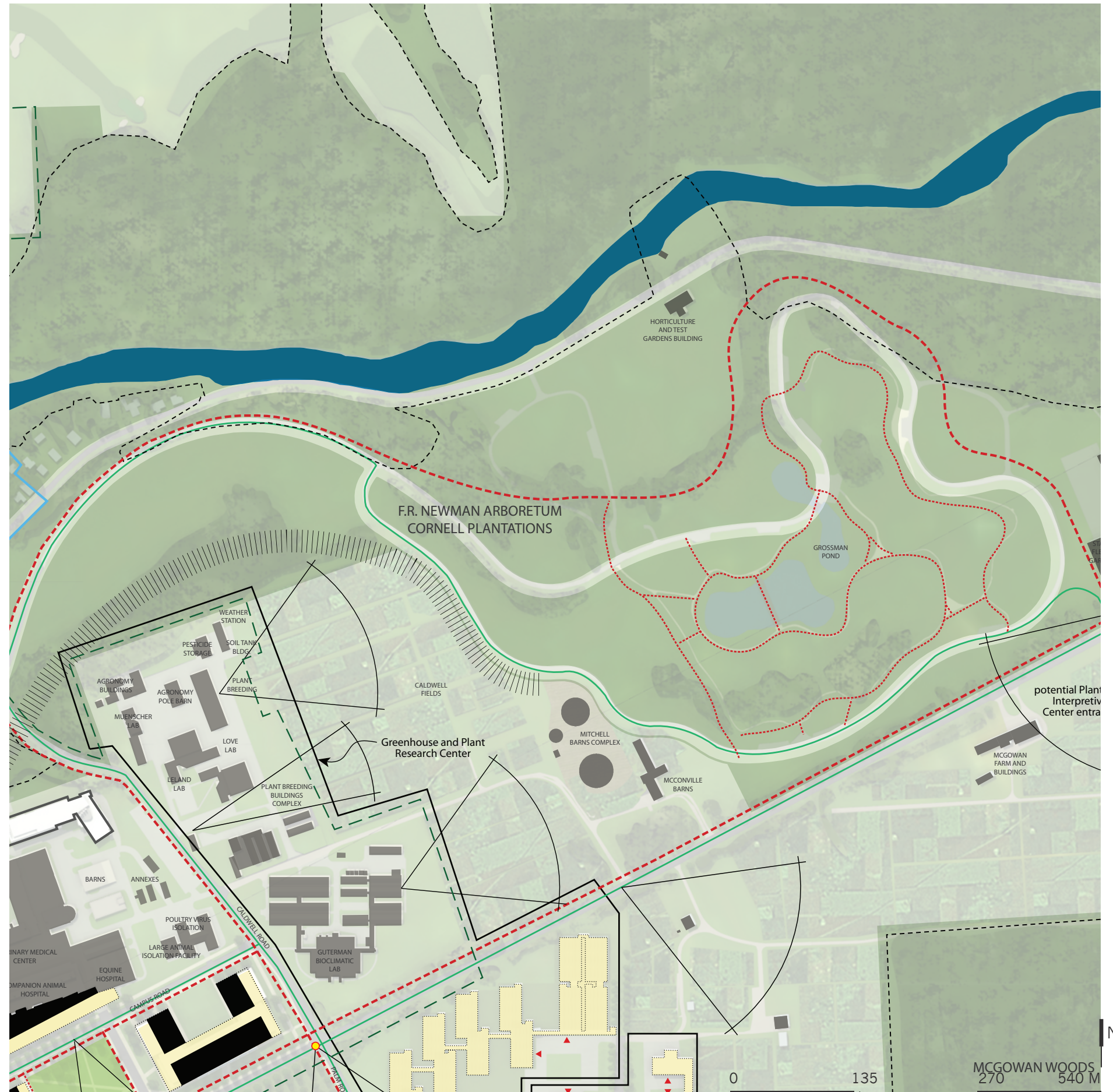
Existing Building		Transit Supportive Node	
Historic Districts (National and/or Local Register)		Potential Information Kiosks	
Historic Buildings		Gateway	
Buildings with Architectural Merit		Pedestrian Gateway	
Buildings/Planning Currently In Progress		Bike Route	
Unique Natural Area		Primary Pedestrian Route	
Potential Building Footprint: Program / Public		Secondary Pedestrian Route	
Primary Entrance		Steep Terrain / Slope	
Transit Circulator Loop with Stop		Important View	
Transportation Hub			

## Zone CS19 Executive Summary

This zone occupies the Fall Creek valley east of Caldwell Road. It forms part of the Cornell Plantations and, as the University's arboretum, is an irreplaceable academic resource and open space amenity. This zone is a comprehensive outdoor facility unto itself.

## General Guidelines

- No development is anticipated within this zone. Any proposed changes must be in keeping with the overall mission of the Arboretum and the Plantations.
- A new entrance to the Arboretum may be considered from Game Farm Road and Route 366/Dryden Road. This location has also been identified as a campus gateway, and landscape and movement patterns should highlight the importance of this entry to campus.
- Views to the Arboretum from Dryden Road may be enhanced, contributing to the sense of arrival to the campus from the east.



General Guidelines for Arboretum