

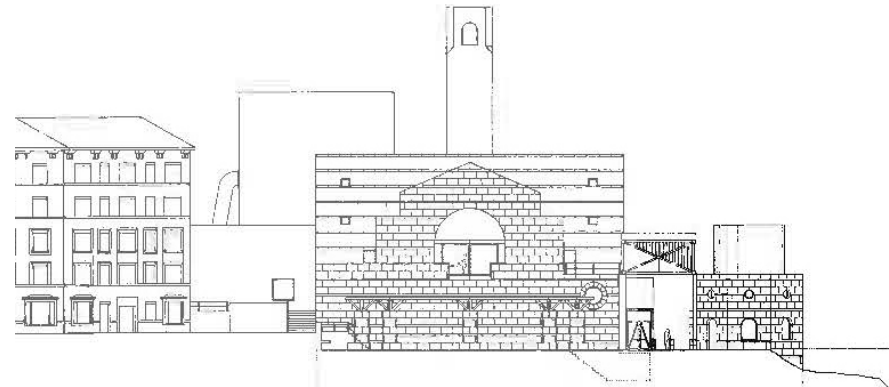
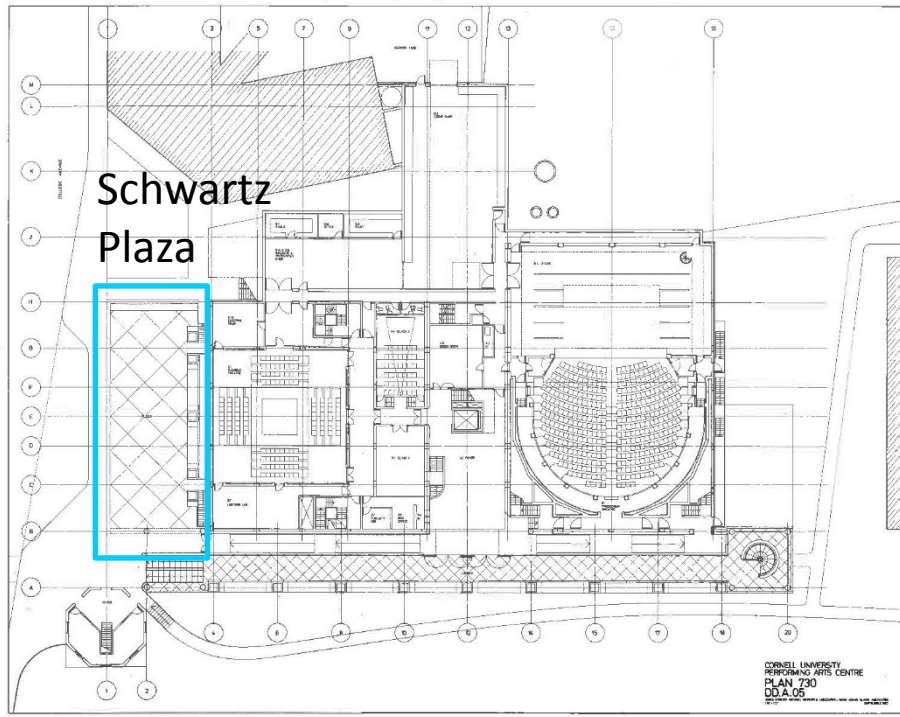


# Schwartz Center for Performing Arts Plaza Improvements

Sketch Plan Presentation  
City of Ithaca Planning & Development Board  
February 28, 2017

# Schwartz Center for Performing Arts

Designed by James Stirling Michael Wilford and Associates - 1982



# Project Study and Construction Areas



Schwartz Center Plaza  
Study Area

Project  
Construction Area

Project Study  
Area

Schwartz Center

CASCADILLA PL

COLLEGE AVE

DRYDEN RD

EDDY ST

BUFFALO ST

HOLLISTER

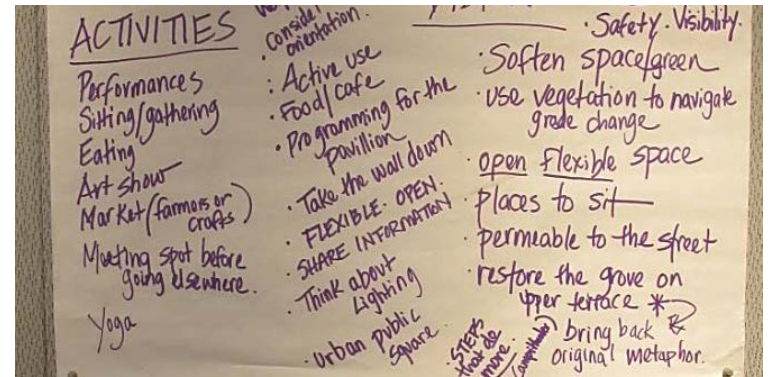
DRYDEN CT

EN AVE

# Public Process

## Programming ideas

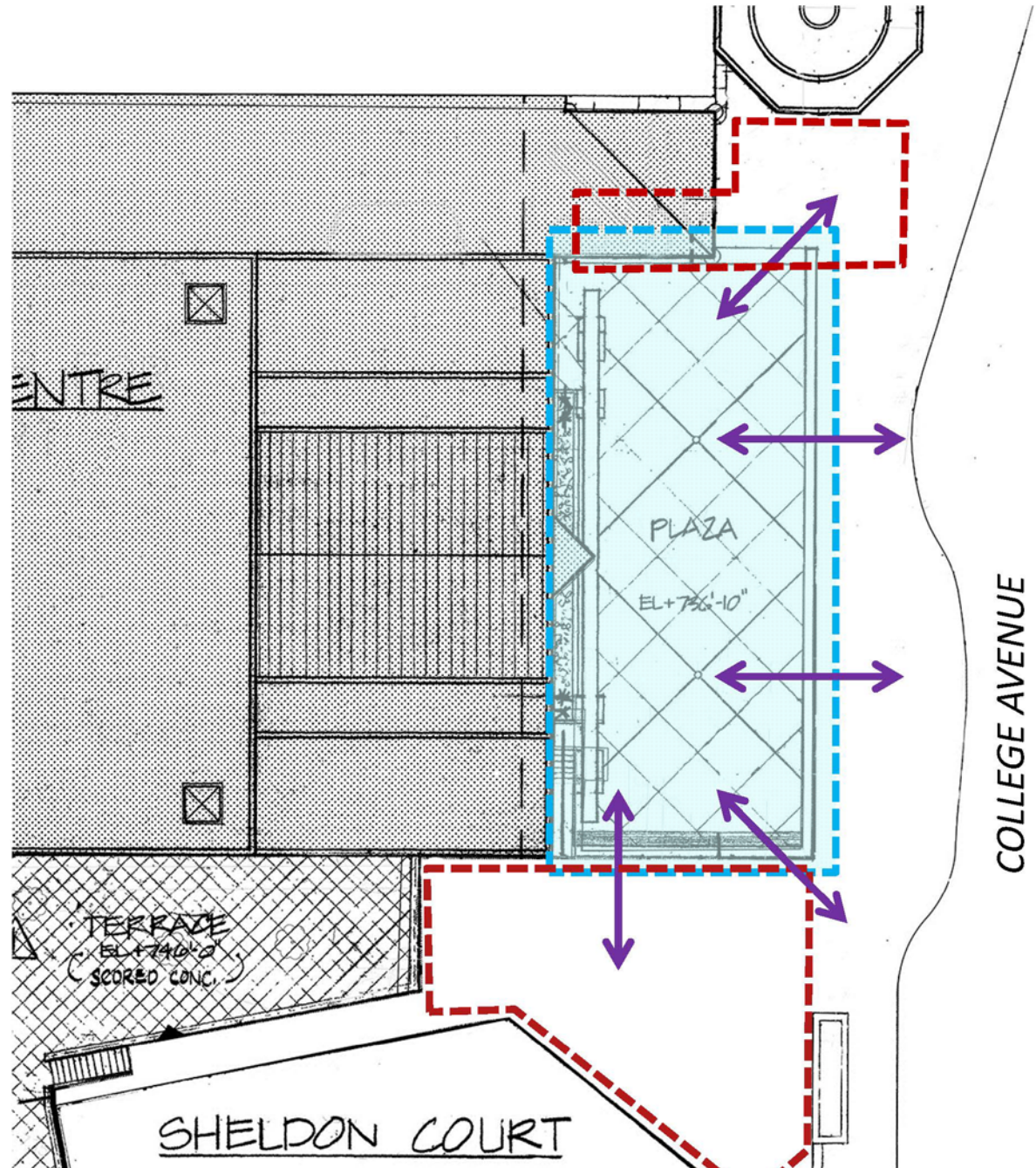
- Performances
- Greet, meet & eat
- Art show
- Tabling, sharing information
- Market – farmers, crafts
- Bike share
- Classes – yoga
- Studying – wi-fi & power
- Transit hub enhancements
- Connection to gorge



# Public Process

## Design Goals:

1. Porosity
2. Connection
3. Flexibility
4. Inhabitability
5. Respect for context and architecture



# Final Concept Site Plan



# Design View from College Avenue



# View South



# Close Up



# Material Details

Right: Granite stair treads, thermal finish

Below left: blue stone seat wall with granite setts on granular base

Below right: LED bollard lighting



# Study Area - Adjacent Opportunities



## Gateway Connections

- Enhance pedestrian entry to campus
- Highlight connection to gorge
- Upgrade walk to Eddy Gate

## Upgrade Eisner Pavilion

- Seating, lighting, trash receptacles
- TCAT “Next Bus” technology

## Oak Avenue Intersection

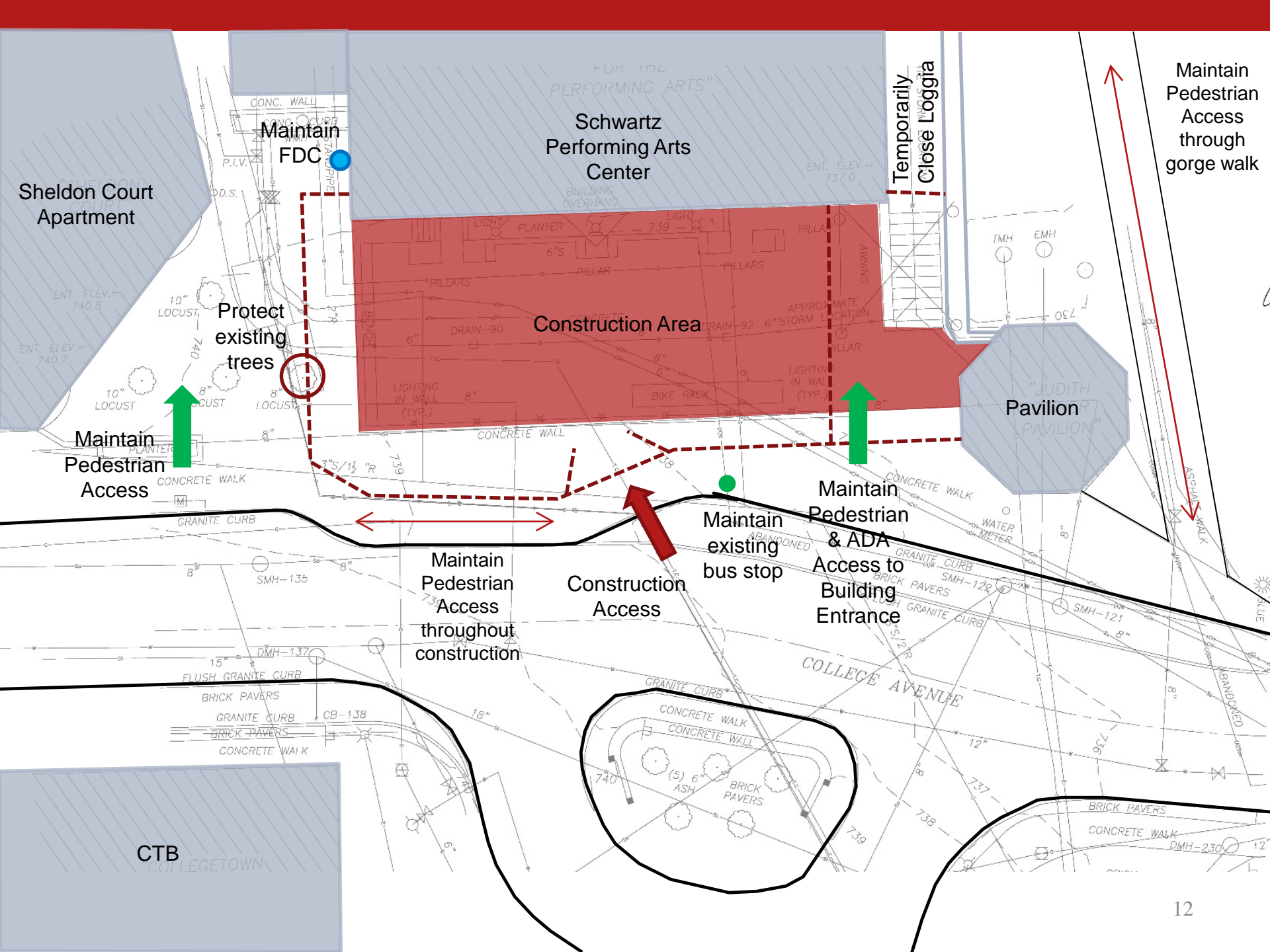
- Convert to “T” intersection
- Expand pedestrian and bicycle accommodations

## Sheldon Court Terrace

- Add seating and lighting
- Recruit new tenant for ground level that helps activate the plaza

# Project Schedule

Fall 2016	Public planning and design
Winter 2017	Technical documents / Municipal approvals
Spring 2017	Bidding and award of project
Summer 2017	Plaza construction



Sheldon Court Apartment

Maintain FDC

Schwartz Performing Arts Center

Temporarily Close Loggia

Protect existing trees

Construction Area

Pavilion

Maintain Pedestrian Access

Maintain existing bus stop

Maintain Pedestrian & ADA Access to Building Entrance

Maintain Pedestrian Access throughout construction

Construction Access

Maintain Pedestrian Access through gorge walk

CTB

# Discussion & Questions

