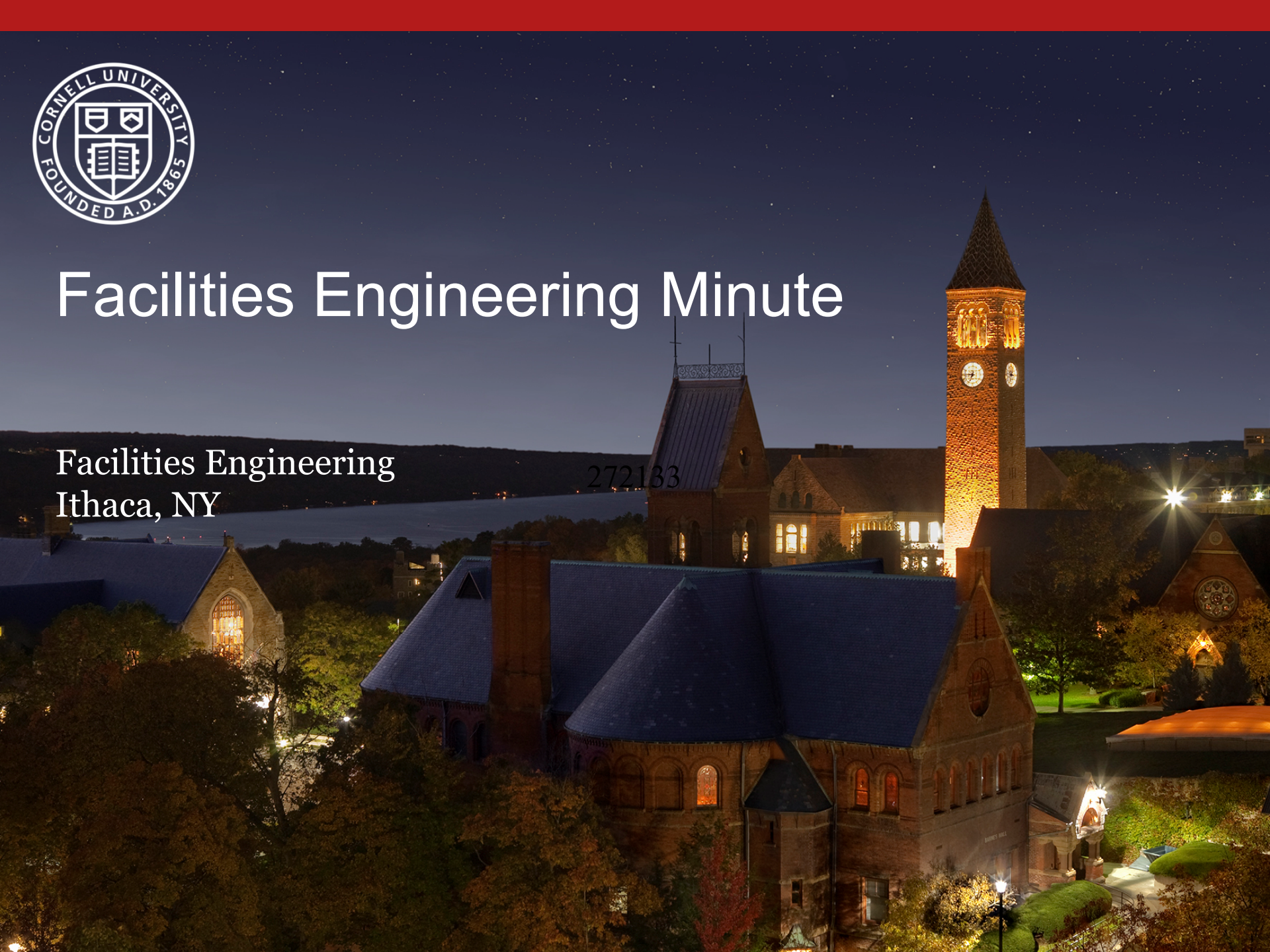


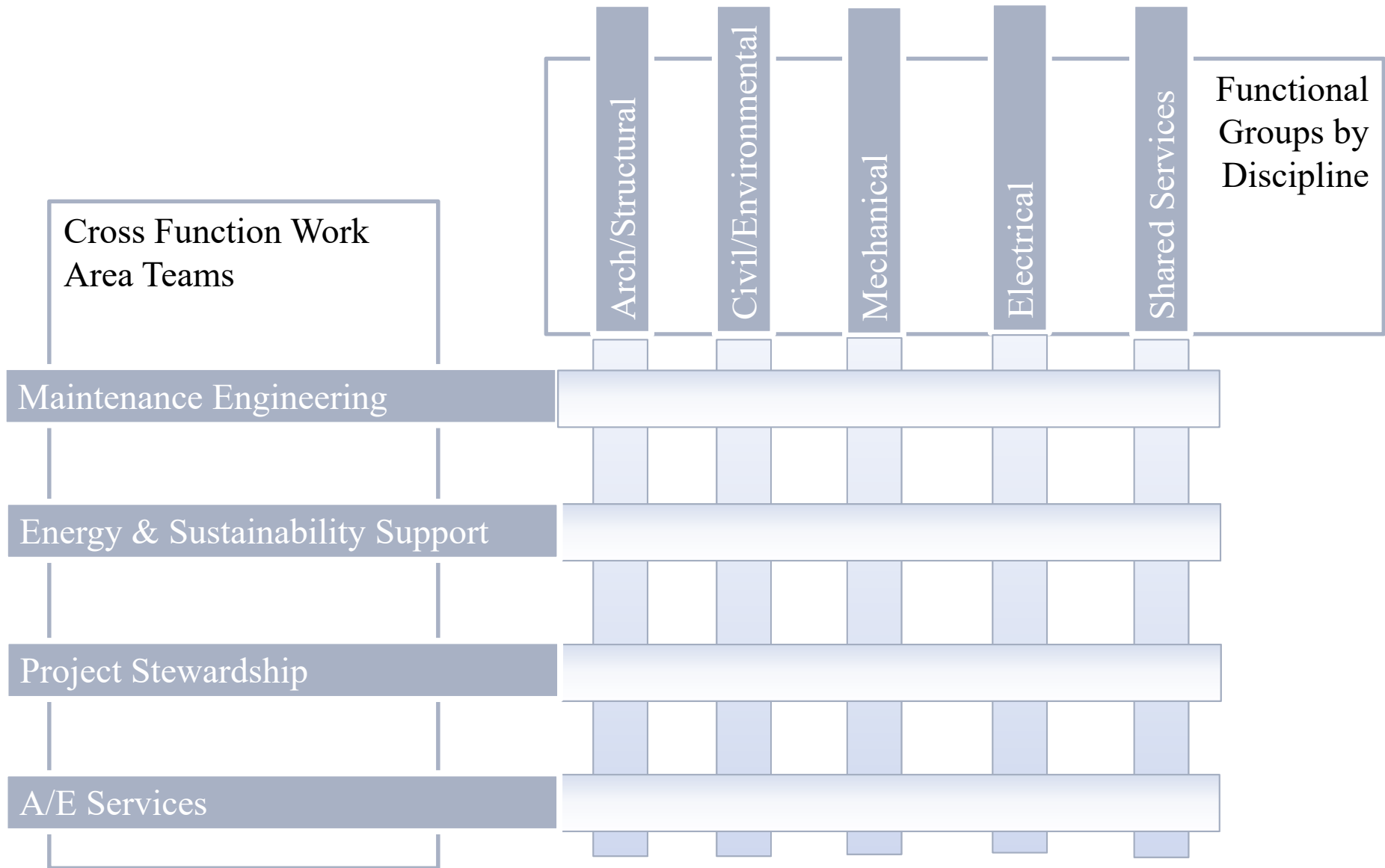
Facilities Engineering Minute

Facilities Engineering
Ithaca, NY

272133



Facilities Engineering Org Structure - Balanced Matrix



Facilities Engineering Work Area Teams as of January 1, 2019

Maintenance Engineering Facilities Management & Transportation

- Maintenance Program Management, Quick Response Investigations, Maintenance Planning Support
- Co-Team Leaders: Matt Reiter, Tom Jordan & Rob Murray

Energy & Sustainability Support Energy & Sustainability

- E&S Program Management (DSNY, Utility Mapping, Modeling), Energy Engineering, Special investigation & initiatives
- Co-Team Leaders: Vince Knapp, Matt Kozlowski, Erich Reichard

Architecture and Engineering Services

- Construction Documents/Studies/Condition Assessments/OPC's
- Co-Team Leaders: John Bell, Randy Herko

Project Stewardship

- Design Reviews, Design and Construction Standards, Capital Project Support (PM & CM Partnering)
- Co-Team Leaders: Steve Beyers, Elizabeth Kolacki

Pre-installation Meetings

- Purpose
- Example Systems with FE Contact
 - Roofs – Shane Dunn (smd75)
 - Generators – Chris Wayman (cmw266)
 - Fire Protection – Tom Jordan (tom.jordan)
 - Concrete – Matt Reiter (mtr68)
 - Stone Masonry – Rob Murray (rbm234)
 - Medium Voltage – Erich Reichard (etr33)

Codes Corner – IBC vs. IEBC vs. IPMC

- 2015 International Building Code (IBC)
 - Pertains to New Construction
- 2015 Existing Building Code (IEBC)
 - Pertains to Alterations
 - Refers back to IBC
- 2015 Property Maintenance Code (IPMC)
 - Pertains to existing occupied buildings
 - Continuously enforceable
- 2017 NYS Uniform Code Supplement
 - Augments/Replaces information in the 2015 Codes

Codes Corner – Fully Sprinklered vs. Fully Protected

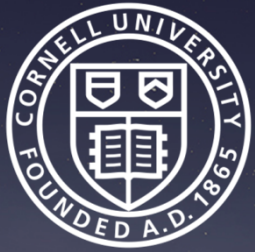
- A Fully Protected building isn't necessarily Fully Sprinklered

§BC904.2.1 Restriction on using automatic sprinkler system exceptions or reductions.

Automatic fire-extinguishing systems shall not be considered alternatives for the purposes of exceptions or reductions allowed for *automatic sprinkler systems* or by other requirements of this code.

Codes Corner – Fully Sprinklered vs. Fully Protected

- Example: Campus Lab Building
 - Server room protected ONLY by Halon
 - Remainder of bldg. sprinkler protected
- Will NOT allow for:
 - Travel distance increases (Table 1017.2)
 - Maximum Allowable Quantities increases (Tables 307.1(1) and (2))
 - Fire Partition Rating Reductions (708.3)



PM Feedback & Dialogue

