

# **Cayuga Lake Water Quality Monitoring, Related to the LSC Facility: 2009**

Prepared by:  
DeFrees Hydraulics Laboratory  
School of Civil and Environmental Engineering  
Cornell University  
Ithaca, NY 14853-3501

Sponsored by:  
Cornell University  
Department of Utilities and Energy Management

March 30, 2010

# Contents

|   |           |
|---|-----------|
| <b>1 Objective/Study Area</b>   | <b>1</b>  |
| <b>2 Design</b>   | <b>1</b>  |
| 2.1 Description of Parameters Selected for Monitoring . . . . .                               | 1         |
| 2.1.1 Phosphorus (P) . . . . .  | 1         |
| 2.1.2 Clarity/Optical Properties . . . . .  | 2         |
| 2.1.3 Chlorophyll/Fluorescence . . . . .  | 2         |
| 2.1.4 Temperature . . . . .   | 2         |
| 2.2 Timing . . . . .  | 3         |
| 2.3 Locations . . . . .   | 3         |
| 2.4 Field Measurements . . . . .  | 6         |
| 2.5 Field Methods . . . . .   | 6         |
| 2.6 Laboratory Analyses, Protocols . . . . .  | 6         |
| 2.7 Quality Assurance/Control Program . . . . .   | 6         |
| 2.7.1 Field Program . . . . .   | 7         |
| 2.7.2 Laboratory Program . . . . .  | 7         |
| <b>3 Results, 2009</b>  | <b>8</b>  |
| <b>4 Selected Topics</b>  | <b>14</b> |
| 4.1 Measures of Clarity . . . . .   | 14        |
| 4.2 Inputs of Phosphorus to the Southern End of Cayuga Lake . . . . .                         | 14        |
| 4.3 Variations in Runoff and Wind Speed . . . . .   | 22        |
| 4.4 Limitations in Measures of Trophic State on the Shelf . . . . .                           | 22        |
| 4.5 Continuation of the Long-Term Record of Water Quality/Eutrophication Indicators . . . . . | 23        |
| 4.6 Comparison to Other Finger Lakes: Chlorophyll-a . . . . .                                 | 25        |
| 4.7 Interannual Comparisons . . . . .   | 26        |
| <b>5 Noteworthy Observations from the 2009 Data</b>   | <b>31</b> |
| <b>6 Summary</b>  | <b>33</b> |
| <b>References</b>   | <b>34</b> |
| <b>Appendix A In Lake Monitoring Data Listing</b>   | <b>37</b> |
| <b>Appendix B Lake Source Cooling Discharge Monitoring Report Data</b>                        | <b>40</b> |

## List of Figures

|           |  |    |
|-----------|--|----|
| Figure 1  | Sampling sites, setting, approximate bathymetry, for LSC monitoring program, southern end of Cayuga Lake. Sites sampled during the 1994 - 1996 study (P2, P4 and S11; Stearns and Wheler 1997) are included for reference. Locations of sampling sites and outfalls are approximate. . . . .   | 4  |
| Figure 2  | Sampling sites for LSC monitoring program, within the context of the entire Cayuga Lake basin. . . . .   | 5  |
| Figure 3  | Time series of parameter values for Cayuga Lake for 2009: (a) Temperature at pile cluster (near site 3) and Fall Creek inflow record, (b) TP, (c) SRP, (d) Turbidity, (e) Chlorophyll-a. Values at site 8 are compared with the average value on the shelf. "x" symbols represent individual values measured at separate sites on the shelf. . .   | 10 |
| Figure 4  | Time series of parameter values for Cayuga Lake for 2009: (a) Turbidity, (b) Secchi disc depth, and (c) Chlorophyll-a. Results for the "shelf" are averages; "x" symbols represent individual values measured at separate sites on the shelf. . . . .  | 11 |
| Figure 5  | Time series of parameter values for the LSC influent and effluent for 2009: (a) TP (influent was not measured), (b) SRP, and (c) Tn. The median of triplicate samples was used as the representative value. "+" symbols represent values of additional triplicate samples. . . . .   | 12 |
| Figure 6  | Time series of parameter values for the south shelf and the LSC effluent for 2009: (a) TP, (b) SRP, and (c) Turbidity. Results for the "shelf" are averages; "x" symbols represent individual values measured at separate sites on the shelf. . . . .  | 13 |
| Figure 7  | Comparison of observed parameters at site 2 and the shelf average. . . . .   | 14 |
| Figure 8  | Time series of estimated relative monthly external loads of phosphorus to the southern portion of Cayuga Lake, partitioned according to source: (a) 2000, (b) 2001, (c) 2002, (d) 2003, (e) 2004, (f) 2005, (g) 2006, (h) 2007, (i) 2008 and (j) 2009. Loads are for total phosphorus with the exception of tributary loading, which is for total soluble phosphorus. . . . .  | 19 |
| Figure 9  | Trends in point source TP loading to the southern shelf: (a) mean daily loading in the May - October period, 2000 - 2009, (b) monthly mean loading in 2009. . . . .  | 20 |
| Figure 10 | Time series of concentrations measured weekly in the LSC effluent for the 2000 - 2009 interval: (a) total phosphorus, (b) soluble reactive phosphorus, and (c) turbidity. The median of triplicate samples was used as the representative value. "+" symbols represent additional triplicate sample values. . . . .  | 21 |
| Figure 11 | Annual concentrations measured in the LSC effluent for the 2000 - 2009 interval: (a) total phosphorus, (b) soluble reactive phosphorus, and (c) turbidity. . . . .   | 21 |
| Figure 12 | Comparison of average Chlorophyll-a concentrations for the spring-early fall interval for the eleven Finger Lakes, based on samples (n=15 to 16) collected over the 1996 through 1999 interval (data from Callinan 2001). . . . .  | 26 |
| Figure 13 | Comparison of 2009 conditions for surface runoff, wind, and total phosphorus loading with conditions from the 1998 - 2008 interval: (a) median daily flows in Fall Creek, (b) daily average wind component along lake's long axis as measured at Game Farm Road, and (c) summed monthly loads of total phosphorus (TP) to southern Cayuga Lake from the IAWWTP, CHWWTP, and the LSC facility. . . . .  | 28 |
| Figure 14 | Comparison of 2009 conditions for total phosphorus, Chlorophyll-a, and turbidity on the south shelf of Cayuga Lake with conditions from the 1998 - 2008 interval: (a) total phosphorus (TP), (b) Chlorophyll-a, and (c) turbidity (Tn). . . . .  | 29 |
| Figure 15 | Comparison of study interval runoff, wind, total phosphorus loading, total phosphorus concentration, Chlorophyll-a concentration and turbidity. Legend marks percentile range of data. (a) Fall Creek flow, (b) wind speed, (c) summed loads of total phosphorus (TP) from the IAWWTP, CHWWTP and the LSC facility, (d) total phosphorus concentration on the south shelf, (e) Chlorophyll-a concentration on the south shelf, and (f) turbidity on the south shelf. Data plotted are from the May - October interval. Shelf data includes measurements from sites 1, 3, 4, 5 and 7. . . . . | 30 |

## List of Tables

|         |  |    |
|---------|--|----|
| Table 1 | Latitude, longitude and lake depth at ambient water quality monitoring program sites (refer to figure 1). Sites sampled during the 1994 - 1996 study (P2, P4 and S11; Stearns and Wheler 1997) are included for reference. . . . . | 6  |
| Table 2 | Specification of laboratory methods for ambient water quality monitoring. . . . .  | 7  |
| Table 3 | Summary of processing, preservation, storage containers and holding times for laboratory measurements; see codes below. . . . .  | 7  |
| Table 4 | Precision for triplicate sampling/measurement program for key parameters for 2009, represented by the average coefficient of variation (CV = standard deviation/mean). . . . .   | 8  |
| Table 5 | Summary of monitoring program results according to site, 2009. . . . .   | 9  |
| Table 6 | Estimates of monthly loads of phosphorus to the southern portion of Cayuga Lake over the 2000 to 2009 interval. . . . .  | 17 |
| Table 7 | Average values and standard deviations for TP, SRP, and Tn in the LSC effluent and on the shelf. Averages determined from observations made during the April - October interval of 2009. . . . .                                   | 20 |
| Table 8 | Summer (June - August) average total phosphorus (TP) concentrations for the upper waters of Cayuga Lake. June - September averages are included in parentheses for the 1998 - 2009 study years. . . . .                            | 24 |
| Table 9 | Summer (June - August) average Chlorophyll-a concentrations for the upper waters of Cayuga Lake. June - September averages are included in parentheses for the 1998 - 2009 study years. . . . .                                    | 25 |

## Preface

This report summarizes the results of water quality monitoring efforts related to Cornell University's Lake Source Cooling (LSC) facility in 2009. This monitoring program began in 1998 and was performed annually by the Upstate Freshwater Institute (UFI) until 2006. In 2007 water sample collection and generation of the annual report was taken over by the DeFrees Hydraulics Laboratory of the School of Civil and Environmental Engineering at Cornell University. UFI continues to carry out all laboratory analysis. The format of this report is largely based on previous annual reports written by UFI.

## 1 Objective/Study Area

The primary objective is to conduct an ambient water quality monitoring program focusing on the southern portion of Cayuga Lake to support long-term records of trophic state indicators, including concentrations of phosphorus, Chlorophyll-a, Secchi disc transparency, and other measures of water quality.

Cayuga Lake is the second largest of the Finger Lakes. A comprehensive limnological description of the lake has been presented by Oglesby (1979). The lake is monomictic (stratifies in summer), mesotrophic (intermediate level of biological productivity), and is a hardwater alkaline system. Much of the tributary inflow received by the lake enters at the southern end; e.g., ~40% is contributed by the combination of Fall Creek and Cayuga Inlet (figure 1). Effluent from two domestic wastewater treatment facilities also enters this portion of the lake (IAWWTP - Ithaca Area Waste Water Treatment Plant and CHWWTP - Cayuga Heights Waste Water Treatment Plant; figure 1). The discharge from Cornell's LSC facility enters the southern portion (south of McKinney's Point) of the lake along the east shore (figure 1). The LSC facility started operating in early July of 2000.

## 2 Design

### 2.1 Description of Parameters Selected for Monitoring

#### 2.1.1 Phosphorus (P)

Phosphorus (P) plays a critical role in supporting plant growth. Phosphorus has long been recognized as the most critical nutrient controlling phytoplankton (microscopic plants of the open waters) growth in most lakes in the north temperate zone. Degradation in water quality has been widely documented for lakes that have received excessively high inputs of phosphorus from human activity. Increases in phosphorus inputs often cause increased growth of phytoplankton in lakes. Occurrences of particularly high concentrations of phytoplankton are described as "blooms". The accelerated "aging" of lakes associated with inputs of phosphorus from human activities has been described as cultural eutrophication.

The two forms of phosphorus measured in this monitoring program, total phosphorus (TP) and soluble reactive phosphorus (SRP), are routinely measured in many limnological and water quality programs. TP is widely used as an indicator of trophic state (level of plant production). SRP is measured on filtered ( $0.45\mu\text{m}$ ) samples. SRP is a component of the total dissolved phosphorus (TDP) that is usually assumed to be immediately available to support phytoplankton growth. Particulate phosphorus (PP; incorporated in, or attached to, particles) is calculated as the difference between paired measurements of TP and TDP. The composition of PP can vary greatly in time for a particular lake, and between different lakes. Contributing components include phytoplankton and other phosphorus bearing particles that may be resuspended from the bottom or received from stream/river inputs.

### 2.1.2 Clarity/Optical Properties

The extent of the penetration of light in water (the ability to see submerged objects), described as clarity, is closely coupled to the public's perception of water quality. Light penetration is particularly sensitive to the concentration, composition and size of particles. In lakes where phytoplankton are the dominant component of the particle population, measures of clarity may be closely correlated to concentrations of TP and phytoplankton biomass (e.g., as measured by Chlorophyll-a). Clarity is relatively insensitive to phytoplankton biomass when and where concentrations of other types of particles are high. In general, light penetration is low when concentrations of phytoplankton, or other particles, are high.

Two measures of light penetration are made routinely in this program, Secchi disc transparency (in the field) and turbidity (laboratory). The Secchi disc measurement has a particularly long history in limnological studies, and has proven to be a rather powerful piece of information, even within the context of modern optical measurements. It remains the most broadly used measure of light penetration. The higher the Secchi disc measurement the greater the extent of light penetration. Turbidity (Tn), as measured with a nephelometric turbidimeter, measures the light captured from a standardized source after passage through a water sample. Turbidity and Secchi disc depth are regulated by a heterogeneous population of suspended particles that include not only phytoplankton, but also clay, silt, and other finely divided organic and inorganic matter. The higher the turbidity value the higher the concentration of particles that limit light penetration.

### 2.1.3 Chlorophyll/Fluorescence

Chlorophyll-a is the principal photosynthetic pigment that is common to all phytoplankton. Chlorophyll (usually as Chlorophyll-a) is the most widely used surrogate measure of phytoplankton biomass, and is generally considered to be the most direct and reliable measure of trophic state. Increases in chlorophyll concentrations indicate increased phytoplankton production. The major advantages of chlorophyll as a measure of phytoplankton biomass are: (1) the measurement is relatively simple and direct, (2) it integrates different types and ages of phytoplankton, (3) it accounts to some extent for viability of the phytoplankton, and (4) it is quantitatively coupled to optical properties that may influence clarity. However, the chlorophyll measurement does not resolve phytoplankton type, and the chlorophyll content per unit biomass can vary according to species and ambient environmental conditions. Therefore, it is an imperfect measure of phytoplankton biomass. Fluorescence has been widely used as a surrogate measure of chlorophyll. In this program spectrophotometric measurements are made on water samples in the laboratory.

Rather wide variations in chlorophyll concentrations can occur seasonally, particularly in productive lakes. The details of the timing of these variations, including the occurrence of blooms, often differ year-to-year. Seasonal changes in phytoplankton biomass reflect imbalance between growth and loss processes. Factors influencing growth include nutrient availability (concentrations), temperature and light. Phytoplankton are removed from the lake either by settling, consumption by small animals (e.g., zooplankton), natural death, or exiting the basin. During intervals of increases in phytoplankton, the rate of growth exceeds the summed rates of the various loss processes.

### 2.1.4 Temperature

Temperature is a primary regulator of important physical, chemical, and biochemical processes in lakes. It is perhaps the most fundamental parameter in lake monitoring programs. Lakes in the northeast go through major temperature transformations linked primarily to changes in air temperature and incident light. Important cycles in aquatic life and biochemical processes are linked to the annual temperature cycle. Deep lakes stratify in summer in this region, with the warmer less dense water in the upper layers (epilimnion) and the colder more dense water in the lower layers (hypolimnion). A rather strong temperature/density gradient in intermediate depths between the epilimnion and hypolimnion (metalimnion) limits cycling of materials from the hypolimnion to the epilimnion during summer. Gradients in temperature are largely absent over the late fall to spring interval, allowing active mixing throughout the water column (i.e., turnover).

## 2.2 Timing

Lake sampling and field measurements were conducted by boat during the spring to fall interval of 2009, beginning in mid-April and extending through late October. The full suite of laboratory and field measurements were made for 16 monitoring trips. At least two lake sampling runs were performed each month, and every effort was made to spread the sampling dates out evenly throughout the season (approximately bi-weekly). However, due to mechanical problems with the boat used for sampling, a scheduled sampling date in late August was postponed to September.

In addition to the water sample collection, recording thermistors were deployed continuously at one location. Temperature measurements were made at least hourly over the mid-April to late October interval. The thermistors were exchanged periodically with fresh units for data downloading and maintenance. Thermistors deployed in October 2008 were recovered in April 2009. Deployments made in late October 2009 will be retrieved in April 2010. Measurements are recorded on a daily basis over this latter interval. Laboratory measurements of phosphorus concentration (TP and SRP), turbidity (Tn), dissolved oxygen concentration (DO), and pH were made on samples from the LSC influent and effluent collected weekly (year round) during operation of the LSC facility.

## 2.3 Locations

An array of sampling sites (i.e., grid) has been adopted in an effort to provide a robust representation of the southern portion of the lake (figure 1 and figure 2). This sampling grid may reasonably be expected to resolve persistent water quality gradients imparted by the various inputs/inflows that enter this portion of the lake and contribute to a fair representation of average conditions for this part of the lake.

Seven sites were monitored for the full suite of parameters in the southern end of the lake (sites 1 through 7). Additionally, the intake location for the LSC facility and site 8, located further north as a reference for the main lake conditions, were also sampled. Positions (latitude, longitude, lake depth at the location) for the nine sites are specified in table 1. The configuration of sites includes two transect lines; one with 3 sites along an east-west line extending from an area near the discharge location (sites 1, 3, 4), the other with 4 sites running approximately north-south along the main axis of the lake (sites 2, 3, 5, 6). An additional site (site 7) in the southeastern corner of the shelf brackets the location of the LSC discharge from the south, while site 1 is located at a similar distance to the north of the discharge (figure 1).

Site 2, on the southern part of the shelf near the lake's centerline, is located near the discharge of the IAWWTP's effluent, and higher than average concentrations of nutrients have been measured at this location for this reason (see section 3). Sites 1 and 7 bracket the LSC discharge from the north and south. However, site 7 is located near the outfall of the CHWWTP (figure 1) and the water quality at this location can be expected to be influenced by localized effects of this proximity (similarly to site 2).

The position for thermistor deployment ("pile cluster") is shown in figure 1 and specified in table 1. The "Global Positioning System" (GPS) was used to locate the sampling/monitoring sites. A reference position located at the southern end of the lake was used to assess the accuracy of the GPS for each monitoring trip.

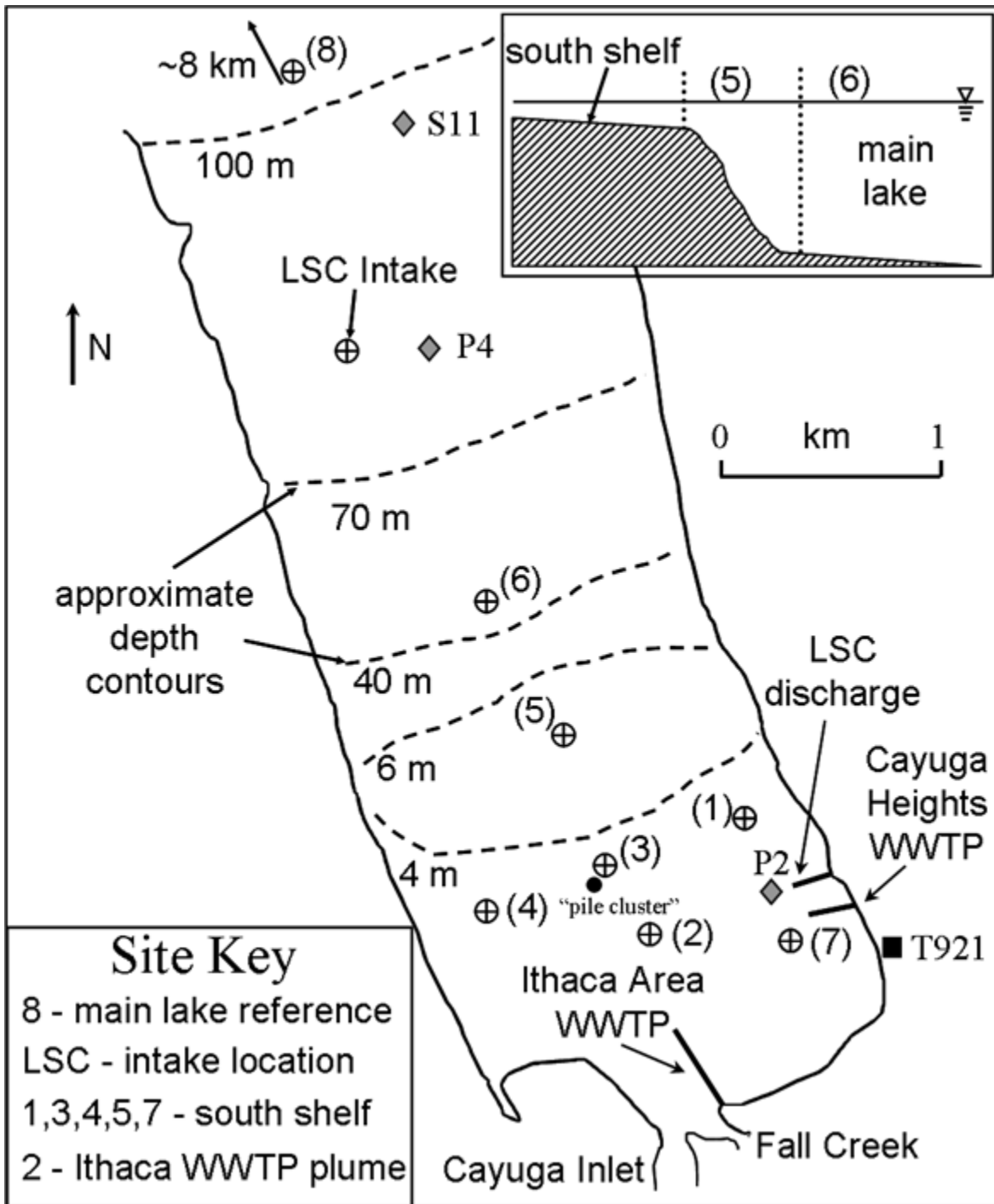


Figure 1: Sampling sites, setting, approximate bathymetry, for LSC monitoring program, southern end of Cayuga Lake. Sites sampled during the 1994 - 1996 study (P2, P4 and S11; Stearns and Wheler 1997) are included for reference. Locations of sampling sites and outfalls are approximate.



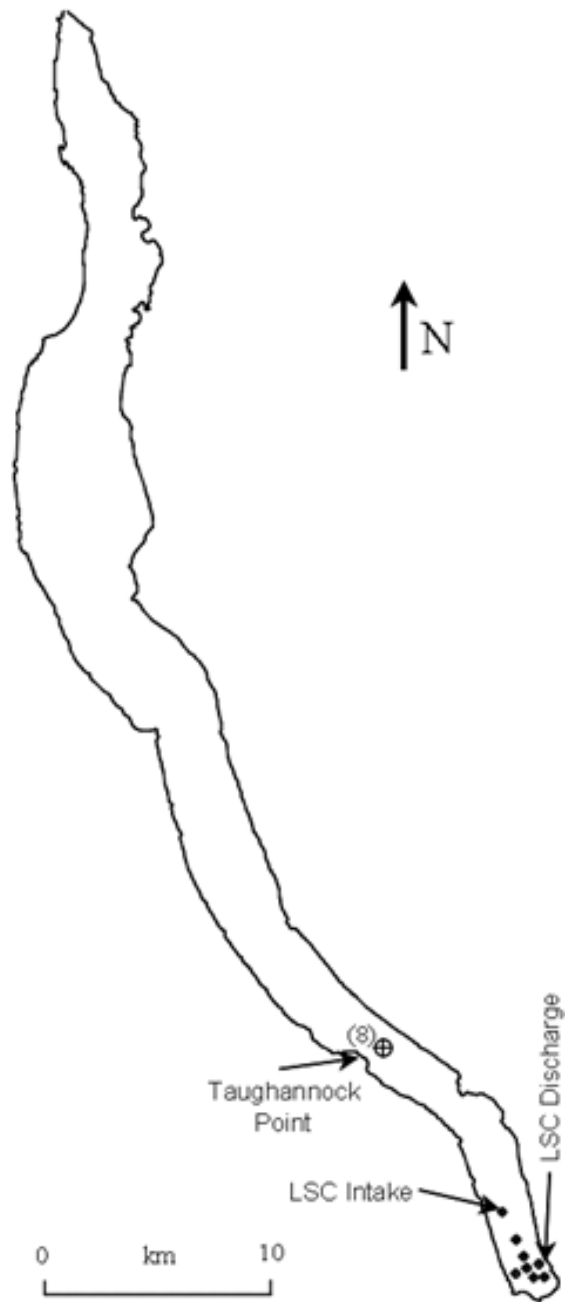


Figure 2: Sampling sites for LSC monitoring program, within the context of the entire Cayuga Lake basin.

Table 1: Latitude, longitude and lake depth at ambient water quality monitoring program sites (refer to figure 1). Sites sampled during the 1994 - 1996 study (P2, P4 and S11; Stearns and Wheler 1997) are included for reference.

| Site No.                  | Latitude | Longitude | Depth (m) |
|---------------------------|----------|-----------|-----------|
| 1 (discharge boundary)    | 42°28.3' | 76°30.5'  | 5         |
| 2                         | 28.0'    | 30.8'     | 3         |
| 3                         | 28.2'    | 30.9'     | 4         |
| 4                         | 28.2'    | 31.4'     | 4         |
| 5                         | 28.5'    | 31.1'     | 6         |
| 6                         | 28.8'    | 31.3'     | 40        |
| 7 (discharge boundary)    | 28.0'    | 30.3'     | 3.5       |
| 8 (off Taughannock Pt.)   | 33.0'    | 35.0'     | 110       |
| thermistor "pile cluster" | 28.1'    | 31.0'     | 4         |
| LSC Intake                | 29.4'    | 31.8'     | 78        |
| P2                        | 28.20'   | 30.40'    | 4         |
| P4                        | 29.31'   | 31.41'    | 65        |
| S11                       | 29.60'   | 31.45'    | 72        |

## 2.4 Field Measurements

Secchi disc transparency was measured at all sites with a 20cm diameter black and white quadrant disc (Wetzel and Likens 1991).

## 2.5 Field Methods

Water samples were collected with a submersible pump, with depths marked on the hose. Care was taken that the sampling device was deployed vertically within the water column at the time of sampling. Samples for laboratory analysis were composite-type, formed from equal volumes of sub-samples collected at depths of 0, 2 and 4 meters from sites 5, 6, LSC Intake, and 8. Composite samples from sites 1, 2, 3, 4, and 7 were formed from equal volumes of sub-samples collected at depths of 0 and 2 meters. The composite-type samples avoid over-representation of the effects of temporary secondary stratification in monitored parameters. Sample bottles were stored in ice and transported to the laboratory on the same day of sampling. Chain of custody procedures were observed for all samples collected for laboratory analysis.

## 2.6 Laboratory Analyses, Protocols

Laboratory analyses for the selected parameters were conducted according to methods specified in table 2. Detection limits for these analyses are also included. Most of these laboratory analyses are "Standard Methods". Results below the limit of detection are reported as ½ the limit of detection. Chlorophyll-a concentrations were determined by spectrophotometric assay (USEPA 1997). Specifications adhered to for processing and preservation of samples, containers for samples, and maximum holding times before analyses, are summarized in table 3.

## 2.7 Quality Assurance/Control Program

A quality assurance/control (QA/QC) program was conducted to assure that ambient lake data collected met data quality objectives for precision, accuracy, representativeness, comparability, and completeness.

Table 2: Specification of laboratory methods for ambient water quality monitoring.

| Analyte                     | Method No.     | Reference    | Limit of Detection                    |
|-----------------------------|----------------|--------------|---------------------------------------|
| total phosphorus            | 4500-P         | APHA (1998)  | $0.8 \mu\text{g} \cdot \text{L}^{-1}$ |
| soluble reactive phosphorus | 4500-P         | APHA (1998)  | $0.5 \mu\text{g} \cdot \text{L}^{-1}$ |
| turbidity                   | 2130-B         | APHA (1998)  | 0.11 NTU                              |
| Chlorophyll-a               | 446.0 Rev. 1.2 | USEPA (1997) | $0.2 \mu\text{g} \cdot \text{L}^{-1}$ |

### 2.7.1 Field Program

Precision of sampling and sample handling was assessed by a program of field replicates. Samples for laboratory analyses were collected in triplicate at site 1 on each sampling day. Triplicate samples were also collected at one of the other sampling locations (sites 2-8 and the LSC intake) each monitoring trip. This station was rotated each sampling trip through the field season. Median values of triplicate samples collected from the lake, and triplicate samples of the LSC effluent, were used for analysis in this report. Secchi disc (SD) measurements were made in triplicate by two technicians at all sites throughout the field season, each reported SD value in this report is the mean of all six measurements at each site. Precision was generally high for the triplicate sampling/measurement program, as represented by the average values of the coefficient of variation for the 2009 program (table 4). Note that the CV as it is defined here (standard deviation/mean) is sensitive to low mean values. SRP values were very low in most samples collected in 2009 - approximately 65% of all samples collected during the season had less than 1  $\mu\text{g}/\text{Liter}$  SRP and in approximately 50% the SRP concentration was below the limit of detection.

### 2.7.2 Laboratory Program

The laboratory quality assurance/control program conducted was as specified by the National Environmental Laboratory Accreditation Program (NELAP 2003). NELAP methods were used to assure precision and accuracy, completeness and comparability (NELAP 2003). The program included analyses of reference samples, matrix spikes, blind proficiency samples, and duplicate analyses. Calibration and performance evaluation of analytical methods were consistent with NELAP guidelines; this includes control charts of reference samples, matrix spikes, and duplicate analyses.

Table 3: Summary of processing, preservation, storage containers and holding times for laboratory measurements; see codes below.

| Parameter                   | Processing | Preservation | Container | Holding Time |
|-----------------------------|------------|--------------|-----------|--------------|
| total phosphorus            | c          | a            | 1         | 1            |
| soluble reactive phosphorus | a          | b            | 1         | 2            |
| Chlorophyll-a               | b          | c            | 2         | 3            |
| turbidity                   | c          | b            | 2         | 2            |

processing:

- a - filter with 0.45 $\mu\text{m}$  cellulose acetate filter
- b - filter with 0.45 $\mu\text{m}$  cellulose nitrate filter
- c - whole water sample

preservation:

- a -  $\text{H}_2\text{SO}_4$  to pH < 2
- b - none
- c - store filter frozen until analysis

container:

- 1 - 250ml acid washed borosilicate boston round
- 2 - 4L polypropylene container

- holding time:  
 1 - 28 days  
 2 - 48 hours  
 3 - 21 days

Table 4: Precision for triplicate sampling/measurement program for key parameters for 2009, represented by the average coefficient of variation (CV = standard deviation/mean).

| Parameter     | Site 1 | Rotating Site* |
|---------------|--------|----------------|
| TP            | 0.04   | 0.09           |
| Chlorophyll-a | 0.07   | 0.16           |
| Turbidity     | 0.08   | 0.09           |
| SRP           | 0.15   | 0.13           |

\* average of Sites 2, 3, 4, 5, 6, 7, 8, LSC Intake

### 3 Results, 2009

The measurements made in the 2009 monitoring program are presented in two formats here: in tabular form (table 5) as selected summary statistics for each site, and as plots (figure 3 - figure 6) for selected sites and site groupings. Detailed listings of data are presented in Appendix A. LSC Discharge Monitoring Report Data are presented in Appendix B. The adopted summary statistics include the mean, the range of observations, and the coefficient of variation (CV = standard deviation/mean; table 5). The plots present time series for site 8 and an “average” of sites intended to represent overall conditions in the southern portion of the lake. This southern portion is designated as the “shelf”, as depths are less than 6m. The “shelf average” was calculated by taking the mean of values at sites 1 and 7, and then calculating the mean of this single value and the values observed at sites 3, 4 and 5, i.e.,

$$\text{"Shelf average"} = \frac{\frac{[site\ 1] + [site\ 7]}{2} + [site\ 3] + [site\ 4] + [site\ 5]}{4} \quad (1)$$

This is done to avoid over representation of the eastern part of the shelf (figure 1). Observations for site 6 are not included in this averaging because this location, while proximate, is in deeper water (>40m; i.e., off the shelf). Measurements at site 8 are presented separately in these plots to reflect lake-wide (or the main lake) conditions. The Secchi disc plot (figure 4b) presents observations for sites 6, LSC, and 8 which are deeper sites where Secchi disc observations were always less than the bottom depth. Time series for the LSC influent, the LSC effluent, and the shelf are presented separately (figure 5 and figure 6). Flow rates in Fall Creek (figure 3a) were measured by USGS gage 04234000.

Previous annual reports (UFI 1999 - 2006) documented occurrences of extremely high concentrations of forms of phosphorus (TP, TDP, and SRP) and nitrogen (TDN and T-NH<sub>3</sub>) at site 2. These occurrences are likely associated with the proximity of site 2 to the IAWWTP discharge (figure 1), which is enriched in these nutrients. Due to this localized condition site 2 was not included in the shelf average in those years. However, since 2006 differences between phosphorus concentrations at this site and the shelf average have become less pronounced, most likely due to upgrades to the IAWWTP phosphorus treatment capabilities in recent years (figure 7). Site 2 is omitted from shelf averages in this report in order maintain consistency with previous reports and allow easier interannual comparison.

Table 5: Summary of monitoring program results according to site, 2009.

| TP ( $\mu\text{g} \cdot \text{L}^{-1}$ ) |       |      |             |
|--|-------|------|-------------|
| Site                                     | Mean  | CV   | Range       |
| 1  | 15.95 | 0.29 | 9.5 - 23.6  |
| 2  | 25.72 | 0.44 | 14.1 - 58.7 |
| 3  | 17.99 | 0.38 | 10.8 - 36.3 |
| 4  | 14.17 | 0.46 | 7.6 - 29.6  |
| 5  | 12.91 | 0.21 | 8.9 - 17.5  |
| 6  | 12.51 | 0.18 | 8.9 - 17.2  |
| 7  | 23.52 | 0.44 | 11.4 - 44.7 |
| 8  | 11.63 | 0.21 | 8.5 - 17.6  |
| LSC                                      | 11.79 | 0.19 | 7.6 - 15.9  |

| Chlorophyll-a ( $\mu\text{g} \cdot \text{L}^{-1}$ ) |      |      |            |
|---|------|------|------------|
| Site  | Mean | CV   | Range      |
| 1   | 4.41 | 0.60 | 0.8 - 10.4 |
| 2   | 5.96 | 0.71 | 0.5 - 15.0 |
| 3   | 4.97 | 0.63 | 0.4 - 14.0 |
| 4   | 3.89 | 0.69 | 0.4 - 10.0 |
| 5   | 4.52 | 0.58 | 0.3 - 9.6  |
| 6   | 5.47 | 0.64 | 0.4 - 13.1 |
| 7   | 7.65 | 0.84 | 1.1 - 27.0 |
| 8   | 5.70 | 0.68 | 0.5 - 14.3 |
| LSC   | 5.57 | 0.71 | 0.4 - 12.4 |

| SRP ( $\mu\text{g} \cdot \text{L}^{-1}$ ) |      |      |           |
|---|------|------|-----------|
| Site                                      | Mean | CV   | Range     |
| 1   | 1.27 | 1.23 | 0.2 - 5.9 |
| 2   | 2.63 | 1.01 | 0.2 - 9.0 |
| 3   | 1.69 | 1.19 | 0.2 - 6.4 |
| 4   | 1.19 | 1.56 | 0.2 - 6.2 |
| 5   | 1.08 | 1.80 | 0.2 - 7.2 |
| 6   | 1.12 | 1.80 | 0.2 - 7.0 |
| 7   | 1.32 | 1.17 | 0.2 - 4.8 |
| 8   | 1.16 | 1.92 | 0.2 - 7.0 |
| LSC                                       | 1.12 | 1.92 | 0.2 - 7.2 |

| $T_n$ (NTU) |      |      |            |
|-------------|------|------|------------|
| Site        | Mean | CV   | Range      |
| 1           | 1.72 | 0.57 | 0.5 - 3.9  |
| 2           | 3.40 | 1.51 | 0.9 - 22.3 |
| 3           | 2.16 | 1.11 | 0.6 - 10.4 |
| 4           | 1.27 | 0.52 | 0.5 - 2.7  |
| 5           | 1.24 | 0.42 | 0.6 - 2.2  |
| 6           | 1.16 | 0.44 | 0.5 - 2.5  |
| 7           | 2.27 | 0.92 | 0.8 - 9.2  |
| 8           | 1.18 | 0.47 | 0.5 - 2.5  |
| LSC         | 1.16 | 0.66 | 0.5 - 3.4  |

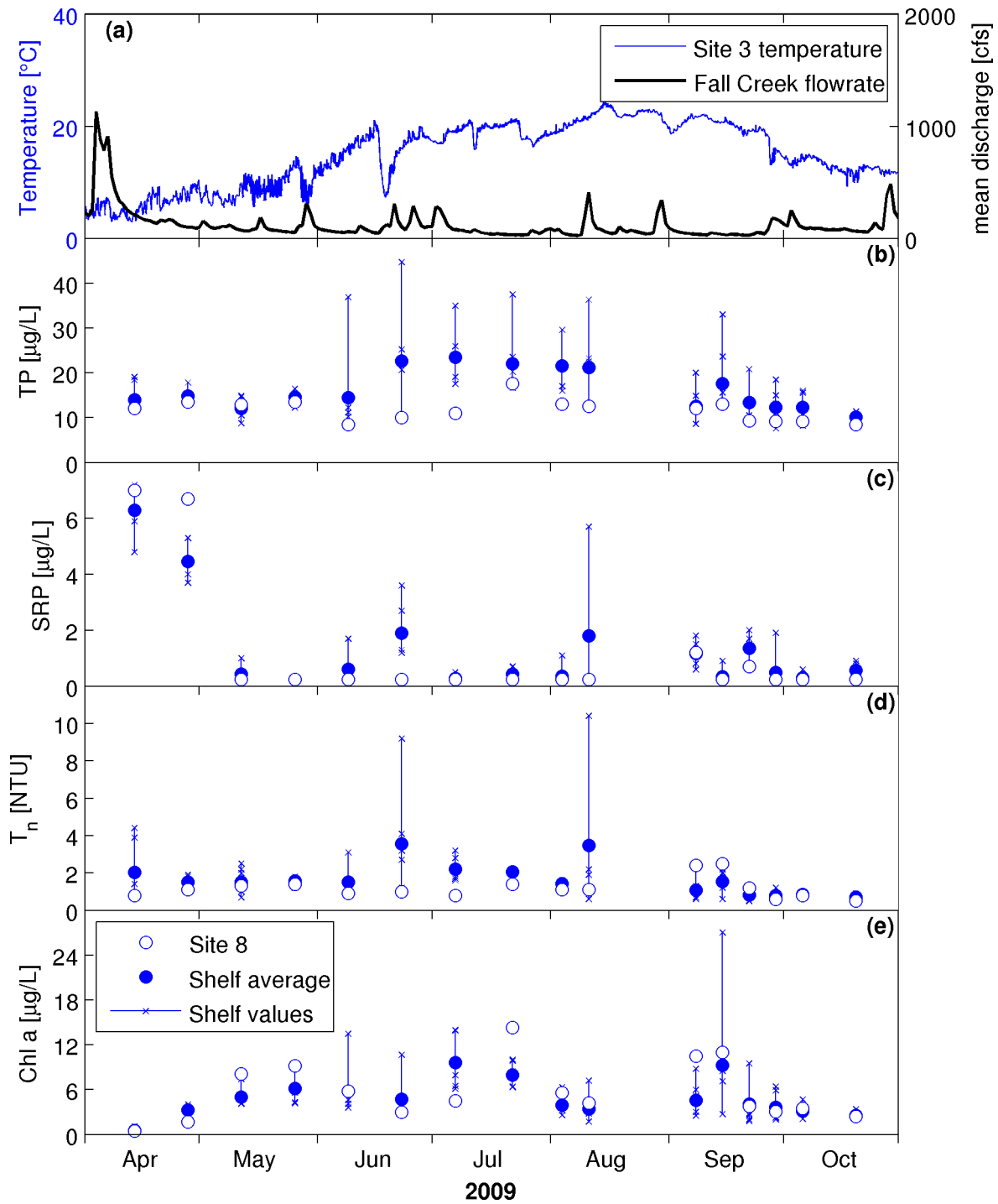


Figure 3: Time series of parameter values for Cayuga Lake for 2009: (a) Temperature at pile cluster (near site 3) and Fall Creek inflow record, (b) TP, (c) SRP, (d) Turbidity, (e) Chlorophyll-a. Values at site 8 are compared with the average value on the shelf. "x" symbols represent individual values measured at separate sites on the shelf.

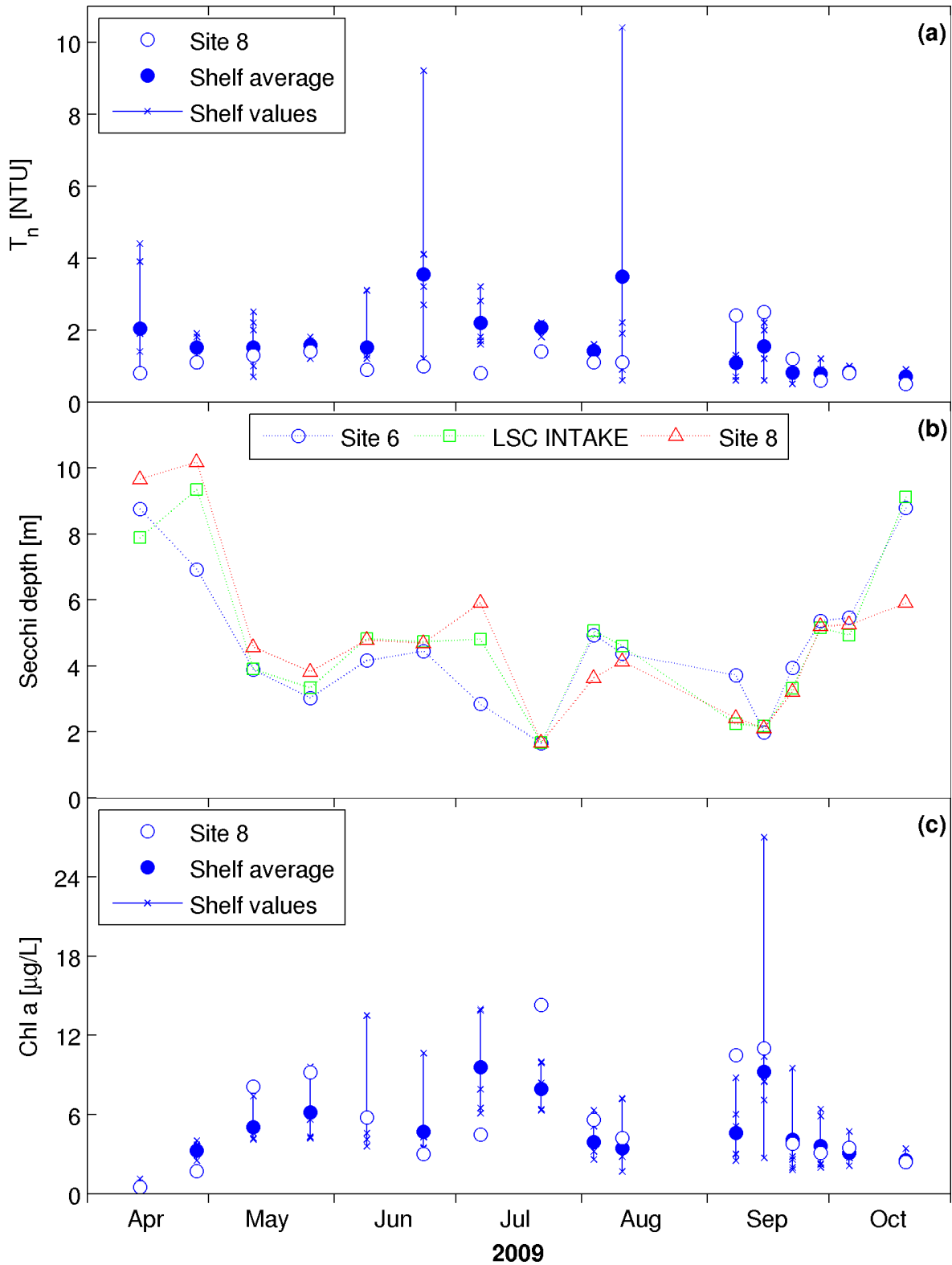


Figure 4: Time series of parameter values for Cayuga Lake for 2009: (a) Turbidity, (b) Secchi disc depth, and (c) Chlorophyll-a. Results for the “shelf” are averages; “x” symbols represent individual values measured at separate sites on the shelf.

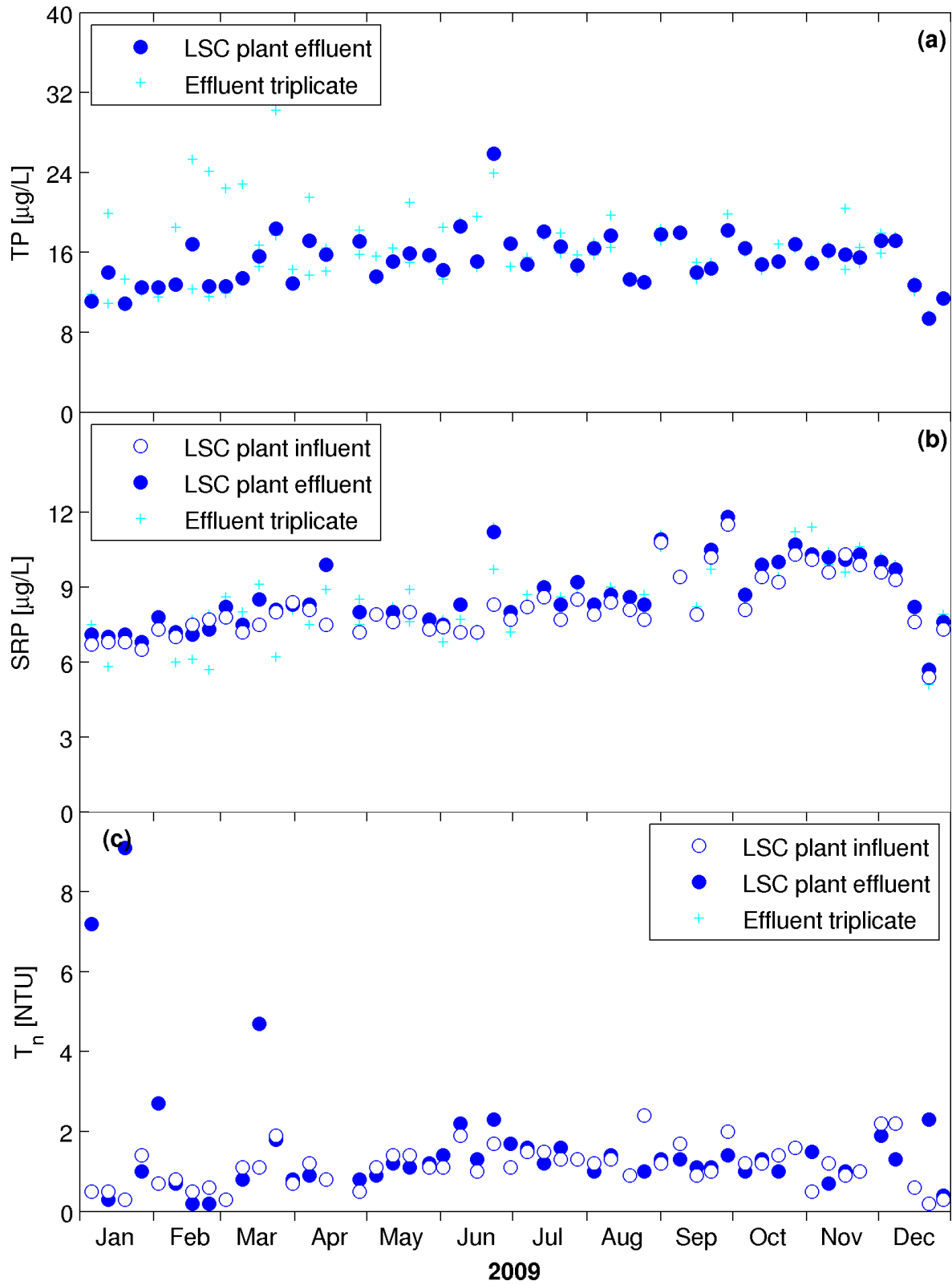


Figure 5: Time series of parameter values for the LSC influent and effluent for 2009: (a) TP (influent was not measured), (b) SRP, and (c)  $T_n$ . The median of triplicate samples was used as the representative value. “+” symbols represent values of additional triplicate samples.



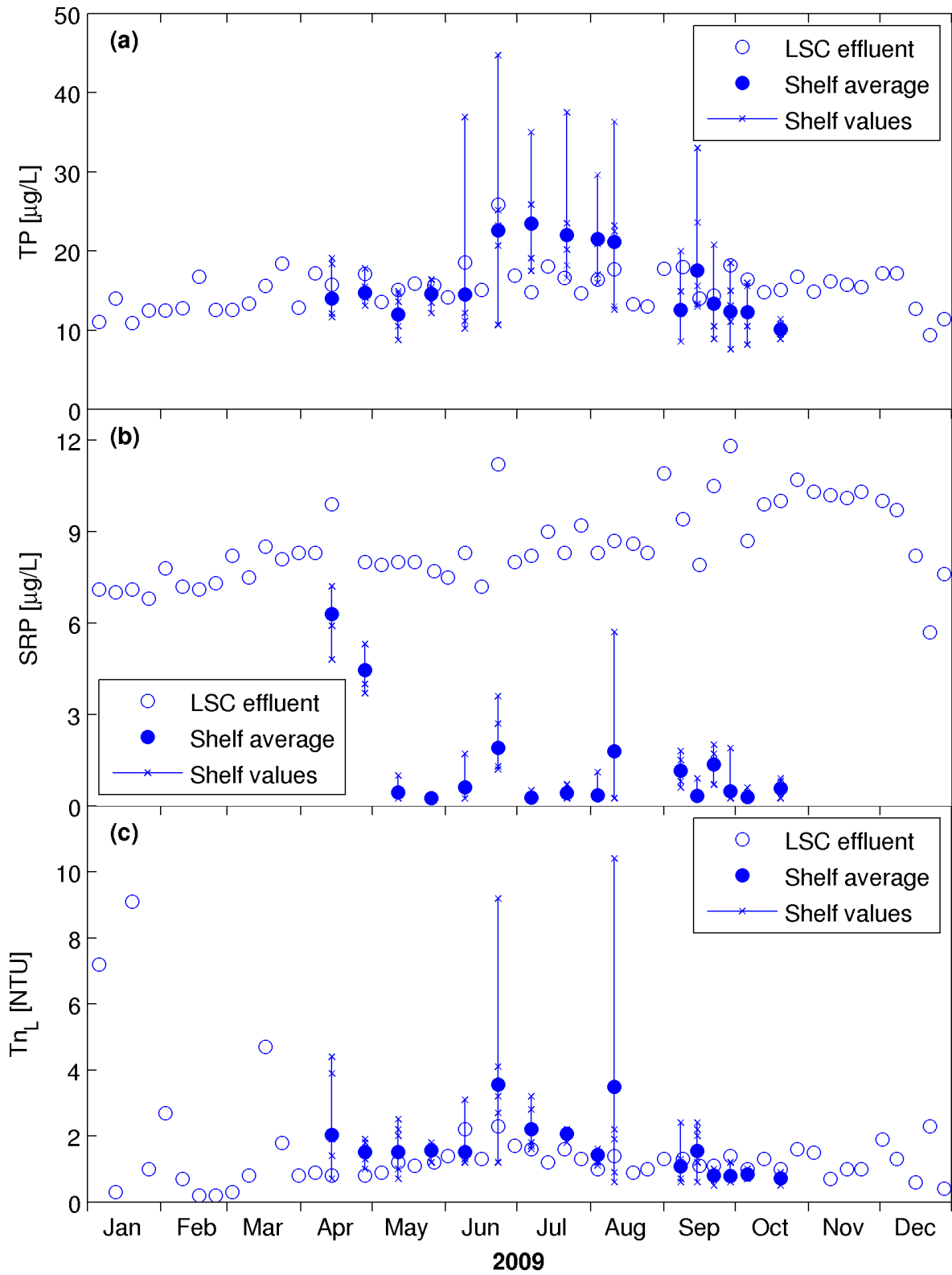


Figure 6: Time series of parameter values for the south shelf and the LSC effluent for 2009: (a) TP, (b) SRP, and (c) Turbidity. Results for the “shelf” are averages; “x” symbols represent individual values measured at separate sites on the shelf.

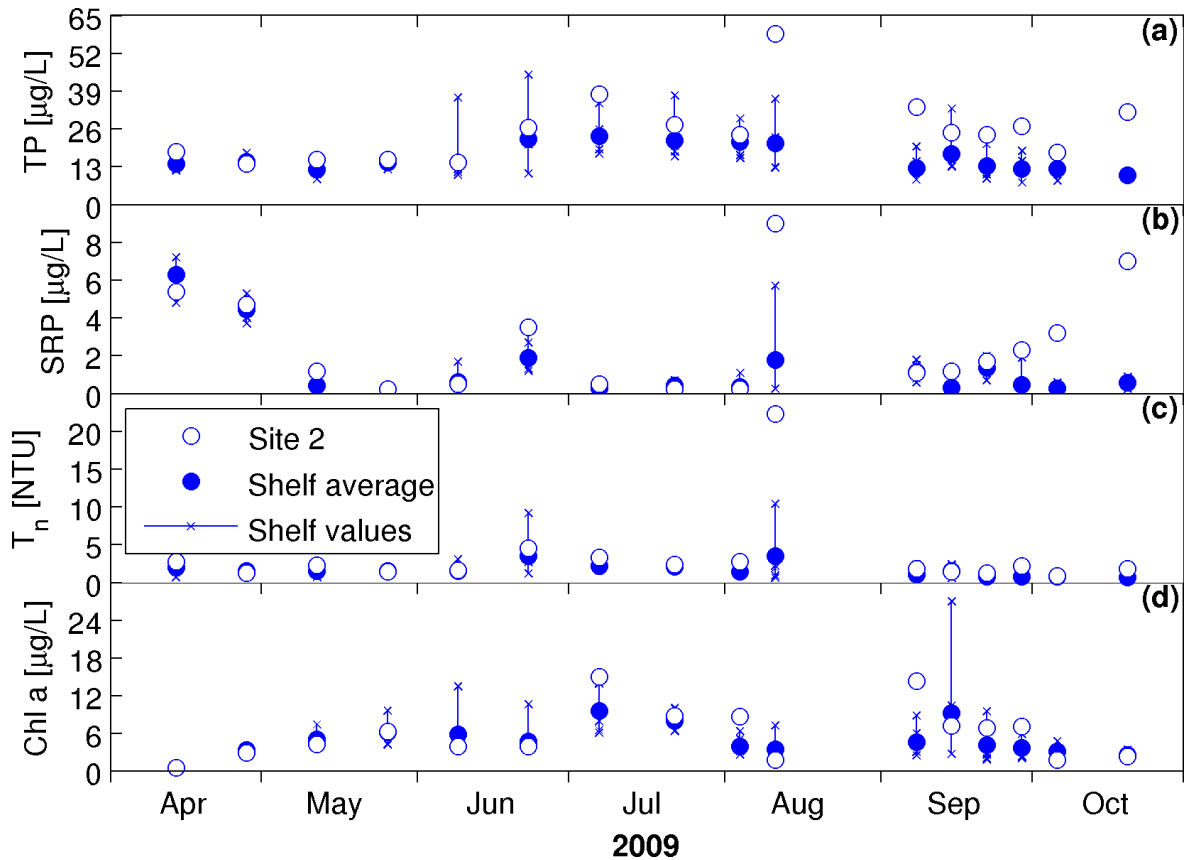


Figure 7: Comparison of observed parameters at site 2 and the shelf average.

## 4 Selected Topics

### 4.1 Measures of Clarity

Secchi disc is a systematically flawed measure of clarity for much of the southern portion of Cayuga Lake monitored in this program because of the southern shelf's shallow depth. Secchi disc transparency (SD) was observed to extend beyond the lake depth at sites 1, 2, 3, 4, 5 and 7 on several occasions during the 2009 study interval as was the case in previous years (see Appendix A). Additionally, on several dates the disc was obscured by rooted macrophytes before reaching the full transparency depth. Use of the population of SD measurements available (i.e., observations of SD < lake depth) results in systematic under-representation of clarity for each of these sites in cases where the true Secchi disc depth is deeper than the lake's bottom at the location measured. In addition, the SD measure is compromised as it approaches the bottom because reflection by the bottom rather than particles in the water can influence the measure. It may be prudent to consider an alternate representation of clarity that does not have these limitations. Turbidity ( $T_n$ ) represents a reasonable alternative, in systems where particles regulate clarity (Efler 1988).

### 4.2 Inputs of Phosphorus to the Southern End of Cayuga Lake

Phosphorus loading is an important driver of primary production in phosphorus limited lakes. Thus, it is valuable to consider the relative magnitudes of the various sources of phosphorus that enter the southern end of Cayuga Lake. Monthly average loading estimates are presented for the IAWWTP and CHWWTP wastewater treatment plants for the 2000 - 2009 interval (table 6, figure 8 and figure 9), based on flow and concentration data made available by these facilities. Discharge flows

are measured continuously at the facilities. Concentrations of total phosphorus (TP) in the effluents are measured twice per week at the IAWWTP and once per week at the CHWWTP. Estimates of the monthly loads are the product of monthly average flows and concentrations. Other estimation techniques may result in modest differences in these loads. Rather wide monthly and interannual differences in loading rates have been observed for both WWTPs (table 6) over the 2000 - 2009 interval. Major decreases in phosphorus loading from the IAWWTP were observed since 2006 as a result of the commencement of tertiary treatment for phosphorus.

This trend continued in 2009. Average total phosphorus loading from the IAWWTP during May - October 2009 was 35% lower than during 2007 - 2008 and more than 80% lower than in 2000 - 2005 (table 6). The TP permit limit is 37.8 kg per day for the IAWWTP and 7.6 kg per day for the CHWWTP. Average daily TP loading from the IAWWTP during May - October of 2009 was 2.3 kg/day. Phosphorus loading from CHWWTP during May - October 2009 was 2.6 kg/day, similar to the loading in 2007 - 2008. Loading levels from CHWWTP have also decreased over the study period: 2006 - 2009 loading levels were 40% less on average than loadings in 2000 - 2005 (table 6). The average phosphorus loading from CHWWTP since 2005 is less than half the loading rate in 2004, the year with the highest surface flows and highest loading from CHWWTP during the study period.

Monthly estimates of phosphorus loading from the tributaries were presented in the Draft Environmental Impact Statement (DEIS) for the LSC facility (Stearns and Wheeler 1997) for the combined inputs of Fall Creek and Cayuga Inlet over the May - October interval. These estimates are included for reference and comparison with other loading sources in table 6 and figure 8. The tributary loading estimates were developed for what was described in the DEIS as an "average hydrologic year", based on historic data for these two tributaries. The tributary phosphorus loads of table 6 and figure 8 were not for TP, but rather total soluble phosphorus (TSP, see Bouldin 1975 for analytical protocols). Therefore table 6 and figure 8 compare loading of different forms of phosphorus from the different sources. This is done because of the differences in composition of each of the sources (treated wastewater, surface runoff and hypolimnetic water). The comparison in this form was first made in the DEIS in an attempt to select the form of phosphorus believed to be most readily available for biological uptake in each loading source. The same comparison has been presented in previous annual reports and is presented here for consistency. It should be noted however that a comparison of total phosphorus (TP) from each source would result in much higher values from the tributaries and hence a substantially reduced relative loading from the LSC facility and the two WWTPs. Further, tributary loads vary substantially year-to-year, based on natural variations in runoff as well as changes in land-use practices. This interannual variation is not accounted for in the data presented in figure 8 and table 6.

Estimates of monthly TP loading to the shelf from the LSC facility and the relative contribution of this source during 2009 are presented in table 6, figure 8 and figure 9. Concentrations of TP were measured weekly in the LSC discharge. The estimates of the monthly loads are the product of the monthly average flows and concentrations that are reported monthly as part of the Discharge Monitoring Report (DMR; Appendix B). The average TP loading rate from LSC during the May - October period was 1.54 kg/day, similar to average levels in 2007 and 2006 and approximately half of the loading rate of 2.9 kg/day projected by the DEIS. The relative loading from LSC was approximately 9.2% of the total estimated load to the shelf (sum of measured TP from LSC, IAWWTP, CHWWTP, and estimated TSP from tributaries), higher than the 4.8% projected in the DEIS. The peak relative monthly contribution of the LSC facility to total phosphorus loading to the shelf in 2009 occurred in August (17.8%). In this month the loading from LSC was the highest for the year (2.2 kg/day) and loadings from other sources were relatively low, including loading from tributary flow. Tributary flow is the most substantial source of phosphorus to the shelf - the estimated average TP loading from the tributaries is more than double the sum of measured TP loads from LSC and the two WWTPs, and it is the source that shows the most monthly variability.

The higher relative loading rate of LSC in 2009 when compared to the projected relative loading in the DEIS is due to lower loadings from the WWTPs than predicted in the DEIS, not higher loadings from LSC. The loading estimates from the two WWTPs in the DEIS were based on the plants discharging at their maximum permitted TP concentrations and flow rates during the entire year. The actual loadings from both plants are substantially lower than this, averaging a total of 4.9 kg/day

during May - October 2009 out of the permitted 45.4 kg/day. Absolute phosphorus loading from LSC (as well as from the two WWTPs) was substantially lower in 2009 than predicted in the DEIS (1.5 kg/day discharged vs. 2.9 kg/day predicted in the DEIS).

Phosphorus loading rates for LSC in 2009 followed a similar trend as in previous years, with higher loading during the months with a higher cooling demand from the system, which requires increased flow rates. June to September mean loading was 1.85 kg/day, loading during the cooler months of May and October was lower, mean 0.95 kg/day (table 6, figure 8 and figure 9). From 2000 to 2004 phosphorus loading from the LSC facility to the shelf remained consistent at about 1.1 kg/day (May - October average) with a relative contribution of about 3.5% (table 6). In 2005 loading rates and the relative contributions from LSC increased (to 1.8 kg/day, 6.7%). Since 2006 the mean daily May - October loading has been approximately 1.5 kg/day. The relative increase since 2006 is due to changes in phosphorus concentrations in the lake's hypolimnion in those years (figure 10). The relative TP loading from LSC has slowly increased from 6.7% in 2005 to 9.2% in 2009. However this increase in relative loading is primarily due to decreased loads from the two WWTPs in that period, as the absolute loading from LSC remained stable.

Paired measurements of SRP and Tn for the LSC influent and effluent agreed very well for the vast majority of measurements (figure 5). The median difference between SRP pairs was 0.4 µg/Liter, and between Tn pairs was 0.3 NTU. This suggests the absence of substantial inputs within the facility. The median concentration of SRP in the LSC effluent in 2009 (April - October median of 8.3 µg/Liter) was similar to that observed in 2008 (8.6 µg/Liter) and lower than that observed in 2007 (10 µg/Liter), which was the year with the highest observed levels. In the preceding study years (2000 - 2006) median April - October effluent SRP concentrations ranged from 3.9 to 9.1 µg/Liter. Average levels of TP, SRP and Tn in the LSC effluent and on the shelf in 2009 are presented in figure 6 and table 7, and in a historical context going back to when the plant began operating in figure 10 and figure 11. TP and Tn levels measured in the LSC effluent in 2009 were close to those observed on the shelf. As in previous years, levels of TP, SRP and Tn varied widely over time and space on the shelf during 2009. However this variance was not as pronounced during 2009, a low surface flow year, as it has been during high flow years.

The increased TP loading to the shelf from the LSC effluent during 2005 - 2009 (table 6) is largely attributable to the increase in TP concentration in the effluent relative to 2000 - 2003 (while the increase in TP concentration in the LSC effluent appears to have begun in 2004, the peak increase in loading from the facility was observed in 2005; figure 10, figure 11 and table 6). Average TP concentration in the LSC effluent in the years 2004 - 2009 were 27% higher than in the years 2000 - 2003 (figure 10). Average SRP concentrations were 78% higher in 2004 - 2009 than in 2000 - 2003 (figure 10). However, after the steep rise in phosphorus concentration during 2004 - 2005, TP and SRP levels appear to have leveled off or to be declining slowly (figure 11). The increase in phosphorus loading from LSC since 2005 was more than offset by the reduction in loading from the IAWWTP following upgrades to the plant. Total phosphorus loading to shelf from point sources dropped more than 50% between 2005 - 2009 (figure 15c).

The increased phosphorus concentrations in the LSC effluent appear to be associated with a change in hypolimnetic water quality that has occurred beginning around 2004. Paired measurements of SRP and Tn in the LSC influent and effluent compared closely in 2009 (figure 5), as they have throughout operation of the facility (UFI, 2001, 2002, 2003, 2004, 2005, 2006, 2007; Cornell University, 2008, 2009). This supports the position that the increased effluent concentrations were associated with in-lake phenomena rather than a change within the LSC facility.

An unambiguous explanation for the apparent increases in phosphorus concentration in the lake's hypolimnion in 2004 and 2005 has not been identified. In large deep lakes such as Cayuga, changes in hypolimnetic water quality are expected to occur over long time scales, on the order of decades rather than years. Temporary increases in Tn and the particulate fraction of TP in bottom waters can be caused by plunging turbid inflows and internal waves or seiches. However, hypolimnetic SRP levels are generally considered to reflect lake-wide metabolism rather than local effects. Soluble reactive phosphorus is produced during microbial decomposition of organic matter and often accumulates in the hypolimnia of stratified lakes during summer. Increases in primary production (phytoplankton growth) and subsequent decomposition could cause increases in SRP levels. Longer

intervals of thermal stratification, increased hypolimnetic temperatures or depletion of dissolved oxygen could also cause higher concentrations of SRP in the bottom waters. The apparent increase in hypolimnetic SRP concentrations may represent a short-term anomaly rather than a long-term trend. It is worth noting that higher levels (>20 µg/Liter) of SRP have been observed in Cayuga Lake's hypolimnion in the past at depths near 100 meters (Oglesby, 1979).

Table 6: Estimates of monthly loads of phosphorus to the southern portion of Cayuga Lake over the 2000 to 2009 interval.

| Year        | IWWTP <sup>a</sup><br>TP, kg · d <sup>-1</sup> | CHWWTP <sup>a</sup><br>TP, kg · d <sup>-1</sup> | Tributaries <sup>b</sup><br>TSP, kg · d <sup>-1</sup> | LSC <sup>c</sup><br>TP, kg · d <sup>-1</sup> | Total<br>TP+TSP, kg · d <sup>-1</sup> | % LSC |
|-------------|--|---|---|--|---------------------------------------|-------|
| <b>2000</b> |  |   |   |  |                                       |       |
| May         | 24.1   | 3.5   | 29  | -  | 56.6                                  | -     |
| June        | 16.6   | 5.1   | 15.8  | -  | 37.5                                  | -     |
| July        | 13.7   | 3.4   | 8.8   | 1.4  | 27.3                                  | 5.10% |
| August      | 19.1   | 4.6   | 6   | 1  | 30.7                                  | 3.30% |
| September   | 18.5   | 4   | 7.5   | 0.9  | 30.9                                  | 2.90% |
| October     | 15.4   | 4.1   | 13.1  | 0.6  | 33.2                                  | 1.80% |
| <i>Mean</i> | 17.9   | 4.1   | 13.4  | 1  | 36.4                                  | 3.30% |
| <b>2001</b> |  |   |   |  |                                       |       |
| May         | 15.8   | 5.5   | 29  | 0.7  | 51                                    | 1.40% |
| June        | 11.2   | 4   | 15.8  | 1.1  | 32.1                                  | 3.40% |
| July        | 15.2   | 4.2   | 8.8   | 1  | 29.2                                  | 3.40% |
| August      | 15.2   | 7.1   | 6   | 1.4  | 29.7                                  | 4.70% |
| September   | 22   | 6.6   | 7.5   | 1  | 37.1                                  | 2.70% |
| October     | 16.4   | 2.8   | 13.1  | 0.7  | 33                                    | 2.10% |
| <i>Mean</i> | 16   | 5   | 13.4  | 1  | 35.4                                  | 3.00% |
| <b>2002</b> |  |   |   |  |                                       |       |
| May         | 12.4   | 4.4   | 29  | 0.6  | 46.4                                  | 1.30% |
| June        | 7.9  | 3.5   | 15.8  | 1  | 28.2                                  | 3.50% |
| July        | 10.4   | 3.8   | 8.8   | 1.8  | 24.8                                  | 7.30% |
| August      | 16.2   | 2   | 6   | 1.2  | 25.4                                  | 4.70% |
| September   | 11.4   | 2.8   | 7.5   | 1  | 22.7                                  | 4.40% |
| October     | 13.6   | 3.1   | 13.1  | 0.7  | 30.5                                  | 2.30% |
| <i>Mean</i> | 12   | 3.3   | 13.4  | 1.1  | 29.7                                  | 3.90% |
| <b>2003</b> |  |   |   |  |                                       |       |
| May         | 11   | 2.7   | 29  | 0.6  | 43.3                                  | 1.40% |
| June        | 6  | 7.8   | 15.8  | 1.2  | 30.8                                  | 3.90% |
| July        | 8.5  | 3.9   | 8.8   | 1.2  | 22.4                                  | 5.40% |
| August      | 13.8   | 3.1   | 6   | 1.2  | 24.1                                  | 5.00% |
| September   | 11.9   | 3.4   | 7.5   | 1.3  | 24.1                                  | 5.40% |
| October     | 14.5   | 5.3   | 13.1  | 0.9  | 33.8                                  | 2.70% |
| <i>Mean</i> | 11   | 4.4   | 13.4  | 1.1  | 29.8                                  | 3.90% |
| <b>2004</b> |  |   |   |  |                                       |       |
| May         | 11   | 6.6   | 29  | 1.3  | 47.9                                  | 2.70% |
| June        | 11   | 7.2   | 15.8  | 1.2  | 35.2                                  | 3.40% |
| July        | 11.7   | 7.1   | 8.8   | 0.9  | 28.5                                  | 3.20% |
| August      | 11.6   | 3.4   | 6   | 1.4  | 22.4                                  | 6.30% |
| September   | 11.5   | 7.9   | 7.5   | 1.1  | 28                                    | 3.90% |
| October     | 10.9   | 10.6  | 13.1  | 0.6  | 35.2                                  | 1.70% |
| <i>Mean</i> | 11.3   | 7.1   | 13.4  | 1.1  | 32.9                                  | 3.5%  |

continued on the next page

Table 6 (continued)

| Year        | IAWWTP <sup>a</sup><br>TP, $kg \cdot d^{-1}$ | CHWWTP <sup>a</sup><br>TP, $kg \cdot d^{-1}$ | Tributaries <sup>b</sup><br>TSP, $kg \cdot d^{-1}$ | LSC <sup>c</sup><br>TP, $kg \cdot d^{-1}$ | Total<br>TP+TSP, $kg \cdot d^{-1}$ | % LSC  |
|-------------|--|--|--|---|------------------------------------|--------|
| <b>2005</b> |  |  |  |   |                                    |        |
| May         | 11   | 3.7  | 29   | 2.1                                       | 45.8                               | 4.60%  |
| June        | 10.3   | 3.5  | 15.8   | 1.9                                       | 31.5                               | 6.00%  |
| July        | 9.4  | 2.8  | 8.8  | 2   | 23                                 | 8.70%  |
| August      | 9.4  | 2.9  | 6  | 2   | 20.3                               | 9.90%  |
| September   | 10.5   | 3.8  | 7.5  | 1.8                                       | 23.6                               | 7.60%  |
| October     | 10.4   | 5.1  | 13.1   | 1.1                                       | 29.7                               | 3.70%  |
| Mean        | 10.2   | 3.6  | 13.4   | 1.8                                       | 29                                 | 6.70%  |
| <b>2006</b> |  |  |  |   |                                    |        |
| May         | 7.2  | 1.5  | 29   | 1.1                                       | 38.8                               | 2.80%  |
| June        | 6.7  | 4.1  | 15.8   | 1.9                                       | 28.5                               | 6.70%  |
| July        | 7.2  | 3.9  | 8.8  | 2.2                                       | 22.1                               | 10.00% |
| August      | 3.7  | 3.7  | 6  | 2   | 15.4                               | 13.00% |
| September   | 4.2  | 2.5  | 7.5  | 1.4                                       | 15.6                               | 9.00%  |
| October     | 3.2  | 2.1  | 13.1   | 1   | 19.4                               | 5.20%  |
| Mean        | 5.4  | 3  | 13.4   | 1.6                                       | 23.3                               | 7.80%  |
| <b>2007</b> |  |  |  |   |                                    |        |
| May         | 3.3  | 0.9  | 29   | 1.1                                       | 34.3                               | 3.20%  |
| June        | 1.8  | 1.3  | 15.8   | 1.7                                       | 20.55                              | 8.30%  |
| July        | 4.3  | 2.5  | 8.8  | 1.7                                       | 17.3                               | 9.80%  |
| August      | 4.3  | 2.1  | 6  | 1.8                                       | 14.2                               | 12.70% |
| September   | 4.6  | 3.6  | 7.5  | 1.6                                       | 17.3                               | 9.20%  |
| October     | 3  | 4.5  | 13.1   | 1.3                                       | 21.9                               | 5.90%  |
| Mean        | 3.6  | 2.5  | 13.4   | 1.5                                       | 20.9                               | 8.20%  |
| <b>2008</b> |  |  |  |   |                                    |        |
| May         | 3.4  | 6.0  | 29   | 0.9                                       | 39.3                               | 2.3%   |
| June        | 3.8  | 3.5  | 15.8   | 2.0                                       | 25.1                               | 8.0%   |
| July        | 2.7  | 1.8  | 8.8  | 2.2                                       | 15.6                               | 14.4%  |
| August      | 5.3  | 3.2  | 6.0  | 1.6                                       | 16.0                               | 10.0%  |
| September   | 4.1  | 1.6  | 7.5  | 1.4                                       | 14.6                               | 9.7%   |
| October     | 2.8  | 1.4  | 13.1   | 0.9                                       | 17.7                               | 4.9%   |
| Mean        | 3.6  | 2.9  | 13.4   | 1.5                                       | 21.4                               | 8.2%   |
| <b>2009</b> |  |  |  |   |                                    |        |
| May         | 2.5  | 3.5  | 29.0   | 1.1                                       | 36.1                               | 2.9%   |
| June        | 1.5  | 2.8  | 15.8   | 1.8                                       | 21.8                               | 8.1%   |
| July        | 1.6  | 4.1  | 8.8  | 1.9                                       | 16.4                               | 11.5%  |
| August      | 2.0  | 2.0  | 6.0  | 2.2                                       | 12.1                               | 17.8%  |
| September   | 4.0  | 2.6  | 7.5  | 1.5                                       | 15.6                               | 9.9%   |
| October     | 2.3  | 0.8  | 13.1   | 0.8                                       | 17.0                               | 4.8%   |
| Mean        | 2.3  | 2.6  | 13.4   | 1.5                                       | 19.8                               | 9.2%   |

a total phosphorus; from IAWWTP and CHWWTP permit reporting

b total soluble phosphorus, for average hydrologic year; summation of Fall Creek and Cayuga Inlet; from Draft Environmental Impact Statement, LSC Cornell University, 1997

c total phosphorus; from facility permit reporting

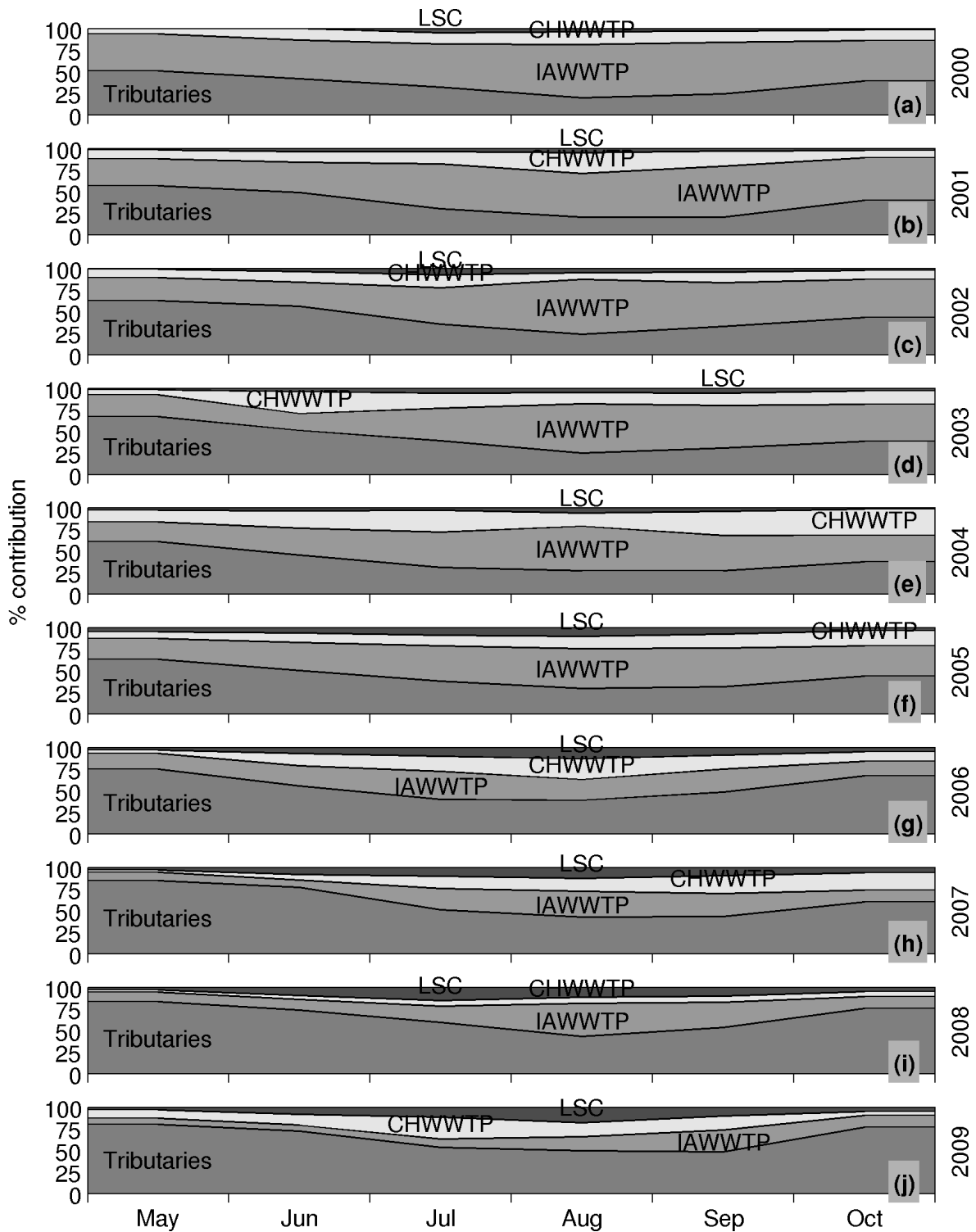


Figure 8: Time series of estimated relative monthly external loads of phosphorus to the southern portion of Cayuga Lake, partitioned according to source: (a) 2000, (b) 2001, (c) 2002, (d) 2003, (e) 2004, (f) 2005, (g) 2006, (h) 2007, (i) 2008 and (j) 2009. Loads are for total phosphorus with the exception of tributary loading, which is for total soluble phosphorus.

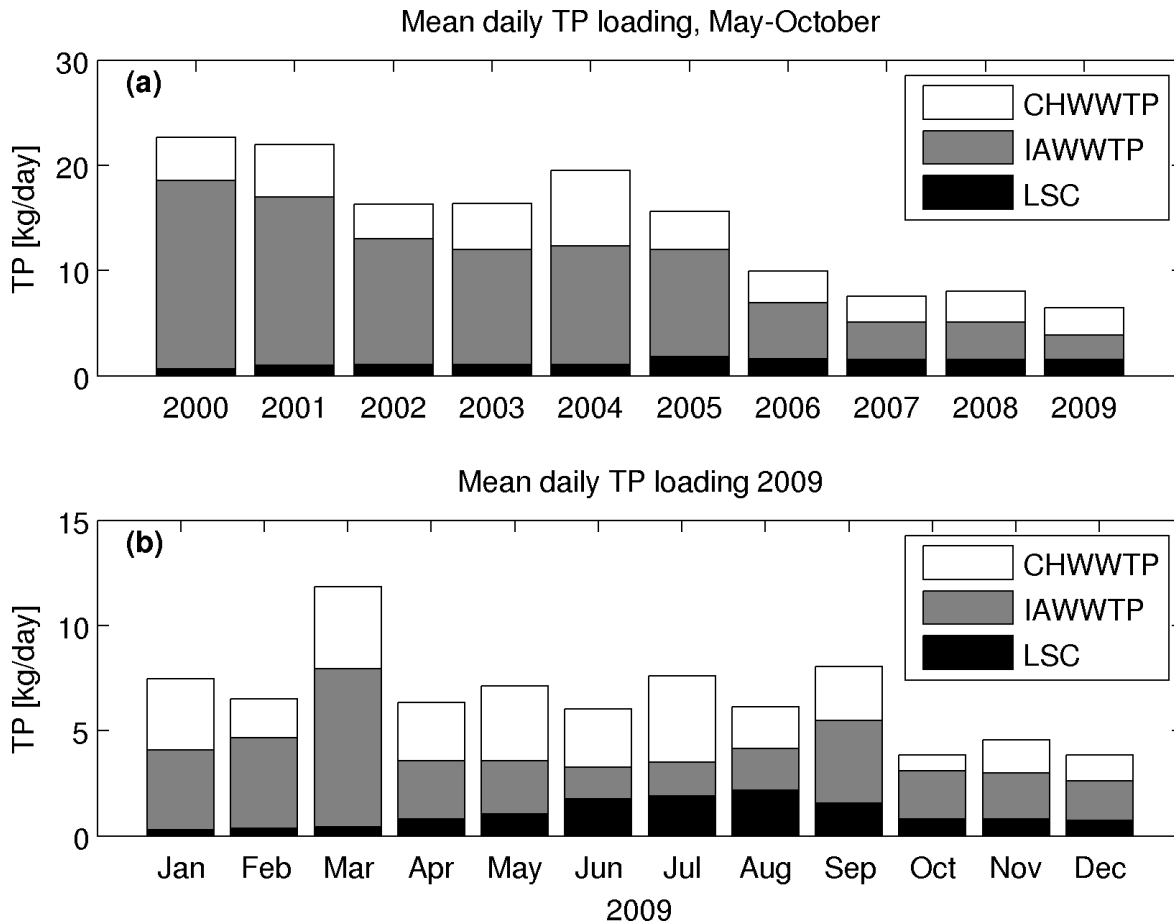


Figure 9: Trends in point source TP loading to the southern shelf: (a) mean daily loading in the May - October period, 2000 - 2009, (b) monthly mean loading in 2009.

Table 7: Average values and standard deviations for TP, SRP, and Tn in the LSC effluent and on the shelf. Averages determined from observations made during the April - October interval of 2009.

| Location               | TP ( $\mu\text{g} \cdot \text{L}^{-1}$ ) | SRP ( $\mu\text{g} \cdot \text{L}^{-1}$ ) | Tn (NTU) |
|------------------------|--|---|----------|
| LSC effluent (n = 29)  | 16.2±2.4                                 | 8.9±1.2                                   | 1.3±0.4  |
| Shelf average (n = 16) | 16.9±4.2                                 | 1.4±1.7                                   | 1.8±1.0  |



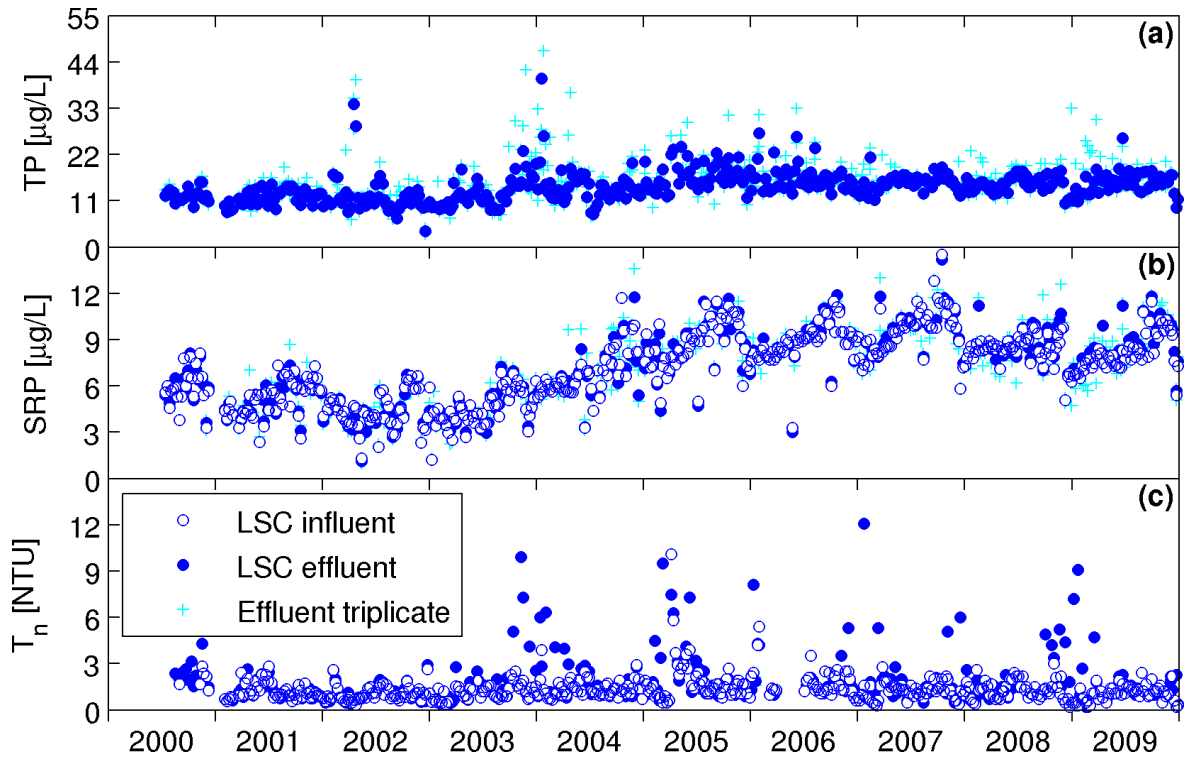


Figure 10: Time series of concentrations measured weekly in the LSC effluent for the 2000 - 2009 interval: (a) total phosphorus, (b) soluble reactive phosphorus, and (c) turbidity. The median of triplicate samples was used as the representative value. "+" symbols represent additional triplicate sample values.

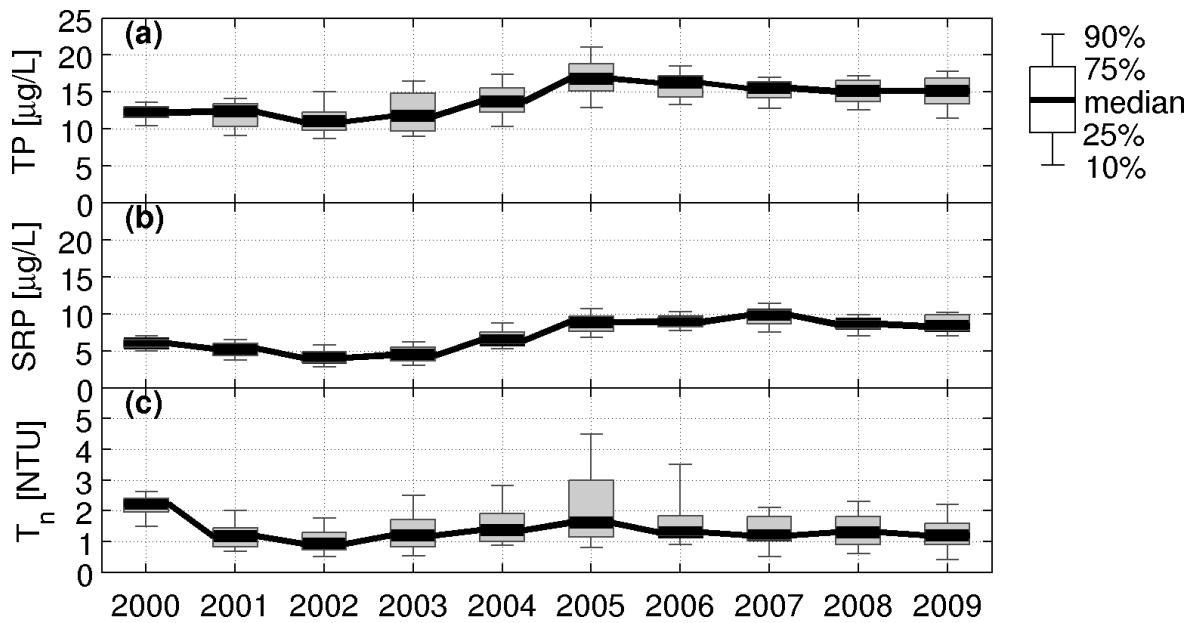


Figure 11: Annual concentrations measured in the LSC effluent for the 2000 - 2009 interval: (a) total phosphorus, (b) soluble reactive phosphorus, and (c) turbidity.

### 4.3 Variations in Runoff and Wind Speed

Meteorological conditions and coupled features of runoff have important effects on lake ecosystems. These conditions are not subject to management, but in fact demonstrate wide variations in factors that can strongly modify measures of water quality (e.g., Lam et al. 1987, Auer and Effler 1989, Rueda and Cowen 2005). Thus the effects of natural variations in these conditions can be mistaken for anthropogenic impacts (e.g., pollution). The setting of the southern end of the lake, including the localized entry of tributary flows and its shallow depth, make it particularly challenging to identify conditions influencing measurements of total phosphorus (TP), Secchi disc transparency (SD), and turbidity (Tn). This challenge is further increased by the lack of a comprehensive data collection effort that measures tributary inputs of sediment or various forms of phosphorus. Therefore, potential tributary contributions of non-phytoplankton particles that would diminish SD values and increase in-lake Tn and TP concentrations are not accounted for and could mistakenly be misinterpreted as reflecting increases in lake phytoplankton concentrations. These influxes may be associated with external loads carried by the tributaries, particularly during runoff events, and internal loads associated with sediment resuspension or driven by wind events (e.g., Bloesch 1995). Thus, it is prudent to consider natural variations in tributary flow and wind speed in evaluating seasonal and interannual differences in these parameters for the southern end of Cayuga Lake. Interannual variations in runoff and wind speed are discussed in section 4.7 (Interannual Comparisons) and illustrated in figure 13 and figure 15.

Runoff and wind conditions for the study period of 2009 are represented here by daily average flows measured in Fall Creek by the USGS, and daily average wind speed, measured by Cornell University at the Game Farm Road Weather Station (GFR; figure 13). Only the component of the wind along the lake's long axis is presented as this is the component most important to physical processes such as generation of waves, internal seiches and upwelling events. These conditions are placed in a historic perspective by comparison to available records. Fall Creek has been reported to be a good indicator of lake-wide runoff conditions (Effler et al. 1989). The record for Fall Creek is quite long, going back to 1925. The wind database contains measurements since 1987. Daily average flow measurements for Fall Creek and wind speed for 2009 are compared to time-series of daily median values for the available records for the monitoring period (figure 13).

Fall Creek flows during 2009 were low compared to the historic record. The total flow volume through Fall Creek during the April - October period of 2009 was the third lowest of the years 1998 - 2009 and the second lowest since the LSC plant began operating in 2000. Daily flow rates were below the historic median flow rates for most of the season, and high flow events were infrequent and characterized by lower peak flows relative to previous years.

### 4.4 Limitations in Measures of Trophic State on the Shelf

Recurring scientific evidence, provided by the findings of eleven consecutive study years (Upstate Freshwater Institute 1999, 2000, 2001, 2002, 2003, 2004, 2005, 2006, 2007; Cornell University 2008, 2009) has demonstrated that Tn and TP are systematically flawed indicators of the trophic state on the shelf. In particular, substantial variations and increases in both parameters on the south shelf appear to be uncoupled at times from patterns and magnitudes of phytoplankton biomass. These features appear to be associated with greater contributions of non-phytoplankton particles (e.g., clay and silt) to the measures of TP and Tn on the south shelf. Four lines of circumstantial evidence supporting this position have been presented in previous annual reports, based on observations from the 1998 - 2006 study years (Upstate Freshwater Institute 1999, 2000, 2001, 2002, 2003, 2004, 2005, 2006, 2007):

1. High Tn values were observed for the shelf and site 8 following major runoff events. This suggests greater contributions of non-phytoplankton particles to the measurements of Tn following runoff events.
2. Elevated Tn values were reported for the 1999, 2000 and 2002 study years (Upstate Freshwater Institute 2000, 2001, 2003) at the deep water sites during "whiting" events in late July and August. These increases in Tn were driven largely by increases in Tc (calcium carbonate turbidity).

3. The ratio of particulate phosphorus (PP) to Chlorophyll-a was often substantially higher on the south shelf than at the deep stations, suggesting greater contributions of non-phytoplankton particles to the PP pool at the southern end of the lake. Further, unlike the deep sites, the ratio was often above the range of values commonly associated with phytoplankton biomass (e.g., Bowie et al. 1985).
4. Application of previously reported literature values of light scattering (e.g., Tn) per unit chlorophyll (e.g., Weidemann and Bannister 1986) to the Chlorophyll-a observations indicate that non-phytoplankton particles made greater contributions to Tn on the shelf than in deep waters. Non-phytoplankton particles were found to be responsible for the high Tn levels on the shelf and at site 8 following the major runoff events.

Additional measurements were made in 1999 and 2000, beyond the scope of the LSC monitoring program, to more comprehensively resolve the constituents/processes regulating the SD and TP measurements (Effler et al. 2002). Effler et al. (2002) demonstrated that inorganic particles (primarily clay minerals, quartz and calcium carbonate), rather than phytoplankton, are the primary regulators of clarity, represent most of the PP, and are responsible for the higher Tn, lower SD, and higher TP on the shelf compared to deeper portions of the lake.

#### **4.5 Continuation of the Long-Term Record of Water Quality/Eutrophication Indicators**

Systematic changes in water quality can only be quantitatively documented if reliable measurements are available for historic conditions. Concentrations of TP and Chlorophyll-a have been measured irregularly in the open waters of Cayuga Lake over the last several decades. Measurements made over the late 1960s to mid 1970s were made mostly as part of research conducted by Cornell University staff (table 8 and table 9). These data were collected mostly at deep water locations. No comprehensive data sets were found to represent conditions in the 1980s. Measurements were continued in the 1994 - 1996 interval as part of studies conducted to support preparation of the Draft Environmental Impact Statement for the LSC facility (Stearns and Wheler 1997). These included observations for both the shelf and deeper locations (table 8 and table 9). The record continues to be updated annually, for both a deep water location and the shelf, based on monitoring sponsored by Cornell University related to operation of the LSC facility (1998 - 2009, documented here).

Summer (June - August) average TP and Chlorophyll-a concentrations are presented for the lake's upper waters in table 8 and table 9. Higher TP concentrations were observed on the shelf compared to deeper portions of the lake in all years monitored. Summer average TP concentrations for 2009 were within the range of interannual variability observed since 1998 for both the deep water site and the shelf. Summer average Chlorophyll-a concentrations were higher in 2006 - 2009 than in preceding years both on the shelf and at the deep water sites, although not as high as some observations made in the 1970s. Mean Chlorophyll-a concentrations observed in 2009 were lower than those observed in 2006 - 2008. Chlorophyll-a concentrations were distinctly higher on the shelf than at deep water sites from 1994 to 1996. However, it should be noted that data for those years were collected as part of the DEIS study at different locations and using different methodology than in the monitoring program that began in 1998. In the years since 1998 observed differences between Chlorophyll-a on the shelf and the deep water locations have not been as large, and in different years Chlorophyll-a was higher on the shelf or in deeper water. Summer average concentrations of TP and Chlorophyll-a for deep water sites are generally consistent with a mesotrophic trophic state classification (i.e., intermediate level of primary productivity; e.g., Dobson et al. 1974, Vollenweider 1975, Chapra and Dobson 1981).

Slight differences exist between the data presented in table 8 and table 9 and those presented in figure 15. Table 8 and table 9 present each year as a single value, to facilitate simple interannual comparison. Values in the two tables were calculated by first calculating the shelf averaged value of TP or Chlorophyll-a concentration for each sampling date, and then averaging those numbers to a single value for the season. Figure 15 presents the range of variability of the different metrics, both temporally and spatially within the shelf. Data presented in this figure are not averaged, but are

statistics of individual observations at the various sites. Further, table 8 and table 9 present data from June - September, the peak productive months, while figure 15 presents May - October data.

Table 8: Summer (June - August) average total phosphorus (TP) concentrations for the upper waters of Cayuga Lake. June - September averages are included in parentheses for the 1998 - 2009 study years.

| Year                | Total Phosphorus ( $\mu\text{g} \cdot \text{L}^{-1}$ ) |                | Source                  |
|---------------------|--|----------------|-------------------------|
|                     | Deep-Water Location(s)                                 | Southern Shelf |                         |
| 1968 <sup>Δ</sup>   | 20.2 (n = 19)  | -              | Peterson 1971           |
| 1969 <sup>Δ</sup>   | 15.3 (n = 22)  | -              | Peterson 1971           |
| 1970 <sup>Δ</sup>   | 14.0 (n = 32)  | -              | Peterson 1971           |
| 1972 <sup>x</sup>   | 18.8 (n = 22)  | -              | USEPA 1974              |
| 1973 <sup>Δ</sup>   | 14.5 (n = 88)  | -              | Godfrey 1973            |
| 1994 <sup>*,⊕</sup> | 21.7   | 30.8           | Stearns and Wheler 1997 |
| 1995 <sup>*,⊗</sup> | 16.5   | 23.7           | Stearns and Wheler 1997 |
| 1996 <sup>*,⊗</sup> | 12.4   | 21.7           | Stearns and Wheler 1997 |
| 1998 <sup>+</sup>   | 14.7 (14.7)  | 26.5 (24.7)    | UFI 1999                |
| 1999 <sup>++</sup>  | 10.6 (9.8)   | 15.9 (14.5)    | UFI 2000                |
| 2000 <sup>++</sup>  | 11.9 (11.6)  | 19.4 (18.7)    | UFI 2001                |
| 2001 <sup>++</sup>  | 14.0 (14.2)  | 21.4 (20.4)    | UFI 2002                |
| 2002 <sup>++</sup>  | 14.7 (14.1)  | 22.1 (22.2)    | UFI 2003                |
| 2003 <sup>++</sup>  | 10.2 (10.4)  | 13.6 (14.4)    | UFI 2004                |
| 2004 <sup>++</sup>  | 15.8 (15.3)  | 21.5 (24.9)    | UFI 2005                |
| 2005 <sup>++</sup>  | 12.8 (12.6)  | 17.3 (17.8)    | UFI 2006                |
| 2006 <sup>++</sup>  | 16.2 (15.2)  | 30.1 (26.3)    | UFI 2007                |
| 2007 <sup>++</sup>  | 14.3 (13.4)  | 24.7 (21.7)    | Cornell University 2008 |
| 2008 <sup>++</sup>  | 12.9 (12.2)  | 19.6 (17.9)    | Cornell University 2009 |
| 2009 <sup>++</sup>  | 12.1 (11.6)  | 20.9 (18.1)    | This report             |

Δ Myers Point

x one sample, multiple sites and depths

\* averages of 0 m observations

+ July - August, 0 - 4 m composite samples

++ 0 - 4 m composite samples, site 8 and shelf average respectively

⊕ site in 62 m of water, south of Myers Point, surface samples

⊗ site in 70 m of water, south of Myers Point, surface samples

Note: Shelf values reported here are weighted spatial averages (see section 3). This weighted average was not used in table 8 of the 2007 report for that year's data only. The 2007 entry has been adjusted in this document for consistency with the other years.

Table 9: Summer (June - August) average Chlorophyll-a concentrations for the upper waters of Cayuga Lake. June - September averages are included in parentheses for the 1998 - 2009 study years.

| Year               | Chlorophyll-a ( $\mu\text{g} \cdot \text{L}^{-1}$ ) |                | Source                  |
|--------------------|---|----------------|-------------------------|
|                    | Deep-Water Location(s)                              | Southern Shelf |                         |
| 1966*              | 2.8   | -              | Hamilton 1969           |
| 1968**             | 4.3   | -              | Wright 1969             |
| 1968 - 1970        | 4.8   | -              | Oglesby 1978            |
| 1970               | 3.7   | -              | Trautmann et al. 1982   |
| 1972               | 10.3  | -              | Oglesby 1978            |
| 1973               | 8.2   | -              | Trautmann et al. 1982   |
| 1974               | 8.1   | -              | Trautmann et al. 1982   |
| 1977               | 8.6   | -              | Trautmann et al. 1982   |
| 1978               | 6.5   | -              | Trautmann et al. 1982   |
| 1994               | 5.5   | 8.9            | Stearns and Wheler 1997 |
| 1995               | 4.8   | 6.8            | Stearns and Wheler 1997 |
| 1996               | 3.4   | 7.6            | Stearns and Wheler 1997 |
| 1998 <sup>+</sup>  | 4.8 (4.8)   | 5.7 (5.2)      | UFI 1999                |
| 1999 <sup>++</sup> | 4.7 (4.6)   | 4.4 (4.2)      | UFI 2000                |
| 2000 <sup>++</sup> | 4.8 (4.7)   | 5.5 (5.4)      | UFI 2001                |
| 2001 <sup>++</sup> | 4.7 (4.5)   | 4.6 (4.4)      | UFI 2002                |
| 2002 <sup>++</sup> | 5.1 (5.2)   | 4.8 (5.6)      | UFI 2003                |
| 2003 <sup>++</sup> | 5.6 (5.6)   | 6.0 (5.9)      | UFI 2004                |
| 2004 <sup>++</sup> | 4.7 (5.3)   | 6.5 (6.9)      | UFI 2005                |
| 2005 <sup>++</sup> | 4.9 (4.7)   | 4.8 (4.9)      | UFI 2006                |
| 2006 <sup>++</sup> | 7.7 (7.8)   | 7.2 (7.2)      | UFI 2007                |
| 2007 <sup>++</sup> | 7.2 (6.6)   | 6.1 (5.4)      | Cornell University 2008 |
| 2008 <sup>++</sup> | 7.6 (6.9)   | 8.0 (6.8)      | Cornell University 2009 |
| 2009 <sup>++</sup> | 6.2 (6.6)   | 5.9 (5.7)      | This report             |

\* Hamilton 1969, 15 dates

\*\* Wright 1969, 4 dates - 7 to 9 longitudinal sites

+ July - August, 0 - 4 m composite samples

++ 0 - 4 m composite samples, site 8 and shelf average respectively

Note: Shelf values reported here are weighted spatial averages (see section 3). This weighted average was not used in table 9 of the 2007 report for that year's data only. The 2007 entry has been adjusted in this document for consistency with the other years.

#### 4.6 Comparison to Other Finger Lakes: Chlorophyll-a

A synoptic survey of all eleven Finger Lakes was conducted in the late 1990's (NYSDEC, with collaboration of the Upstate Freshwater Institute) that support comparison of selected conditions among these lakes. This type of comparative study is important for understanding Cayuga Lake in the context of similar systems nearby. The following section is included to provide some context although data presented in this section are not as current as data presented elsewhere in this report. Annual average Chlorophyll-a values have been variable in Cayuga Lake, and similar changes have occurred in other lakes in the region as well (Halfman & Franklin 2008).

Chlorophyll-a data (Callinan 2001) collected from the synoptic surveys are reviewed here, as this may be the most trophic state representative indicator from available measurements. Samples (n=15 to 16) were collected in these surveys over the spring to early fall interval during 1996 through 1999. The sample site for Cayuga Lake for this program coincides approximately with site 8 of the LSC monitoring program (figure 2).

Although no universal agreement is available regarding the concentrations of Chlorophyll-a that demarcate trophic states, a summer average value of 2.0 µg/Liter has been used as the demarcation between oligotrophy and mesotrophy (Dobson et al. 1974, National Academy of Science 1972). There is less agreement for the demarcation between mesotrophy and eutrophy; the boundary summer average value reported from different sources (e.g., National Academy of Science 1972, Dobson et al. 1974, Great Lakes Group 1976) ranges from 8 to 12 µg/Liter.

The average Chlorophyll-a concentration for Cayuga Lake during the synoptic survey (3.5 µg/Liter) is compared to the values measured in the other ten Finger Lakes in figure 12. These data support Cayuga Lake's classification as mesotrophic. In 1996 - 1999 six of the lakes had average concentrations lower than observed for Cayuga Lake. Two of the lakes, Canandaigua and Skaneateles, had concentrations consistent with oligotrophy, while two (Conesus and Honeoye) bordered on eutrophy. However, the higher Chlorophyll-a concentrations observed in Cayuga Lake in 2006 - 2008 approached the upper bounds of mesotrophy.

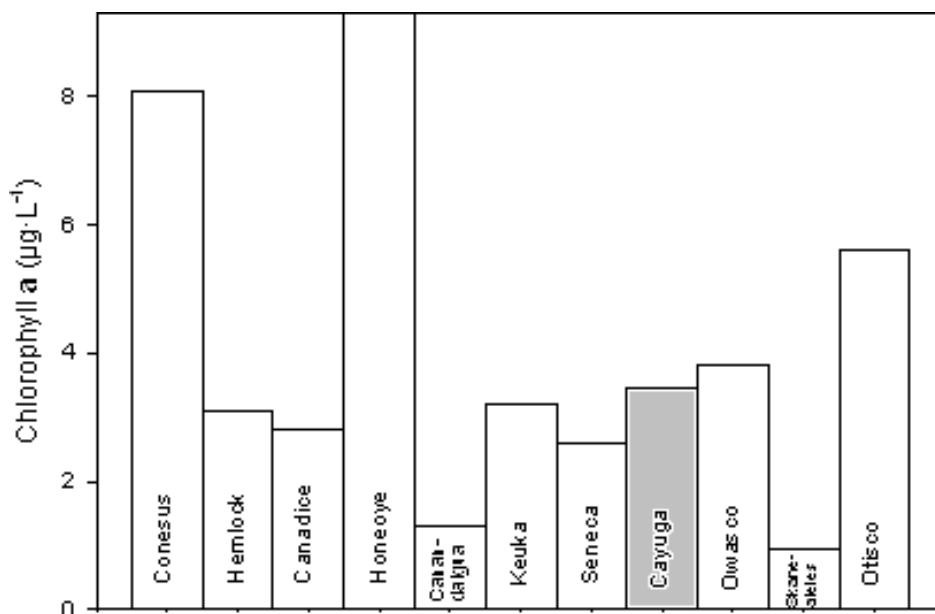


Figure 12: Comparison of average Chlorophyll-a concentrations for the spring-early fall interval for the eleven Finger Lakes, based on samples (n=15 to 16) collected over the 1996 through 1999 interval (data from Callinan 2001).

#### 4.7 Interannual Comparisons

Interannual differences in water quality can occur as a result of both human interventions and natural variations in climate. Because of its location and shallow depth, water quality on the south shelf can vary substantially from year to year as a result of changes in forcing conditions. Conditions for runoff, wind speed and summed TP loading from the IAWWTP, CHWWTP and the LSC facility for 2009 are compared here to the previous study years (figure 13). When compared to flow conditions of the preceding years, the Fall Creek hydrograph for 2009 shows that this was a relatively dry year. After a period of high flow (peaking at 1130 cfs) during spring melt in early April there were two events during the sampling season reaching daily mean flows of approximately 400 cfs and 500 cfs, and five more with daily flow rates around 350 cfs. Average daily flow in Fall Creek was below 200 cfs 87% of the time. In previous years runoff events with flow rates of 2,000 cfs or higher were not uncommon (UFI 1999 - 2007).

Daily average wind speeds along the lake's long axis are presented in figure 13b for the 1998 - 2009 study periods. Wind patterns were within the range of values measured in previous years. Sustained winds from the south for a period of several days can lead to upwelling events as is evident in the

temperature record taken by the deployed thermistors (figure 3a). Upwelling events result in the advection of hypolimnetic waters onto the southern shelf and increased vertical mixing in the water column as well as altering the residence time of nutrient loads on the shelf.

Estimates of monthly average total phosphorus (TP) loads to the shelf from point sources in 2009 are compared to the 2000 - 2008 period in figure 13c. Monthly estimates of TP loads for 2009 were consistently among the lowest values observed over all study years. TP loading to the shelf has decreased substantially since the establishment of tertiary treatment for phosphorus at the IAWWTP.

Time series of TP, Chlorophyll-a, and Tn are presented for the April - October interval in the context of historical values measured since 1998 (figure 14, note that data were not collected during the April - June interval of 1998). Plotted values are intended to represent conditions on the shelf (shelf average - mean of values at sites 3, 4, 5 and the mean of sites 1 and 7; see equation 1 on page 8). TP levels recorded on the shelf in 2009 were on the lower end of the historic range during April and May, and within the range of variability of past observations on all other sampling days (figure 14a).

The seasonal dynamics of Chlorophyll-a concentrations on the shelf in 2009 were generally typical of the previous study years (figure 14b). In general, Chlorophyll-a concentrations have been lowest during spring and fall and highest during mid-summer. Turbidity values measured in 2009 were in general lower than values observed in previous study years (figure 14c). Historically, high turbidity values were observed on sampling dates that coincided with major runoff events (e.g., early July 1998, early April 2000, mid-June 2000, early April 2001, and late June 2001). In contrast, in low flow years high turbidity values were not observed (e.g., in 1999, an extremely low runoff year, peak turbidity observations were < 5 NTU). 2009 was characterized by relatively low surface flow, and the turbidity record was similar to other years with low surface flow (e.g., 1999, 2001, 2005, 2007, 2008; figure 15).

The temporally detailed data presented in figure 13 and figure 14 are summarized in figure 15 as box plots for each of the study years. The dimensions of the boxes are identified in the key located to the right of figure 15a. Fall Creek flows were highest in 2004; runoff was also relatively high in 2000, 2002, 2003 and 2006 (figure 15a). Flows were relatively low for the study intervals of 1999, 2001, 2005, 2007, 2008 and 2009. Average wind speeds were comparable for all study years (figure 15b). Total phosphorus loading from point sources has decreased over the study period, with major decreases since 2006 associated with upgrades in phosphorus treatment at the IAWWTP (figure 15c).

Study period medians (median of all values measured at sites 1, 3, 4, 5 and 7) for TP and Tn on the shelf were lowest in 1999, the driest of the study years (figure 15f). Variability of TP and turbidity were lowest during the 1999 and 2007 study intervals, which were characterized by low surface flow. Median shelf TP in 2009 was similar to that observed in 2008 and was among the lowest of the entire study period, only slightly above that of 1999. Median Chlorophyll-a declined nearly 20% since 2008 (the year with the highest median observed Chlorophyll-a on the shelf).

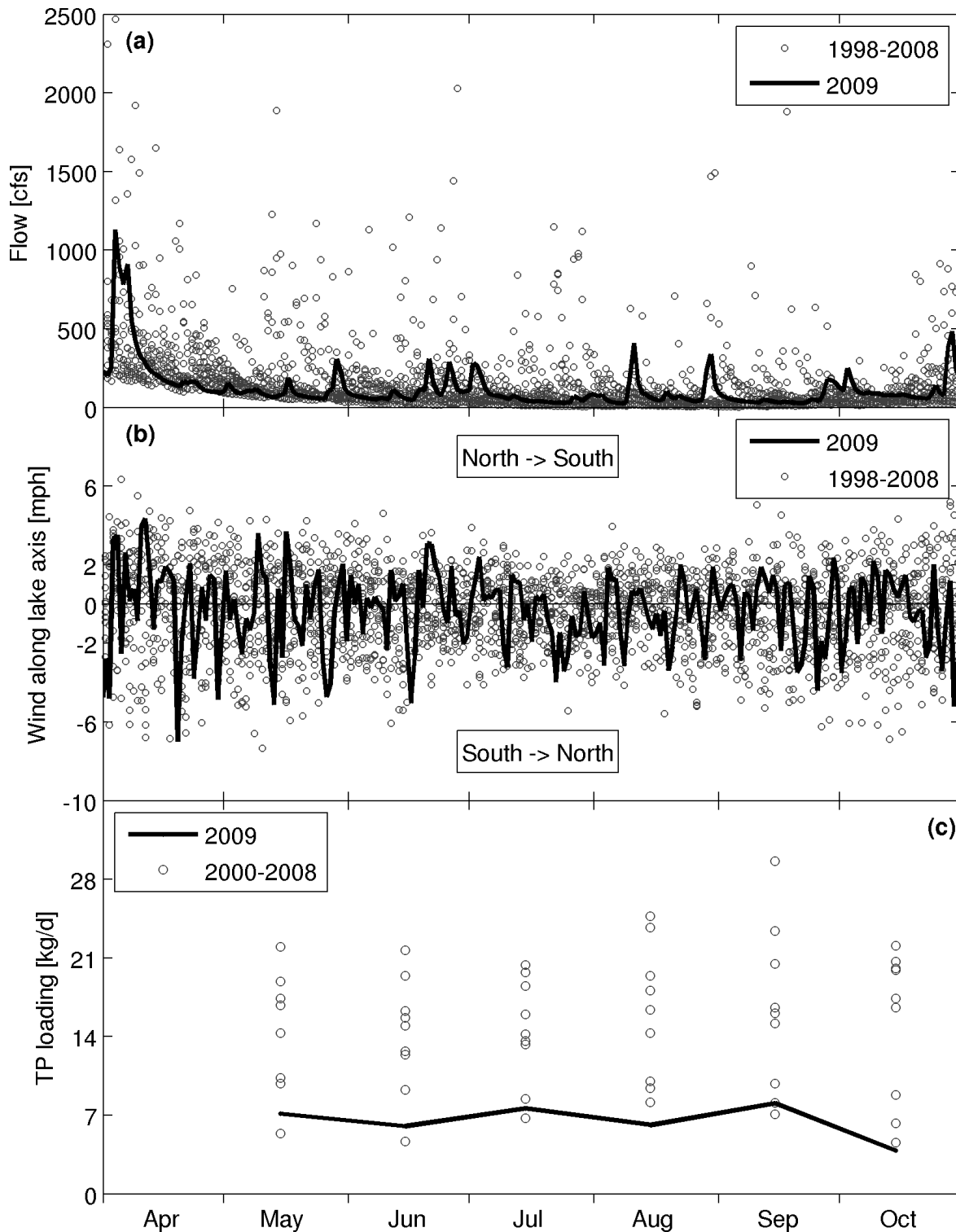


Figure 13: Comparison of 2009 conditions for surface runoff, wind, and total phosphorus loading with conditions from the 1998 - 2008 interval: (a) median daily flows in Fall Creek, (b) daily average wind component along lake's long axis as measured at Game Farm Road, and (c) summed monthly loads of total phosphorus (TP) to southern Cayuga Lake from the IAWWTP, CHWWTP, and the LSC facility.



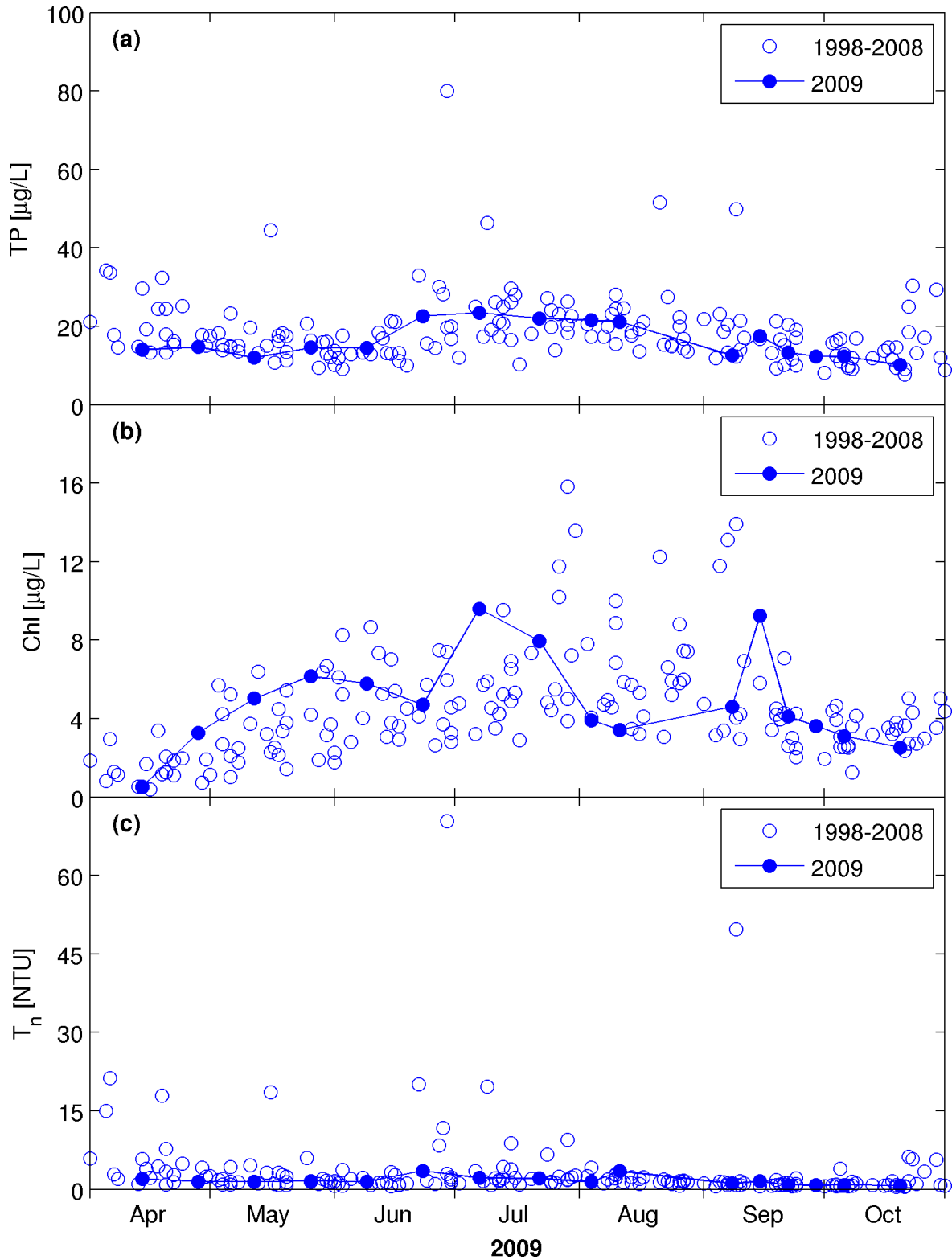


Figure 14: Comparison of 2009 conditions for total phosphorus, Chlorophyll-a, and turbidity on the south shelf of Cayuga Lake with conditions from the 1998 - 2008 interval: (a) total phosphorus (TP), (b) Chlorophyll-a, and (c) turbidity ( $T_n$ ).

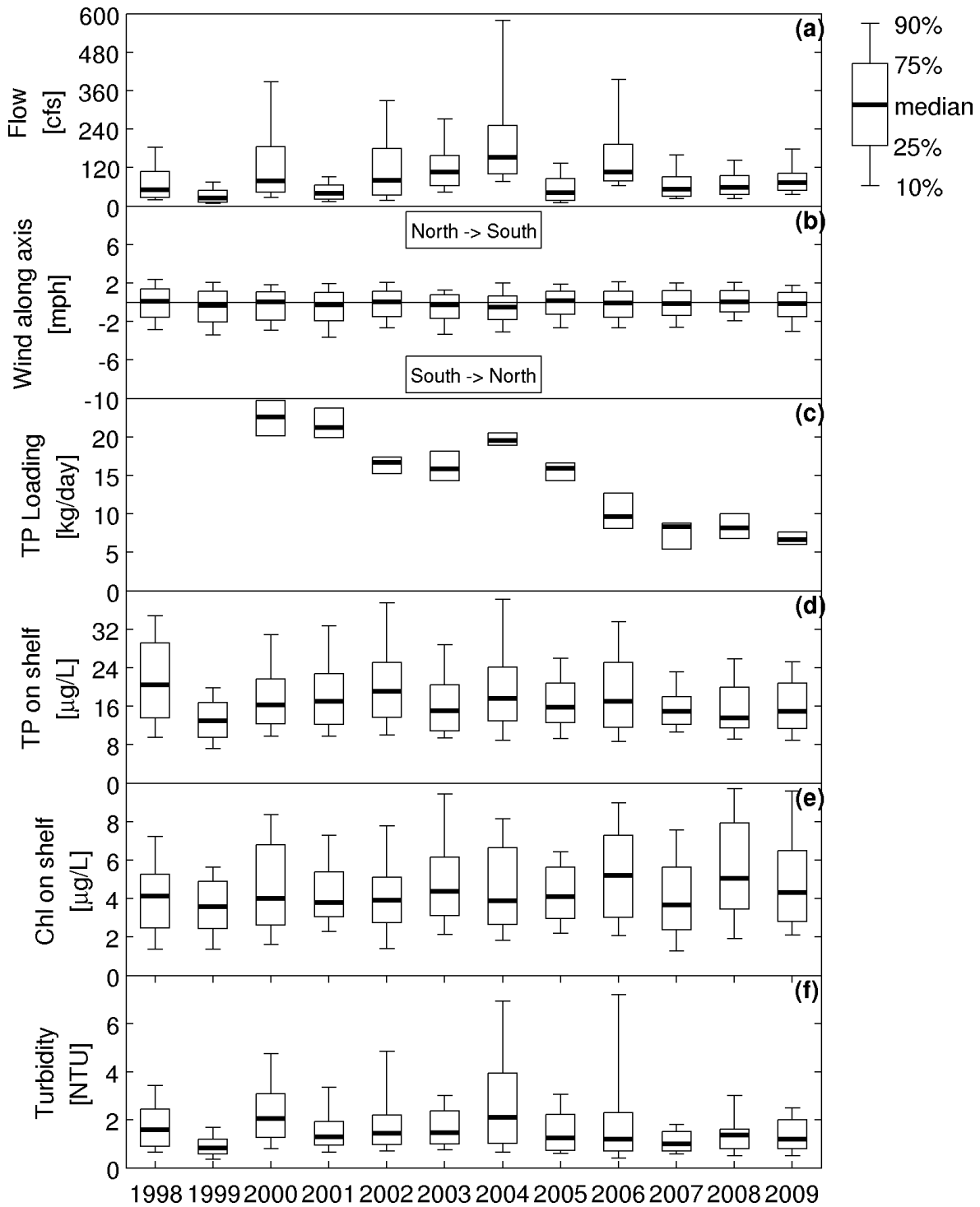


Figure 15: Comparison of study interval runoff, wind, total phosphorus loading, total phosphorus concentration, Chlorophyll-a concentration and turbidity. Legend marks percentile range of data. (a) Fall Creek flow, (b) wind speed, (c) summed loads of total phosphorus (TP) from the IAWWTP, CHWWTP and the LSC facility, (d) total phosphorus concentration on the south shelf, (e) Chlorophyll-a concentration on the south shelf, and (f) turbidity on the south shelf. Data plotted are from the May - October interval. Shelf data includes measurements from sites 1, 3, 4, 5 and 7.

## 5 Noteworthy Observations from the 2009 Data

1. The highest average concentrations of total phosphorus (TP) and turbidity (Tn) were measured at sites 2, 3 and 7 (table 5). Site 2 is located adjacent to the outfall of the IAWWTP and site 7 is nearby the outfall of the CHWWTP. Both site 2 and site 3 are located directly in the path of the inflows from Fall Creek and the Cayuga Inlet.
2. In previous years extremely high concentrations of phosphorus (TP, TDP, and SRP) and nitrogen (TDN and T-NH<sub>3</sub>) were observed at site 2. The highest levels of phosphorus in 2009 were still observed at site 2. However, observed levels of phosphorus at this site have diminished somewhat relative to previous years, likely as a result of improvements in phosphorus treatment at the IAWWTP.
3. Chlorophyll-a (Chl) concentrations were lower on the south shelf than at deep water locations, with the exception of sites 2 and 7 which had the highest overall average Chlorophyll-a values (table 5).
4. Substantial spatial variations were observed within the southern end of the lake ("shelf") for most parameters included in the monitoring program (figure 3, table 5).
5. Variance of TP was generally greater for the south shelf sites than for deep water sites (sites 6, 8 and LSC; table 5).
6. Variance of Chlorophyll-a (Chl) was similar at most sites and slightly higher at site 7 (table 5).
7. The mean and variance of Tn was highest at sites 2, 3 and 7 (table 5).
8. Average Chlorophyll-a concentrations were higher in 2006 - 2008 than in preceding study years. The range of Chlorophyll-a concentrations observed in 2009 was lower than in 2006 - 2008, and was more in line with average Chlorophyll-a concentrations in prior years (figure 15 and table 9). It is possible that these increases in Chlorophyll-a are related to observed increases in phosphorus in the lake's hypolimnion since 2003, which appears to have peaked and to be trending back down (figure 11).
9. Increases in TP, SRP, and Tn since 2003 have been observed in the LSC effluent (figure 10, figure 11) and in the deep waters of the lake adjacent to the LSC intake (UFI 2007). The cause of these increases has not been established. However, since 2005 TP levels in the effluent have decreased (although they are still higher than pre 2003 values) and SRP and Tn have remained fairly stable (figure 11).
10. Temperatures, measured hourly at the "pile cluster", dropped precipitously on a number of occasions, suggesting the occurrence of relatively cool tributary inflows or seiche activity (figure 3).
11. Turbidity (Tn) values and concentrations of soluble reactive phosphorus (SRP) were essentially equal in the LSC influent and effluent (figure 5).
12. Median total phosphorus (TP) concentrations in the LSC effluent in 2009 was 15.1 µg/Liter (the same as in 2008; figure 11).
13. The concentration of total phosphorus (TP) in the LSC effluent was similar to the concentration on the south shelf on most sampling days (figure 6). On average, the TP concentration in the LSC effluent was 0.7 µg/Liter lower than the receiving waters of the shelf (table 7).
14. The concentration of soluble reactive phosphorus (SRP) was routinely higher in the LSC effluent than on the shelf (figure 6), consistent with projections made in the Draft Environmental Impact Statement (Stearns and Wheler 1997); on average, the concentration was 7.5 µg/Liter higher (table 7).

15. The mean concentration of total phosphorus (TP) in the LSC effluent was 0.7 µg/Liter higher in 2009 than in 2008 and the mean concentration of soluble reactive phosphorus (SRP) was 0.3 µg/Liter higher than in 2008 (table 7). However, median TP was the same in the LSC effluent in 2008 and 2009, and median SRP was 0.3 µg/Liter lower in 2009 than in 2008 (figure 11).
16. Turbidity (Tn) values for the LSC effluent were similar to values on the shelf on most sampling days (figure 6). Exceptions to this were during runoff events in April, June and August which caused elevated turbidity on the shelf. On average, turbidity was 0.5 NTU lower in the LSC effluent than on the shelf (table 7).
17. Secchi disc transparency (SD) was observed to extend beyond the lake depth at multiple sites on several occasions during the 2009 study interval (Appendix A).
18. Phosphorus loading from the IAWWTP averaged 2.3 kg/day over the May to October interval of 2009. This represents a 36% decrease from the 2007 - 2008 levels, an 80% decrease relative to the 2002 - 2004 levels, and an 87% decrease relative to 2000 (table 6).
19. Phosphorus loading from the CHWWTP averaged 2.6 kg/day over the May to October interval of 2009. This was the second lowest mean seasonal loading of the 2000 - 2009 period (table 6).
20. In previous years the IAWWTP was the dominant of the three point sources in terms of phosphorus loading to the shelf. However, the loading from the plant has been dropping following improvements in treatment processes. Average May - October phosphorus loading from IAWWTP in 2009 was slightly lower than the loading from CHWWTP. Mean May - October loading from each of the WWTPs was at least 50% higher than the mean loading from LSC in the same period of 2009 (table 6).
21. During years/months with low surface runoff the relative importance of the two WWTPs as loading sources is at least as significant as the phosphorus loading from the tributaries (table 6).
22. The improvements in the IAWWTP treatment processes and subsequent reduction in phosphorus loading to the shelf are more significant than any observed increase in loading from LSC due to changes in hypolimnetic phosphorus concentrations (figure 15c).
23. The TP loading rate to the shelf from LSC peaked in 2005, with a mean 1.8 kg/day over the May - October interval. The loading rate has dropped in subsequent years and was 1.5 kg/day over May - October of each of the years 2007 - 2009 (table 6).
24. The average TP loading rate to the shelf from LSC for the May to October interval of 2009 was 1.5 kg/day, 48% lower than the 2.9 kg/day projected in the Draft Environmental Impact Statement (table 6).
25. The Fall Creek hydrograph for 2009 reflects relatively dry conditions for most of the year (figure 13).
26. Winds aligned with the lake's long axis were near or above long-term average values for several extended periods during the year (figure 13). Annual average wind speeds have been essentially constant over the 1998 - 2009 interval (figure 15).
27. Summer average concentrations of TP and Chlorophyll-a for deep water sites continue to be consistent with mesotrophy, an intermediate level of primary productivity (table 8 and table 9). The summer average concentration of Chlorophyll-a in 2009 (6.2 µg/Liter) was about 25% higher than observed over the 1998 - 2005 interval (table 9). However this value is approximately 17% lower than the summer average values observed during 2006 - 2008 (table 9).
28. Study period yearly median values for TP on the shelf have ranged from 13.0 - 20.4 µg/Liter (figure 15). Median shelf TP in 2009 (15 µg/Liter) was the fourth lowest of all study years since 1998 (figure 15).

29. Study period median values for Chlorophyll-a on the shelf have exhibited relatively little interannual variability over the 1998 - 2009 interval, ranging from 3.6 - 5.2 µg/Liter. The median shelf Chlorophyll-a in 2009 was the fourth highest of the study period (4.3 µg/Liter; figure 15e) and the summer average Chlorophyll-a on the shelf was the sixth highest of the study period (5.9 µg/Liter; table 9). Chlorophyll-a concentrations in deep water sites were similar to those measured on the shelf.
30. Study period median values of Tn on the shelf were lowest during low runoff years. Median shelf Tn in 2009 was among the lowest of the study period (figure 15f).
31. The increase in phosphorus concentrations at the LSC intake after 2003 could represent significant lake-wide changes in water quality. Since 2005 TP levels have declined and SRP levels have remained fairly constant (figure 11).
32. No conspicuous changes in water quality have been observed on the shelf since start-up of the LSC facility in July 2000 (Upstate Freshwater Institute 1999, 2000, 2001, 2002, 2003, 2004, 2005, 2006, 2007; Cornell University 2008, 2009).

## 6 Summary

This report presents the design and salient findings of a water quality monitoring study conducted for Cayuga Lake in 2009, sponsored by Cornell University Department of Utilities and Energy Management. This is the twelfth annual report for a monitoring program that has been conducted since 1998. A number of noteworthy findings are reported here for 2009 that have value for lake management. Water quality on the south shelf has been observed to vary substantially from year to year. Potential sources of variation include interannual differences in surface runoff, loading from WWTPs, and wind. Runoff during 2009 was among the lowest since 1998. Phosphorus loading to the shelf from the point sources has been dropping since 2006 following upgrades to the WWTPs, and combined TP loading from LSC and the two WWTPs was lower in 2009 than any year since the LSC plant became operational. Summer average TP on the shelf has also been lower following the plant upgrades. However, summer average Chlorophyll-a concentrations during 2006 - 2008 were among the highest levels observed over the 1998 - 2009 interval. Summer average Chlorophyll-a concentrations in 2009 were lower than during 2006 - 2008. These trends were observed both on the shelf and in the deeper part of the lake and therefore do not appear to indicate a localized effect on the shelf. It is possible that the higher levels of Chlorophyll-a are related to the increase in phosphorus in the lake's hypolimnion observed since 2004 - 2005. Summer average concentrations of total phosphorus and Chlorophyll-a for deep water sites continue to be consistent with mesotrophy. Total phosphorus concentrations and turbidity values were similar in the LSC effluent and the receiving waters of the shelf. Soluble reactive phosphorus concentrations were distinctly higher in the LSC effluent than on the shelf. The total phosphorus loading rate to the shelf from LSC was 48% lower than projected in the Draft Environmental Impact Statement. After increasing sharply from 2003 - 2005 the TP concentration in the LSC intake appears to be declining. The cause of higher phosphorus concentrations at the LSC intake has not been established. The correlation of dates on which higher levels of phosphorus have been measured on the shelf with dates on which there were either elevated tributary flows, upwelling events or temporarily increased loading from the two WWTPs indicates that these are the dominant factors in determining the water quality on the shelf. No conspicuous changes in water quality have been observed on the shelf since start-up of the LSC facility in July 2000.

## References

- APHA 1998 *Standard methods for the examination of water and wastewater*, 20th edn. Washington, D.C.: American Public Health Association, American Water Works Association and Water Environment Federation.
- AUER, M.T., K.A. TOMASOSKI M.J. BABIERA M. NEEDHAM S.W. EFFLER E.M. OWENS & HANSEN, J.M. 1998 Particulate phosphorus bioavailability and phosphorus cycling in cannonsville reservoir. *Lake and Reserv. Manage.* **14 (2-3)**, 278–289.
- AUER, M.T. & EFFLER, S.W. 1989 Variability in photosynthesis: impact on DO models. *J. Environ. Engng. Div. ASCE* **115**, 944–963.
- BLOESCH, J. 1995 Mechanisms, measurement, and importance of sediment resuspension in lakes. *Mar. Freshwat. Res* **46**, 295–304.
- BOULDIN, D.R. 1975 *Nitrogen and Phosphorus; Food Production, Waste, in the Environment*, chap. Transport in Streams. Ann Arbor, MI: Ann Arbor Science Publishers, Inc.
- BOWIE, G.L., W.B. MILLS D.B. PORCELLA C.L. CAMPBELL J.R. PAGENKOPF G.L. RUPP K.M. JOHNSON P.W.H. CHAN S.A. GHERINI & CHAMBERLAIN, C. 1985 *Rates, constants, and kinetic formulations in surface water quality modeling*. Athens, GA.: U.S. Environmental Protection Agency.
- CALLINAN, C. W. 2001 Water quality study of the finger lakes. *Tech. Rep.*. NYSDEC.
- CHAPRA, S.C. & DOBSON, H.F.H. 1981 Quantification of the lake typologies of naumann (surface growth) and thienemann (oxygen) with special reference to the great lakes. *J. Great Lakes Res* **7**, 182–193.
- CORNELL UNIVERSITY 2008 Cayuga lake water quality monitoring, related to the LSC facility: 2007. *Tech. Rep.*. DeFrees Hydraulics Laboratory, School of Civil and Environmental Engineering, Cornell University, Ithaca, NY 14853-3501.
- CORNELL UNIVERSITY 2009 Cayuga lake water quality monitoring, related to the LSC facility: 2008. *Tech. Rep.*. DeFrees Hydraulics Laboratory, School of Civil and Environmental Engineering, Cornell University, Ithaca, NY 14853-3501.
- DOBSON, H.F.H., M. GILBERTSON & SLY, P.G. 1974 A summary and comparison of nutrients and related water quality in Lakes Erie, Ontario and Superior. *J. of the Fisheries Res. Board of Canada* **31**, 731–738.
- EBINA, J., T. TSUTSUI & SHIRAI 1983 Simultaneous determination of total nitrogen and total phosphorus in water using peroxodisulfate oxidation. *Wat. Res.* **17**, 1721–1726.
- EFFLER, S. W., D. A. MATTHEWS M. G. PERKINS D. L. JOHNSON F. PENG M. R. PENN & AUER, M. T. 2002 Patterns and impacts of inorganic tripton in cayuga lake. *Hydrobiologia* **482**, 137–150.
- EFFLER, S.W., M.T. AUER & JOHNSON, N.A. 1989 Modeling Cl concentration in Cayuga Lake, USA. *Water Air Soil Pollut.* **44**, 347–362.
- EFFLER, S. W., M. G. PERKINS & JOHNSON, D. L. 1998 The optical water quality of cannonsville reservoir: Spatial and temporal structures, and the relative roles of phytoplankton and inorganic tripton. *Lake and Reservoir Management* **14(2/3)**, 238–253.
- EFFLER, S.W. 1988 Secchi disc transparency and turbidity. *Journal of Environmental Engineering Division, ASCE* **114**, 1436–1447.
- EFFLER, S.W. & JOHNSON, D.L. 1987 Calcium carbonate precipitation and turbidity measurements in Otisco Lake, NY. *Water Resources Bulletin* **23**, 73–77.

- GODFREY, P. J. 1977 Spatial and temporal variation of the phytoplankton in Cayuga Lake. PhD thesis, Cornell University, Ithaca, NY.
- HALFMAN, J. D. & FRANKLIN, C. K. 2008 Water quality of Seneca Lake, New York: A 2007 update. [http://people.hws.edu/Halfman/Data/2007 Seneca Report.pdf](http://people.hws.edu/Halfman/Data/2007%20Seneca%20Report.pdf).
- HAMILTON, D. H. 1969 Nutrient limitation of summer phytoplankton growth in Cayuga Lake. *Limnol. Oceanogr.* **14**, 579–590.
- NELAP (NATIONAL ENVIRONMENTAL LABORATORY APPROVAL PROGRAM) 2003 *Environmental laboratory approval program certification manual*. New York State Department of Health.
- OGLESBY, R.T. 1979 *Lakes of New York State*, , vol. I, chap. The limnology of Cayuga Lake, pp. 2–121. Academic Press, Inc.
- PETERSON, B. J. 1971 The role of zooplankton in the phosphorus cycle of Cayuga Lake. PhD thesis, Cornell University, Ithaca, NY.
- RUEDA, F.J. & COWEN, E.A. 2005 The residence time of a freshwater embayment connected to a large lake. *Limnology & Oceanography* **50**, 1638–1653.
- STEARNS & WHEELER 1997 Environmental impact statement - lake source cooling project: Cornell University. *Tech. Rep.*. Stearns and Wheeler.
- TRAUTMANN N. M., C. E. MCCULLOCH & OGLESBY, R. T. 1982 Statistical determination of data requirements for assessment of lake restoration programs. *Can. J. Fish. Aquat. Sci.* **39**, 607–610.
- UFI 2000a Cayuga Lake water quality monitoring, related to the LSC facility: 1998. *Tech. Rep.*. Upstate Freshwater Institute, Box 506, Syracuse, NY 13214.
- UFI 2000b Cayuga Lake water quality monitoring, related to the LSC facility: 1999. *Tech. Rep.*. Upstate Freshwater Institute, Box 506, Syracuse, NY 13214.
- UFI 2001 Cayuga Lake water quality monitoring, related to the LSC facility: 2000. *Tech. Rep.*. Upstate Freshwater Institute, Box 506, Syracuse, NY 13214.
- UFI 2002 Cayuga Lake water quality monitoring, related to the LSC facility: 2001. *Tech. Rep.*. Upstate Freshwater Institute, Box 506, Syracuse, NY 13214.
- UFI 2003 Cayuga Lake water quality monitoring, related to the LSC facility: 2002. *Tech. Rep.*. Upstate Freshwater Institute, Box 506, Syracuse, NY 13214.
- UFI 2004 Cayuga Lake water quality monitoring, related to the LSC facility: 2003. *Tech. Rep.*. Upstate Freshwater Institute, Box 506, Syracuse, NY 13214.
- UFI 2005 Cayuga Lake water quality monitoring, related to the LSC facility: 2004. *Tech. Rep.*. Upstate Freshwater Institute, Box 506, Syracuse, NY 13214.
- UFI 2006 Cayuga Lake water quality monitoring, related to the LSC facility: 2005. *Tech. Rep.*. Upstate Freshwater Institute, Box 506, Syracuse, NY 13214.
- UFI 2007 Cayuga Lake water quality monitoring, related to the LSC facility: 2006. *Tech. Rep.*. Upstate Freshwater Institute, Box 506, Syracuse, NY 13214.
- USEPA 1974 Report on Cayuga Lake, Cayuga, Seneca, and Tompkins counties, New York. Working paper no. 153, EPA National Eutrophication Survey. United States Environmental Protection Agency Region II, Las Vegas.
- USEPA 1983 *Methods for chemical analysis of water and wastes*. United States Environmental Protection Agency Environmental Monitoring and Support Laboratory.

- USEPA 1997 *USEPA Methods for the Determination of Chemical Substances in Marine and Estuarine Environmental Samples*, chap. In vitro determination of Chlorophyll-a and phaeophytin in marine and freshwater phytoplankton by fluorescence, adapted by E. J. Arar and G. B. Collins. Cincinnati, OH 45268: Environmental Monitoring Systems Laboratory, Office of Research and Development, USEPA.
- VOLLENWEIDER, R.A. 1975 Input-output models with special reference to the phosphorus loading concept in limnology. *Schweiz. J. Hydrol.* **33**, 53–83.
- WEIDEMANN, A.D. & BANNISTER, T.T. 1986 Absorption and scattering coefficients in Irondequoit Bay. *Limnol. Oceanogr.* **31**, 567–583.
- WETZEL, R.G. & LIKENS, G.E. 1991 *Limnological analyses*, 2nd edn. New York: Springer-Verlag.
- WRIGHT, T. D. 1969 *Ecology of Cayuga Lake and the Proposed Bell Station (Nuclear Powered)*, chap. Plant pigments (Chlorophyll-a and phaeophytin). Ithaca, New York.: Cornell Univ. Water Resour. And Mar. Sci. Cent.



## Appendix A In Lake Monitoring Data Listing

### Total Phosphorus ( $\mu\text{g/Liter}$ )

| Dates:     | 04/14/09 | 04/28/09 | 05/12/09 | 05/26/09 | 06/09/09 | 06/23/09 | 07/07/09 | 07/22/09 | 08/04/09 | 08/11/09 | 09/08/09 | 09/15/09 | 09/22/09 | 09/29/09 | 10/06/09 | 10/20/09 |
|------------|----------|----------|----------|----------|----------|----------|----------|----------|----------|----------|----------|----------|----------|----------|----------|----------|
| Sites:     |          |          |          |          |          |          |          |          |          |          |          |          |          |          |          |          |
| 1          | 18.4     | 15.1     | 13.6     | 13.5     | 10.2     | 23.2     | 19.1     | 18.2     | 16       | 23.2     | 14.9     | 23.6     | 13.1     | 13.1     | 10.5     | 9.5      |
| 2          | 18.1     | 14.1     | 15.6     | 15.4     | 14.6     | 26.4     | 37.9     | 27.5     | 24.1     | 58.7     | 33.6     | 24.8     | 24       | 26.9     | 17.9     | 31.9     |
| 3          | 12.1     | 15.5     | 14.6     | 15.4     | 11.2     | 25.2     | 25.9     | 20.2     | 21.2     | 36.3     | 12.1     | 15.6     | 20.8     | 15       | 16       | 10.8     |
| 4          | 13.7     | 13.1     | 8.8      | 12.2     | 12.2     | 20.7     | 23.6     | 23.5     | 29.6     | 12.6     | 8.6      | 13       | 10.5     | 7.6      | 8.2      | 8.9      |
| 5          | 11.7     | 14.1     | 10.5     | 16.4     | 11.2     | 10.7     | 17.5     | 16.6     | 17       | 13       | 12.1     | 13.3     | 8.9      | 11.1     | 12.1     | 10.4     |
| 6          | 11.7     | 13.5     | 11.5     | 14.8     | 10.2     | 13.9     | 15.5     | 17.2     | 12.5     | 13.3     | 11.8     | 14.6     | 10.2     | 8.9      | 10.8     | 9.8      |
| 7          | 19.1     | 17.8     | 14.9     | 15.1     | 36.9     | 44.7     | 35       | 37.5     | 20.9     | 22.5     | 20       | 33       | 13.4     | 18.5     | 15.6     | 11.4     |
| 8          | 12.1     | 13.5     | 12.9     | 13.5     | 8.5      | 10       | 11       | 17.6     | 13.1     | 12.6     | 12.1     | 13       | 9.3      | 9.2      | 9.2      | 8.5      |
| LSC Intake | 12.4     | 12.8     | 12.6     | 14.1     | 9.5      | 11       | 12.6     | 15.9     | 12.5     | 12       | 13.1     | 14.3     | 9.9      | 7.6      | 9.5      | 8.9      |

37

### Soluble Reactive Phosphorus ( $\mu\text{g/Liter}$ ) values reported as 0.25 are 1/2 the limit of detection ( $0.5 \times 0.5 = 0.25$ )

| Dates:     | 04/14/09 | 04/28/09 | 05/12/09 | 05/26/09 | 06/09/09 | 06/23/09 | 07/07/09 | 07/22/09 | 08/04/09 | 08/11/09 | 09/08/09 | 09/15/09 | 09/22/09 | 09/29/09 | 10/06/09 | 10/20/09 |
|------------|----------|----------|----------|----------|----------|----------|----------|----------|----------|----------|----------|----------|----------|----------|----------|----------|
| Sites:     |          |          |          |          |          |          |          |          |          |          |          |          |          |          |          |          |
| 1          | 5.9      | 3.7      | 0.25     | 0.25     | 0.25     | 1.2      | 0.25     | 0.5      | 0.25     | 1.7      | 0.8      | 0.9      | 2        | 1.9      | 0.25     | 0.25     |
| 2          | 5.4      | 4.7      | 1.2      | 0.25     | 0.5      | 3.5      | 0.5      | 0.25     | 0.25     | 9        | 1.1      | 1.2      | 1.7      | 2.3      | 3.2      | 7        |
| 3          | 6.4      | 4        | 1        | 0.25     | 1.7      | 2.7      | 0.25     | 0.7      | 0.25     | 5.7      | 1.8      | 0.25     | 1.3      | 0.25     | 0.25     | 0.25     |
| 4          | 6.2      | 5.3      | 0.25     | 0.25     | 0.25     | 1.3      | 0.25     | 0.25     | 0.25     | 0.25     | 1.1      | 0.25     | 1.7      | 0.25     | 0.25     | 0.9      |
| 5          | 7.2      | 4.5      | 0.25     | 0.25     | 0.25     | 1.2      | 0.25     | 0.25     | 0.25     | 0.25     | 0.6      | 0.25     | 0.7      | 0.25     | 0.25     | 0.6      |
| 6          | 7        | 5.3      | 0.25     | 0.25     | 0.25     | 1        | 0.25     | 0.25     | 0.25     | 0.25     | 1.1      | 0.25     | 0.7      | 0.25     | 0.25     | 0.25     |
| 7          | 4.8      | 4.4      | 0.25     | 0.25     | 0.25     | 3.6      | 0.5      | 0.5      | 1.1      | 0.25     | 1.5      | 0.25     | 1.5      | 0.5      | 0.6      | 0.8      |
| 8          | 7        | 6.7      | 0.25     | 0.25     | 0.25     | 0.25     | 0.25     | 0.25     | 0.25     | 0.25     | 1.2      | 0.25     | 0.7      | 0.25     | 0.25     | 0.25     |
| LSC Intake | 7.2      | 5.9      | 0.25     | 0.25     | 0.25     | 0.8      | 0.25     | 0.25     | 0.25     | 0.25     | 0.6      | 0.25     | 0.6      | 0.25     | 0.25     | 0.25     |

**Chlorophyll-a ( $\mu\text{g/Liter}$ )**

| Dates:     | 04/14/09 | 04/28/09 | 05/12/09 | 05/26/09 | 06/09/09 | 06/23/09 | 07/07/09 | 07/22/09 | 08/04/09 | 08/11/09 | 09/08/09 | 09/15/09 | 09/22/09 | 09/29/09 | 10/06/09 | 10/20/09 |
|------------|----------|----------|----------|----------|----------|----------|----------|----------|----------|----------|----------|----------|----------|----------|----------|----------|
| Sites:     |          |          |          |          |          |          |          |          |          |          |          |          |          |          |          |          |
| 1          | 0.8      | 3.6      | 4.2      | 5.6      | 3.6      | 4.6      | 6.1      | 9.9      | 3.2      | 3.6      | 5.1      | 10.4     | 2        | 2.2      | 3        | 2.6      |
| 2          | 0.5      | 2.9      | 4.2      | 6.3      | 3.9      | 3.9      | 15       | 8.8      | 8.7      | 1.7      | 14.3     | 7.2      | 6.8      | 7.1      | 1.7      | 2.3      |
| 3          | 0.4      | 4        | 4.2      | 4.3      | 4.6      | 4.3      | 14       | 6.4      | 6.3      | 3.8      | 3        | 2.7      | 9.5      | 5.9      | 2.7      | 3.4      |
| 4          | 0.4      | 2.5      | 4.1      | 5.9      | 5.9      | 3.4      | 7.9      | 10       | 2.6      | 1.7      | 2.5      | 7.1      | 1.8      | 2.3      | 2.1      | 2.1      |
| 5          | 0.3      | 3        | 7.4      | 9.6      | 4.1      | 3.5      | 6.5      | 6.3      | 2.6      | 2.8      | 6        | 8.5      | 2.8      | 2        | 4.7      | 2.2      |
| 6          | 0.4      | 2.9      | 9.7      | 8.7      | 4.8      | 4        | 4.9      | 13.1     | 4.3      | 3.7      | 5.9      | 11.5     | 3        | 2.8      | 5        | 2.8      |
| 7          | 1.1      | 3.7      | 4.6      | 4.2      | 13.5     | 10.65    | 13.9     | 8.4      | 5.1      | 7.2      | 8.8      | 27       | 2.6      | 6.4      | 2.9      | 2.3      |
| 8          | 0.5      | 1.7      | 8.1      | 9.2      | 5.8      | 3        | 4.5      | 14.3     | 5.6      | 4.2      | 10.5     | 11       | 3.8      | 3.1      | 3.5      | 2.4      |
| LSC Intake | 0.4      | 2.3      | 10.8     | 9.7      | 5.4      | 3.5      | 2.8      | 12.4     | 3.5      | 3.7      | 10.1     | 11.8     | 3.3      | 3.2      | 3.8      | 2.4      |

**Turbidity (*NTU*)**

| Dates:     | 04/14/09 | 04/28/09 | 05/12/09 | 05/26/09 | 06/09/09 | 06/23/09 | 07/07/09 | 07/22/09 | 08/04/09 | 08/11/09 | 09/08/09 | 09/15/09 | 09/22/09 | 09/29/09 | 10/06/09 | 10/20/09 |
|------------|----------|----------|----------|----------|----------|----------|----------|----------|----------|----------|----------|----------|----------|----------|----------|----------|
| Sites:     |          |          |          |          |          |          |          |          |          |          |          |          |          |          |          |          |
| 1          | 3.9      | 1.3      | 2.2      | 1.2      | 1.2      | 3.2      | 1.8      | 2.2      | 1.1      | 2.2      | 2.4      | 2.4      | 0.7      | 0.6      | 0.7      | 0.5      |
| 2          | 2.8      | 1.3      | 2.3      | 1.5      | 1.6      | 4.6      | 3.3      | 2.4      | 2.8      | 22.3     | 1.8      | 1.5      | 1.3      | 2.2      | 0.9      | 1.8      |
| 3          | 1.4      | 1.8      | 2        | 1.6      | 1.2      | 4.1      | 3.2      | 2        | 1.6      | 10.4     | 0.6      | 0.6      | 1        | 1.2      | 0.9      | 0.9      |
| 4          | 1.9      | 1        | 1        | 1.8      | 1.4      | 2.7      | 1.7      | 2.2      | 1.6      | 0.6      | 0.7      | 1.2      | 0.5      | 0.6      | 1        | 0.5      |
| 5          | 0.7      | 1.9      | 0.7      | 1.7      | 1.3      | 1.2      | 1.6      | 2.1      | 1.2      | 0.9      | 1.2      | 2.2      | 1        | 0.6      | 0.7      | 0.8      |
| 6          | 0.6      | 1.5      | 1.2      | 1.4      | 1        | 1.1      | 1.2      | 1.7      | 0.8      | 1        | 1.6      | 2.5      | 1.1      | 0.6      | 0.7      | 0.5      |
| 7          | 4.4      | 1.4      | 2.5      | 1.2      | 3.1      | 9.2      | 2.8      | 1.8      | 1.5      | 1.9      | 1.3      | 2        | 0.8      | 0.9      | 0.8      | 0.8      |
| 8          | 0.8      | 1.1      | 1.3      | 1.4      | 0.9      | 1        | 0.8      | 1.4      | 1.1      | 1.1      | 2.4      | 2.5      | 1.2      | 0.6      | 0.8      | 0.5      |
| LSC Intake | 1        | 0.5      | 1        | 1.2      | 0.8      | 0.9      | 0.9      | 1.8      | 0.8      | 0.9      | 3.4      | 2.4      | 1        | 0.6      | 0.7      | 0.6      |

### Secchi Disc Depth (m)

| Dates:     | 04/14/09 | 04/28/09 | 05/12/09 | 05/26/09 | 06/09/09 | 06/23/09 | 07/07/09 | 07/22/09 | 08/04/09 | 08/11/09 | 09/08/09 | 09/15/09 | 09/22/09 | 09/29/09 | 10/06/09 | 10/20/09 |
|------------|----------|----------|----------|----------|----------|----------|----------|----------|----------|----------|----------|----------|----------|----------|----------|----------|
| Sites:     |          |          |          |          |          |          |          |          |          |          |          |          |          |          |          |          |
| 1          | 1.68     | bottom   | 2.19     | 3.18     | 3.44     | 1.65     | veg.     | veg.     | veg.     | veg.     | veg.     | 2.16     | veg.     | veg.     | bottom   | bottom   |
| 2          | 2.08     | bottom   | 2.06     | 2.71     | 3.08     | 1.52     | 1.74     | veg.     | veg.     | 0.19     | veg.     | veg.     | veg.     | 2.28     | bottom   | bottom   |
| 3          | bottom   | bottom   | 2.48     | 2.63     | 3.48     | 1.52     | 1.69     | veg.     | veg.     | 0.42     | veg.     | veg.     | veg.     | veg.     | veg.     | bottom   |
| 4          | 3.19     | bottom   | bottom   | 2.78     | bottom   | 2.29     | veg.     | veg.     | veg.     | veg.     | veg.     | veg.     | veg.     | veg.     | veg.     | bottom   |
| 5          | bottom   | bottom   | 3.74     | 2.54     | 3.03     | 4.51     | 2.66     | 1.63     | 3.96     | 4.03     | 4.53     | 2.39     | 4.3      | bottom   | bottom   | bottom   |
| 6          | 8.76     | 6.92     | 3.88     | 3.03     | 4.16     | 4.45     | 2.84     | 1.65     | 4.93     | 4.38     | 3.72     | 1.98     | 3.94     | 5.36     | 5.46     | 8.78     |
| 7          | 1.9      | bottom   | 1.95     | bottom   | 2.97     | 1.2      | veg.     | veg.     | veg.     | veg.     | veg.     | veg.     | veg.     | veg.     | veg.     | bottom   |
| 8          | 9.66     | 10.18    | 4.57     | 3.82     | 4.78     | 4.69     | 5.91     | 1.67     | 3.63     | 4.13     | 2.42     | 2.11     | 3.21     | 5.2      | 5.25     | 5.91     |
| LSC Intake | 7.88     | 9.34     | 3.9      | 3.33     | 4.83     | 4.73     | 4.81     | 1.67     | 5.06     | 4.6      | 2.24     | 2.17     | 3.32     | 5.15     | 4.93     | 9.11     |

“bottom” indicates true Secchi disc depth was greater than lake depth

“veg.” indicates Secchi disc was obscured by rooted vegetation before reaching the true Secchi disc depth

## Appendix B Lake Source Cooling Discharge Monitoring Report Data

| Date     | Temperature<br>(°C) |              | Flow rate<br>(m <sup>3</sup> /second) |              | Dissolved<br>oxygen<br>(mg/L) |              | pH<br>(SU) |     | TP<br>(µg/L) |              | SRP<br>(µg/L) |              |
|----------|---------------------|--------------|---------------------------------------|--------------|-------------------------------|--------------|------------|-----|--------------|--------------|---------------|--------------|
|          | Daily<br>Ave        | Daily<br>Max | Daily<br>Ave                          | Daily<br>Max | Daily<br>Ave                  | Daily<br>Max | Min        | Max | Daily<br>Ave | Daily<br>Max | Daily<br>Ave  | Daily<br>Max |
| Jul 2000 | 10.3                | 10.9         | 1.2                                   | 1.3          | 11.0                          | 11.1         | 8.0        | 8.1 | 13.3         | 13.6         | 5.0           | 5.0          |
| Aug 2000 | 10.2                | 11.6         | 1.0                                   | 1.3          | 11.0                          | 11.5         | 8.0        | 8.1 | 11.6         | 13.0         | 5.9           | 6.4          |
| Sep 2000 | 9.8                 | 11.8         | 0.8                                   | 1.4          | 10.6                          | 10.9         | 7.9        | 8.1 | 12.2         | 14.4         | 6.1           | 6.9          |
| Oct 2000 | 9.1                 | 9.8          | 0.6                                   | 0.9          | 10.4                          | 10.7         | 7.8        | 8.1 | 12.0         | 14.0         | 6.7           | 8.1          |
| Nov 2000 | 9.0                 | 9.8          | 0.5                                   | 1.0          | 10.9                          | 12.2         | 7.7        | 8.1 | 14.0         | 16.0         | 6.0           | 8.0          |
| Dec 2000 | 8.2                 | 9.5          | 0.5                                   | 0.7          | 12.5                          | 12.5         | 7.9        | 7.9 | 10.9         | 10.9         | 5.9           | 5.9          |
| Jan 2001 | 7.3                 | 7.6          | 0.4                                   | 0.5          | -                             | -            | -          | -   | -            | -            | -             | -            |
| Feb 2001 | 8.2                 | 8.6          | 0.3                                   | 0.3          | 17.6                          | 20.3         | 7.9        | 8.1 | 9.5          | 11.0         | 4.4           | 4.9          |
| Mar 2001 | 6.6                 | 8.7          | 0.3                                   | 0.4          | 15.8                          | 18.2         | 8.0        | 8.1 | 10.5         | 11.6         | 3.8           | 4.2          |
| Apr 2001 | 7.9                 | 9.6          | 0.5                                   | 0.7          | 15.5                          | 17.6         | 8.0        | 8.1 | 12.0         | 14.0         | 8.0           | 8.0          |
| May 2001 | 9.1                 | 10.0         | 0.7                                   | 0.9          | 15.0                          | 18.4         | 7.9        | 8.1 | 11.4         | 13.9         | 4.3           | 5.3          |
| Jun 2001 | 10.4                | 11.4         | 1.0                                   | 1.3          | 12.0                          | 12.3         | 8.0        | 8.1 | 12.7         | 14.7         | 4.9           | 5.8          |
| Jul 2001 | 10.3                | 11.8         | 1.0                                   | 1.5          | 11.5                          | 11.6         | 7.9        | 8.0 | 12.0         | 15.0         | 5.0           | 5.6          |
| Aug 2001 | 10.7                | 11.8         | 1.2                                   | 1.5          | 11.3                          | 11.4         | 7.8        | 8.0 | 13.9         | 15.4         | 6.2           | 6.9          |
| Sep 2001 | 9.7                 | 10.8         | 0.8                                   | 1.3          | 10.8                          | 10.9         | 7.9        | 8.0 | 14.1         | 14.8         | 6.8           | 7.3          |
| Oct 2001 | 9.2                 | 10.7         | 0.6                                   | 1.1          | 10.6                          | 10.8         | 7.8        | 8.1 | 12.0         | 13.5         | 4.9           | 6.1          |
| Nov 2001 | 9.5                 | 10.4         | 0.6                                   | 1.0          | 10.4                          | 10.6         | 7.9        | 7.9 | 12.2         | 13.7         | 6.1           | 6.4          |
| Dec 2001 | 9.4                 | 10.6         | 0.5                                   | 0.8          | 10.3                          | 10.4         | 7.7        | 7.9 | 12.5         | 12.8         | 6.0           | 6.4          |
| Jan 2002 | 9.2                 | 9.4          | 0.4                                   | 0.5          | 10.6                          | 11.2         | 7.9        | 8.0 | 10.4         | 11.0         | 4.3           | 4.7          |
| Feb 2002 | 7.9                 | 8.9          | 0.4                                   | 0.4          | 11.8                          | 12.0         | 7.7        | 7.9 | 15.5         | 17.3         | 4.9           | 5.2          |
| Mar 2002 | 8.3                 | 9.3          | 0.4                                   | 0.4          | 12.2                          | 12.6         | 7.8        | 7.9 | 12.1         | 16.1         | 3.8           | 4.3          |
| Apr 2002 | 9.1                 | 10.9         | 0.5                                   | 1.1          | 11.7                          | 11.9         | 7.9        | 8.0 | 17.8         | 32.3         | 3.7           | 4.2          |
| May 2002 | 9.7                 | 10.8         | 0.7                                   | 1.1          | 11.5                          | 11.8         | 7.8        | 8.0 | 10.8         | 11.6         | 2.9           | 4.4          |
| Jun 2002 | 10.7                | 11.8         | 1.1                                   | 1.3          | 11.1                          | 11.3         | 7.9        | 8.1 | 10.8         | 12.1         | 3.9           | 4.2          |
| Jul 2002 | 10.7                | 12.0         | 1.5                                   | 1.9          | 11.3                          | 12.8         | 7.8        | 7.9 | 14.2         | 17.8         | 4.2           | 5.6          |
| Aug 2002 | 10.5                | 11.5         | 1.4                                   | 1.8          | 12.8                          | 15.6         | 7.8        | 7.9 | 9.5          | 10.3         | 3.8           | 4.7          |
| Sep 2002 | 10.0                | 11.0         | 1.2                                   | 1.8          | 15.2                          | 20.9         | 8.0        | 8.0 | 9.6          | 11.0         | 3.7           | 4.7          |
| Oct 2002 | 9.4                 | 10.3         | 0.7                                   | 1.8          | 12.7                          | 24.7         | 7.8        | 8.1 | 11.8         | 13.6         | 5.6           | 6.6          |
| Nov 2002 | 9.2                 | 10.3         | 0.6                                   | 1.7          | 10.0                          | 10.4         | 7.6        | 8.0 | 12.2         | 13.9         | 6.2           | 6.5          |
| Dec 2002 | 8.6                 | 9.1          | 0.6                                   | 1.2          | 10.5                          | 10.8         | 7.5        | 8.1 | 8.3          | 10.0         | 3.3           | 4.0          |
| Jan 2003 | 8.2                 | 9.2          | 0.4                                   | 0.5          | 10.6                          | 11.6         | 7.5        | 7.7 | 10.3         | 11.5         | 3.7           | 4.8          |
| Feb 2003 | 7.8                 | 8.2          | 0.3                                   | 0.3          | 13.4                          | 13.8         | 7.8        | 7.9 | 9.5          | 9.9          | 3.9           | 4.4          |
| Mar 2003 | 7.6                 | 9.2          | 0.3                                   | 0.4          | 12.5                          | 13.0         | 7.5        | 7.9 | 11.1         | 15.5         | 3.2           | 3.9          |
| Apr 2003 | 8.2                 | 9.4          | 0.4                                   | 0.8          | 12.8                          | 13.3         | 7.6        | 7.9 | 13.8         | 16.9         | 4.5           | 4.9          |
| May 2003 | 8.7                 | 9.6          | 0.6                                   | 0.9          | 12.7                          | 14.6         | 7.5        | 7.8 | 12.0         | 13.1         | 3.9           | 4.6          |
| Jun 2003 | 9.4                 | 10.6         | 1.0                                   | 1.5          | 12.1                          | 12.2         | 7.7        | 7.9 | 13.6         | 15.9         | 3.8           | 4.2          |
| Jul 2003 | 10.4                | 10.8         | 1.2                                   | 1.6          | 11.8                          | 12.9         | 7.6        | 7.8 | 11.1         | 12.5         | 3.9           | 5.1          |
| Aug 2003 | 10.5                | 11.6         | 1.6                                   | 2.0          | 11.6                          | 12.4         | 7.1        | 7.8 | 9.0          | 9.3          | 5.1           | 5.5          |
| Sep 2003 | 9.6                 | 10.6         | 1.2                                   | 1.8          | 11.1                          | 11.3         | 7.4        | 7.7 | 12.8         | 17.0         | 6.2           | 7.3          |
| Oct 2003 | 9.1                 | 10.1         | 0.6                                   | 0.9          | 10.3                          | 10.5         | 7.6        | 7.7 | 16.6         | 20.9         | 6.5           | 7.0          |
| Nov 2003 | 8.9                 | 9.9          | 0.6                                   | 1.2          | 10.4                          | 10.6         | 7.7        | 7.8 | 20.1         | 25.2         | 5.5           | 6.1          |
| Dec 2003 | 8.2                 | 8.8          | 0.6                                   | 1.0          | 10.6                          | 10.6         | 7.6        | 7.9 | 17.0         | 20.2         | 4.8           | 6.4          |

| Date     | Temperature (°C) |           | Flow rate (m <sup>3</sup> /second) |           | Dissolved oxygen (mg/L) |           | pH (SU) |     | TP (µg/L) |           | SRP (µg/L) |           |
|----------|------------------|-----------|------------------------------------|-----------|-------------------------|-----------|---------|-----|-----------|-----------|------------|-----------|
|          | Daily Ave        | Daily Max | Daily Ave                          | Daily Max | Daily Ave               | Daily Max | Min     | Max | Daily Ave | Daily Max | Daily Ave  | Daily Max |
| Jan 2004 | 7.7              | 9.0       | 0.4                                | 0.5       | 10.8                    | 11.1      | 7.7     | 8.1 | 32.0      | 56.1      | 5.7        | 6.1       |
| Feb 2004 | 8.5              | 8.8       | 0.2                                | 0.2       | 11.3                    | 11.7      | 7.9     | 8.1 | 15.4      | 17.8      | 6.1        | 6.3       |
| Mar 2004 | 7.8              | 8.5       | 0.3                                | 0.5       | 11.7                    | 12.1      | 7.9     | 8.0 | 14.1      | 17.9      | 6.1        | 6.6       |
| Apr 2004 | 8.4              | 9.7       | 0.4                                | 0.9       | 12.3                    | 12.8      | 7.9     | 8.1 | 16.3      | 23.7      | 6.2        | 7.4       |
| May 2004 | 9.2              | 10.2      | 0.9                                | 1.4       | 11.9                    | 12.4      | 7.9     | 8.2 | 16.6      | 17.2      | 6.4        | 6.9       |
| Jun 2004 | 9.6              | 10.8      | 0.9                                | 1.5       | 11.8                    | 12.1      | 7.9     | 8.3 | 15.7      | 17.1      | 6.5        | 8.6       |
| Jul 2004 | 10.1             | 11.0      | 1.2                                | 1.5       | 11.7                    | 12.0      | 7.9     | 7.9 | 8.9       | 10.4      | 5.6        | 7.0       |
| Aug 2004 | 9.8              | 10.9      | 1.2                                | 1.6       | 11.7                    | 11.5      | 7.7     | 8.3 | 13.5      | 14.8      | 6.6        | 8.0       |
| Sep 2004 | 9.5              | 10.3      | 1.0                                | 1.4       | 10.4                    | 11.0      | 7.0     | 7.9 | 12.7      | 14.1      | 8.2        | 9.3       |
| Oct 2004 | 8.9              | 9.5       | 0.5                                | 0.8       | 10.7                    | 10.8      | 7.6     | 8.0 | 13.9      | 16.1      | 8.2        | 10.0      |
| Nov 2004 | 8.8              | 9.4       | 0.5                                | 0.7       | 10.4                    | 11.0      | 7.0     | 7.9 | 12.7      | 14.1      | 8.2        | 9.3       |
| Dec 2004 | 8.6              | 9.6       | 0.5                                | 0.6       | 10.6                    | 11.0      | 7.8     | 7.9 | 13.0      | 13.8      | 6.8        | 7.9       |
| Jan 2005 | 8.5              | 8.9       | 0.3                                | 0.5       | 10.8                    | 11.1      | 7.8     | 8.1 | 15.3      | 20.3      | 7.9        | 8.8       |
| Feb 2005 | 8.3              | 8.9       | 0.3                                | 0.4       | 11.3                    | 11.6      | 7.7     | 7.8 | 14.5      | 15.7      | 7.2        | 9.4       |
| Mar 2005 | 7.9              | 8.5       | 0.3                                | 0.4       | 12.3                    | 13.4      | 7.8     | 7.9 | 14.5      | 17.2      | 7.5        | 7.9       |
| Apr 2005 | 8.2              | 9.3       | 0.5                                | 0.8       | 12.1                    | 12.6      | 7.8     | 7.9 | 21.8      | 23.3      | 8.1        | 8.6       |
| May 2005 | 11.4             | 11.5      | 1.2                                | 1.2       | 11.9                    | 12.6      | 7.5     | 7.8 | 20.0      | 24.6      | 8.3        | 9.3       |
| Jun 2005 | 10.1             | 10.9      | 1.3                                | 1.7       | 11.7                    | 12.1      | 7.7     | 7.8 | 17.2      | 19.9      | 9.1        | 12.0      |
| Jul 2005 | 10.2             | 11.1      | 1.4                                | 1.8       | 11.8                    | 12.6      | 7.6     | 7.7 | 16.2      | 20.5      | 9.7        | 15.0      |
| Aug 2005 | 9.9              | 10.7      | 1.4                                | 1.7       | 11.3                    | 11.6      | 7.8     | 8.0 | 16.4      | 18.8      | 9.3        | 10.5      |
| Sep 2005 | 9.5              | 10.2      | 1.1                                | 1.6       | 11.0                    | 11.1      | 7.7     | 8.0 | 18.9      | 22.2      | 10.0       | 13.8      |
| Oct 2005 | 9.0              | 10.0      | 0.7                                | 1.4       | 10.5                    | 10.7      | 7.7     | 7.9 | 18.3      | 24.5      | 10.4       | 11.5      |
| Nov 2005 | 8.3              | 9.4       | 0.7                                | 1.1       | 10.1                    | 10.6      | 7.7     | 7.9 | 18.3      | 21.3      | 10.5       | 13.6      |
| Dec 2005 | 8.3              | 9.6       | 0.5                                | 0.7       | 10.2                    | 10.7      | 7.6     | 8.0 | 15.6      | 18.3      | 7.5        | 10.5      |
| Jan 2006 | 7.3              | 7.9       | 0.5                                | 0.5       | 11.0                    | 11.7      | 7.6     | 8.2 | 18.5      | 27.4      | 7.9        | 8.4       |
| Feb 2006 | 7.0              | 8.5       | 0.5                                | 0.5       | 11.4                    | 11.6      | 8.0     | 8.2 | 15.1      | 16.4      | 8.3        | 9.1       |
| Mar 2006 | 7.8              | 9.1       | 0.4                                | 0.7       | 11.6                    | 11.9      | 7.9     | 8.1 | 16.9      | 21.3      | 8.0        | 8.2       |
| Apr 2006 | 8.3              | 9.1       | 0.5                                | 0.7       | 11.9                    | 12.0      | 7.8     | 8.0 | 15.0      | 16.7      | 8.3        | 8.5       |
| May 2006 | 9.1              | 10.5      | 0.8                                | 1.5       | 11.4                    | 11.7      | 7.7     | 8.0 | 16.3      | 19.0      | 7.6        | 9.2       |
| Jun 2006 | 9.6              | 10.5      | 1.1                                | 1.7       | 11.2                    | 11.5      | 7.9     | 7.9 | 19.8      | 18.0      | 9.0        | 9.0       |
| Jul 2006 | 10.2             | 10.9      | 1.6                                | 1.9       | 11.4                    | 12.3      | 7.8     | 8.0 | 16.1      | 17.5      | 9.4        | 9.7       |
| Aug 2006 | 9.9              | 11.4      | 1.4                                | 2.0       | 11.0                    | 11.4      | 7.7     | 7.9 | 16.9      | 23.1      | 9.6        | 10.3      |
| Sep 2006 | 9.4              | 9.8       | 1.0                                | 1.4       | 10.5                    | 10.8      | 7.8     | 7.9 | 16.4      | 17.0      | 10.8       | 11.0      |
| Oct 2006 | 9.0              | 9.6       | 0.7                                | 1.0       | 10.7                    | 11.0      | 7.6     | 7.7 | 15.7      | 16.9      | 10.0       | 11.8      |
| Nov 2006 | 8.9              | 9.6       | 0.6                                | 0.8       | 9.9                     | 10.3      | 7.6     | 7.8 | 15.1      | 17.9      | 9.1        | 9.5       |
| Dec 2006 | 8.7              | 9.8       | 0.6                                | 0.9       | 10.3                    | 10.8      | 7.5     | 7.9 | 15.1      | 16.6      | 8.9        | 9.6       |
| Jan 2007 | 8.2              | 8.9       | 0.5                                | 0.8       | 9.8                     | 10.4      | 7.6     | 8.0 | 13.5      | 15.5      | 8.0        | 9.2       |
| Feb 2007 | 7.8              | 8.6       | 0.3                                | 0.5       | 10.4                    | 11.4      | 7.8     | 8.0 | 14.7      | 21.3      | 8.0        | 8.4       |
| Mar 2007 | 7.9              | 8.6       | 0.3                                | 0.5       | 10.6                    | 11.6      | 7.8     | 7.9 | 14.2      | 15.6      | 9.1        | 11.8      |
| Apr 2007 | 8.3              | 9.3       | 0.4                                | 0.8       | 12.0                    | 12.1      | 8.0     | 8.1 | 15.5      | 16.4      | 8.9        | 9.2       |
| May 2007 | 8.8              | 9.6       | 0.8                                | 1.4       | 10.9                    | 11.3      | 7.7     | 8.1 | 16.2      | 17.0      | 9.7        | 10.4      |
| Jun 2007 | 9.4              | 10.7      | 1.2                                | 1.7       | 11.1                    | 11.2      | 7.5     | 8.0 | 16.5      | 17.1      | 10.0       | 10.4      |
| Jul 2007 | 9.6              | 10.5      | 1.3                                | 1.7       | 11.2                    | 11.6      | 7.9     | 8.0 | 15.5      | 16.6      | 10.4       | 11.5      |
| Aug 2007 | 9.7              | 10.6      | 1.4                                | 1.9       | 11.4                    | 12.0      | 7.7     | 8.5 | 15.2      | 16.3      | 9.8        | 10.6      |
| Sep 2007 | 9.4              | 10.4      | 1.1                                | 1.8       | 10.7                    | 11.0      | 7.8     | 8.0 | 16.0      | 18.6      | 10.7       | 12.8      |
| Oct 2007 | 9.1              | 10.0      | 0.9                                | 1.5       | 10.2                    | 11.2      | 7.6     | 7.8 | 16.9      | 19.0      | 11.9       | 14.2      |

| Date     | Temperature (°C) |           | Flow rate (m <sup>3</sup> /second) |           | Dissolved oxygen (mg/L) |           | pH (SU) |     | TP (µg/L) |           | SRP (µg/L) |           |
|----------|------------------|-----------|------------------------------------|-----------|-------------------------|-----------|---------|-----|-----------|-----------|------------|-----------|
|          | Daily Ave        | Daily Max | Daily Ave                          | Daily Max | Daily Ave               | Daily Max | Min     | Max | Daily Ave | Daily Max | Daily Ave  | Daily Max |
| Nov 2007 | 8.7              | 9.3       | 0.5                                | 1.0       | 10.1                    | 10.9      | 7.5     | 7.8 | 15.9      | 17.4      | 10.7       | 11.5      |
| Dec 2007 | 8.4              | 9.5       | 0.5                                | 0.7       | 10.7                    | 11.0      | 7.8     | 7.9 | 13.3      | 14.2      | 8.0        | 9.7       |
| Jan 2008 | 7.4              | 8.5       | 0.5                                | 0.6       | 11.2                    | 11.8      | 7.7     | 8.1 | 14.3      | 16.5      | 8.0        | 8.2       |
| Feb 2008 | 6.5              | 6.8       | 0.5                                | 0.5       | 11.5                    | 12.2      | 7.7     | 7.8 | 14.8      | 15.4      | 9.3        | 11.2      |
| Mar 2008 | 6.0              | 6.6       | 0.5                                | 0.6       | 11.6                    | 11.9      | 7.6     | 7.8 | 14.5      | 15.4      | 8.6        | 8.9       |
| Apr 2008 | 7.8              | 8.9       | 0.7                                | 1.1       | 11.8                    | 12.1      | 7.6     | 7.8 | 13.1      | 13.7      | 8.0        | 8.7       |
| May 2008 | 8.6              | 9.5       | 0.7                                | 1.2       | 11.5                    | 11.9      | 7.6     | 7.9 | 14.6      | 15.2      | 8.4        | 8.9       |
| Jun 2008 | 9.7              | 10.6      | 1.4                                | 2.0       | 11.7                    | 12.0      | 7.8     | 7.9 | 17.1      | 18.0      | 8.4        | 8.9       |
| Jul 2008 | 9.9              | 10.7      | 1.5                                | 1.9       | 11.6                    | 11.9      | 7.7     | 7.8 | 17.0      | 18.0      | 9.2        | 9.8       |
| Aug 2008 | 9.6              | 10.3      | 1.3                                | 1.7       | 10.9                    | 11.1      | 7.7     | 7.9 | 14.9      | 15.6      | 9.1        | 10.1      |
| Sep 2008 | 9.4              | 10.7      | 1.1                                | 1.8       | 10.4                    | 11.1      | 7.6     | 7.7 | 15.0      | 16.4      | 8.3        | 9.5       |
| Oct 2008 | 9.0              | 10.4      | 0.6                                | 1.0       | 9.8                     | 10.3      | 7.5     | 7.7 | 16.1      | 17.4      | 8.7        | 9.8       |
| Nov 2008 | 8.7              | 9.3       | 0.6                                | 0.9       | 9.6                     | 10.2      | 7.5     | 7.8 | 17.2      | 18.2      | 10.0       | 10.7      |
| Dec 2008 | 8.5              | 9.1       | 0.5                                | 0.5       | 10.8                    | 11.1      | 7.1     | 7.7 | 12.0      | 15.4      | 7.0        | 9.8       |
| Jan 2009 | 8.4              | 9.3       | 0.3                                | 0.5       | 10.2                    | 11.1      | 7.5     | 7.8 | 12.1      | 14.0      | 7.0        | 7.1       |
| Feb 2009 | 7.0              | 7.5       | 0.3                                | 0.4       | 11.9                    | 12.1      | 7.6     | 7.7 | 13.7      | 16.8      | 7.4        | 7.8       |
| Mar 2009 | 6.9              | 7.2       | 0.3                                | 0.5       | 12.1                    | 12.6      | 7.7     | 7.9 | 14.6      | 18.4      | 8.1        | 8.5       |
| Apr 2009 | 7.9              | 9.8       | 0.6                                | 1.2       | 11.6                    | 12.2      | 7.7     | 7.8 | 16.7      | 17.2      | 8.7        | 9.9       |
| May 2009 | 9.0              | 10.0      | 0.8                                | 1.3       | 12.1                    | 12.6      | 7.5     | 7.7 | 15.1      | 15.9      | 7.9        | 8.0       |
| Jun 2009 | 9.5              | 10.1      | 1.1                                | 1.6       | 11.4                    | 11.6      | 7.5     | 7.8 | 18.1      | 25.9      | 8.4        | 11.2      |
| Jul 2009 | 9.6              | 10.3      | 1.4                                | 1.8       | 12.0                    | 12.5      | 7.4     | 8.0 | 16.1      | 18.1      | 8.7        | 9.2       |
| Aug 2009 | 9.8              | 10.7      | 1.7                                | 2.0       | 10.9                    | 11.3      | 7.3     | 7.6 | 15.1      | 17.7      | 8.5        | 8.7       |
| Sep 2009 | 9.2              | 10.4      | 1.1                                | 1.7       | 10.8                    | 11.7      | 7.4     | 7.6 | 16.5      | 18.2      | 10.1       | 11.8      |
| Oct 2009 | 9.1              | 9.4       | 0.6                                | 0.8       | 10.4                    | 10.5      | 7.4     | 7.8 | 15.8      | 16.8      | 9.8        | 10.7      |
| Nov 2009 | 9.0              | 9.7       | 0.6                                | 1.8       | 10.0                    | 10.3      | 7.7     | 7.8 | 15.6      | 16.2      | 10.2       | 10.3      |
| Dec 2009 | 8.4              | 9.1       | 0.6                                | 1.1       | 10.8                    | 12.0      | 7.7     | 8.0 | 13.6      | 17.2      | 8.2        | 10.0      |

Notes:

- In previous reports the maximum daily TP from the LSC effluent for Sep. 2006 was erroneously reported as 170 (µg/L) instead of 17 (µg/L). This has been corrected in the present report.
- Information regarding QA of these data is available on request.