



Cornell University

# 2021 Drinking Water Quality Report (for Calendar Year 2020)

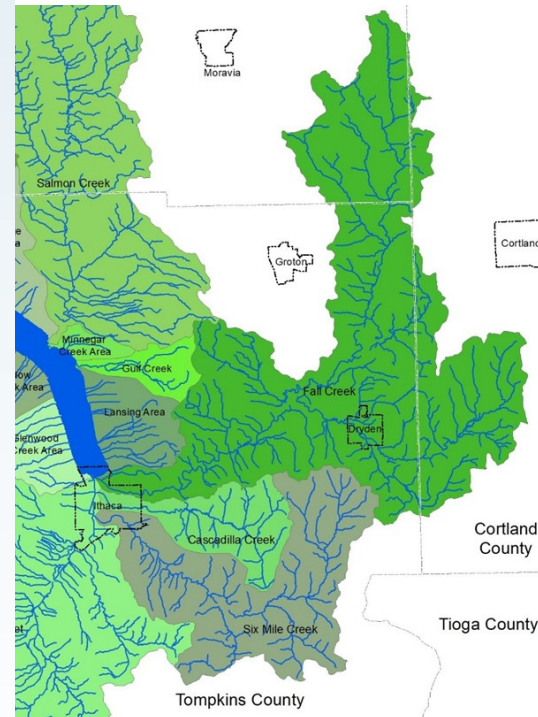
Cornell University is providing this Drinking Water Quality Report to our customers because we want you to be fully informed about your water quality and the need to protect its source. This overview of last calendar year’s water quality includes details about where your water comes from, what it contains, and how it compares to New York State standards. The staff of Cornell’s Water System have worked tirelessly through the pandemic to provide the highest quality water and to maintain processes. They are some of the many heroes that serve the community’s needs.

If you have any questions about this report or your drinking water, please contact:

Christopher Lynn Bordlemay Padilla, Water Manager  
607.255.1408 or [water@cornell.edu](mailto:water@cornell.edu).

## Cornell University Source Water

Fall Creek is the source of water for the Cornell University Water System (CUWS). The water intake is on Forest Home Drive near the Cornell Botanic Gardens Arboretum entrance. Fall Creek originates in Lake Como northeast of Ithaca and flows through a 125 square mile watershed, indicated by the dark green area on the figure above and to the right. Flow in Fall Creek for most of 2020 was adequate with an average of 168 cubic feet per second (cfs). We did experience a short, but intense, period of drought from late August through September where flows lowered to less than 20 cfs. Cornell withdraws a maximum of 5.5 cfs to put it in perspective! Our system serves the University’s campus and supplies water to City customers in the Cornell Heights area and to Bolton Point-Town of Ithaca customers on the south side of Fall Creek in the Forest Home area. The Water Filtration Plant is located at 310 Caldwell Road, Ithaca, NY 14850.



### Table of Contents

- Water Treatment Process .....A
- Health Effects and  
Individuals At-Risk .....B
- Water Quality Data.....C
- General Water Information .....D
- Detected Contaminants .....E
- Non-Detected Contaminants .....F
- Major Modifications Completed..G
- Future Projects.....H
- Water Conservation Measures.....I
- Security Concerns.....J
- Source Water Protection.....K

**Pre-Treatment:** Screens are used to prevent leaves and debris from entering the treatment process. Coagulants such as Alum or Poly-aluminum chloride are added to remove impurities.

**Mixing:** The water is rapidly mixed to distribute the treatment chemicals evenly.

**Coagulation and Flocculation:** The water flows into chambers where the coagulants react with impurities in the water, causing them to form larger, easier-to-settle particles called flocs.

**Sedimentation:** Flocculated water flows into large basins where the floc particles settle to the bottom, where they are removed and chemicals from the water.

**Filtration:** Following the settling process, water flows through layers of sand and gravel where further removal of particulate impurities occurs.

**Post-Treatment:** Chlorine is added to inhibit bacterial growth in the distribution system, and a corrosion inhibitor is added to prevent potential leaching of lead and copper into the water from plumbing systems.

B.

-

-

- -

- -

C.

## INTRODUCTION

contaminant that is not detected in our water.

## C. Water Quality Data (cont.)

**TOTAL COLIFORMS:** Coliforms are bacteria that are naturally present in the environment and are used as an indicator that other, potentially harmful, bacteria may be present. Total coliforms are tested on a weekly basis.

**LEAD AND COPPER:** The Cornell water system was required to sample for lead and copper in 2020. There were no violations of State standards. We will sample again during the summer of 2023. The State allows testing less frequently than once per year for certain contaminants such as lead and copper since the concentrations of these contaminants do not change frequently. We will comply with the Lead and Copper Rule Revisions (LCRR) when implemented.

**SODIUM:** People who are on severely restricted sodium diets should not drink water containing more than 20 mg/l of sodium. Since the 2020 level of sodium in Cornell water was 29 mg/l, customers on severely restricted sodium diets might wish to consult their health care providers. People who are on moderately restricted sodium diets should not drink water containing more than 270 mg/l of sodium. The sodium levels of the water from all three local public water systems are well below this level.

**EXCHANGES:** During the course of the year, for maintenance, or for emergency help, potable water is exchanged among the three Ithaca area water systems. If you wish to know if this occurred, the time periods, and the water volumes, please call the Cornell Water System.

**UCMR:** Required testing by the EPA for the Unregulated Contaminant Monitoring Rule #4 (UCMR4) began in the summer of 2018 and continued into 2020. Information about the rule and the contaminants can be found on the EPA website (epa.gov; search for UCMR4). The results for Cornell UCMR3 and for the on-going UCMR4 sampling can be found on the Cornell [Energy and Sustainability](#) website.

## D. General Water Information

**Table 1: General Water Data - 2020**

Water System Public Water Supply ID	Cornell University 5417680
Water source	Fall Creek
Approx Population Served	31,000
Number of Service Connections	266
Total Production in 2020 (MG)	309.6
Average Daily Withdrawal (MGD)	0.906
Average Daily Delivered (MGD)	0.848
Average Daily Lost (MGD)	0.058
Annual Charge per 1000 gallons	\$12.41

**Table 2: General Water Quality Data - 2020**

Water System Public Water Supply ID	Units	Cornell University 5417680
Turbidity (EP)	NTU	0.058
Total Hardness	mg/L	150
Total Alkalinity	mg/L	136
Total Dissolved Solids	mg/L	NR
Iron (Soluble)	mg/L	NR
Chlorine Residual (EP)	mg/L	1.33
Chlorine Residual (POU)	mg/L	0.30
Turbidity (POU)	NTU	0.149
Total Organic Carbon (EP)	mg/L	1.62
Dissolved Organic Carbon (EP)	mg/L	1.58

NR=Not Required, EP=Entry Point, POU=Point of Use

Definitions of NTU and mg/L found in Section E.

## COMMON WATER QUALITY DEFINITIONS

**ALKALINITY** is a measure of the capability of water to neutralize acids. Bicarbonates, carbonates and hydroxides are the most common forms of alkalinity.

**HARDNESS** is a measure of the calcium and magnesium content of natural waters. The harder the water, the greater the tendency to precipitate soap and to form mineral deposits. Alkalinity and hardness occur naturally due to the contact of water with minerals in the earth's crust.

**pH** indicates how acidic or alkaline a water sample is. A value of 7 is neutral, 0-6 is acidic and 8-14 is alkaline.

**TOTAL ORGANIC CARBON (TOC)** is a measure of the organic content of water. A high concentration of TOC in water may lead to high levels of disinfection byproducts.

**TURBIDITY** is a measure of the cloudiness of water. It is an indication of the effectiveness of water treatment. NYS regulations require that treated water turbidity always be below 1 NTU (nephelometric turbidity unit). For filtered systems 95% of the composite effluent samples must be below 0.3 NTU.

## Interesting Water Facts

There are over 58,900 community water systems in the United States processing more than 34 billion gallons per day.

The average residence in the United States uses 107,000 gallons of water a year.

It takes 62,600 gallons of water to produce one ton of steel.

It takes 101 gallons of water to make one pound of wool or cotton.

Water acts as a natural buffer against extreme or rapid changes in the earth's temperature.

It would take 219 million gallons of water to cover one square mile with one foot of water.

One gallon of water weighs 8.34 pounds.

When the weather is very cold outside, let the cold water drip from the faucet served by exposed pipes. Running water through the pipe - even at a trickle - helps prevent pipes from freezing.

Water is the second most common molecule in the universe. The most common is hydrogen gas, H<sub>2</sub>.

There is ice on the poles of the moon, and on the poles of Mars and Mercury.

## E. Detected Contaminants

### Notes and Definitions for Tables 3-4:

**AL (action level):** The concentration of a contaminant that, if exceeded, triggers additional treatment or other requirements that a water system must follow.

**Lead and Copper:** The maximum level values reported for lead and copper represent the 90th percentile of the samples taken. Testing for these metals is only required every three years.

**HAA5 (haloacetic acids):** These are a group of chemicals that are formed when chlorine or other disinfectants used to control microbial contaminants in drinking water react with naturally occurring organic and inorganic matter in water. The regulated haloacetic acids, known as HAA5, are monochloroacetic, dichloroacetic, trichloroacetic, monobromoacetic, and dibromoacetic acids. The maximum level detected of HAA5 is the highest of the four quarterly running annual averages calculated during the year and is the basis of the MCL for these compounds.

**Maximum Level Detected:** The highest measurement detected for the contaminant during the year. For total THMs and HAA5 the maximum level detected is the highest of the four quarterly running annual averages during the year.

**MCL (maximum contaminant level):** The highest level of a contaminant that is allowed in drinking water. MCLs are set as close to the MCLGs as feasible.

**MCLG (maximum contaminant level goal):** The level of a contaminant in drinking water below which there is no known or expected risk to health. MCLGs allow for a margin of safety.

**mg/L (milligrams per liter):** Corresponds to one part in one million parts of liquid (parts per million, ppm).

**MRDL (maximum residual disinfection level):** The highest level of a disinfectant allowed in drinking water.

There is convincing evidence that addition of a disinfectant is necessary to control microbial contaminants.

**MRDLG (maximum residual disinfectant level goal):** The level of a drinking water disinfectant below which there is no known or expected risk to health. MRDLGs do not reflect the benefits of the use of disinfectants to control microbial contamination.

**N/A (not applicable):**

**ND (not detected):** Laboratory analysis indicates that the constituent is not present.

**NTU (nephelometric turbidity unit):** A turbidity of approximately 5 NTU is barely noticeable by the average person.

**pCi/L (picocuries per liter):** A measure of radioactivity in water.

**Range:** The range of lowest to highest measurements detected for contaminants measured during the year.

**THM (trihalomethane):** These are a group of chemicals that are formed when chlorine or other disinfectants used to control microbial contaminants in drinking water react with naturally occurring organic and inorganic matter in water. The regulated trihalomethanes are bromodichloromethane, bromoform, chloroform, and dibromochloromethane. These compounds result from the disinfection of water with chlorine. The maximum level detected of THMs is the highest of the four quarterly running annual averages calculated during the year and is the basis of the MCL for these compounds.

**TT (treatment technique):** A required process intended to reduce the level of a contaminant in drinking water.

**µg/L (micrograms per liter):** Corresponds to one part in one billion parts of liquid (parts per billion, ppb).

**PFOA/PFOS/1-4 Dioxane:** Beginning in the Fall of 2020, NYS required sampling and analysis for Perfluorooctanic Acid, Perfluorooctane Sulfonate and 1-4 Dioxane. These are released into the environment from widespread use in commercial and industrial applications. None were detected in 2020.

## E. Detected Contaminants (cont.)

Table 3a. Contaminant	Units	Violation Y/N	Date of Sample	Maximum Level Detected (Range)	Regulatory Limit	MCLG	Likely Source of Contamination
<b>Microbiological contaminants</b>							
Turbidity	NTU	No	2020	0.100	TT=<1 NTU	N/A	Soil runoff.
Turbidity samples	% below MCL	No	daily	100% <0.3NTU	TT=95% of samples <0.3NTU	N/A	Soil runoff.
<b>Disinfection By-Products</b>							
Total THMs Site 1 Site 2 Site 3 Site 4	µg/l	No	2020	66.6 (64.0-69.8) 53.1 (46.8-57.7) 65.2 (61.3-71.6) 64.8 (60.8-70.5)	MCL = 80 Running Annual Average	N/A	By-product of drinking water chlorination.
Total HAA5 Site 1 Site 2 Site 3 Site 4	µg/l	No	2020	25.2 (20.6-28.7) 27.3 (21.3-32.2) 29.8 (27.3-32.8) 25.4 (22.2-29.9)	MCL = 60 Running Annual Average	N/A	By-product of drinking water chlorination.
Chlorine Residual	mg/l	No	2020	1.3 (0.6-3.5)	MRDL=4	N/A	Due to drinking water chlorination.
<b>Inorganics</b>							
Barium	mg/l	No	12/07/20	0.025	MCL=2	2	Drilling wastes; discharge from metal refineries; erosion of natural deposits.
Chromium	mg/l	No	12/07/20	0.004	MCL=0.10	N/A	Discharge from steel and pulp mills; erosion of natural deposits.
Copper	mg/l	No	2020	0.33 (0.006-0.80)	AL=1.3	1.3	Household plumbing corrosion; erosion of natural deposits; wood preservatives.
Lead	µg/l	No	2020	2.7 (ND-18.0)	AL=15.0	0	Household plumbing corrosion; erosion of natural deposits.
Nickel	mg/l	No	12/07/20	0.0012	N/A	N/A	Discharge from steel and pulp mills, erosion of natural deposits.
Nitrate	mg/l	No	12/07/20	1.1	MCL=10	10	Fertilizer runoff; septic tank leaching; sewage; erosion of natural deposits.
Sodium	mg/l	No	12/07/20	29	See Water Quality, Section C	N/A	Naturally occurring; road salt; animal waste; water softeners; water treatment chemicals.
<b>Radioactive</b>							
Radium-228	pCi/l	No	10/31/17	.907	MCL=5	0	Erosion of natural deposits.

## E. Detected Contaminants (cont.)

**Table 3b.**  
**Detected Unregulated Contaminants (from 2013 UCMR3 list on Page 8)**

Contaminant	Units	Violation Y/N	Date of Sample	Maximum Level Detected (Range)	Regulatory Limit	MCLG	Likely Source of Contamination
Chlorate	µg/L	No	2013	277 avg	Unregulated	N/A	Chlorate ion is a known byproduct of the drinking water disinfection process, forming when sodium hypochlorite or chlorine dioxide are used in the disinfection process.
Hexavalent Chromium	µg/L	No	2013	0.017 avg	Unregulated	N/A	Hexavalent chromium can enter waterways through the erosion of natural deposits or from industrial discharges.
Chromium, Total	µg/l	No	2013	0.099 avg	Unregulated	N/A	Chromium is a metallic element found in rocks, soils, plants, and animals. It is used in steel making, metal plating, leather tanning, corrosion inhibitors, paints, dyes, and wood preservatives
Strontium, Total	µg/L	No	2013	74.4	Unregulated	N/A	Strontium occurs nearly everywhere in small amounts. Air, dust, soil, foods and drinking water all contain traces of strontium. Ingestion of small amounts of strontium is not harmful. However, high levels of strontium can occur in water drawn from bedrock aquifers that are rich in strontium minerals.

## E. Detected Contaminants (cont.)

**Table 3c.**  
**Detected Unregulated Contaminants , UCMR4**

Contaminant	Units	Violation Y/N	Date of Sample	Maximum Level Detected (Range)	Regulatory Limit	MCLG	Likely Source of Contamination
Total Haloacetic Acids (HAA5)	µg/L	No	2019	23.7 avg	Unregulated	N/A	By-product of the drinking water disinfection process
Total Haloacetic Acids (HAA6Br)	µg/L	No	2019	3.76 avg	Unregulated	N/A	By-product of the drinking water disinfection process
Total Haloacetic Acids (HAA9)	µg/l	No	2019	27.5 avg	Unregulated	N/A	By-product of the drinking water disinfection process
Dichloroacetic Acid [2C]	µg/L	No	2019	9.16 avg	Unregulated	N/A	By-product of the drinking water disinfection process
Trichloroacetic Acid	µg/L	No	2019	14.6 avg	Unregulated	N/A	By-product of the drinking water disinfection process
Bromochloroacetic Acid [2C]	µg/L	No	2019	1.87 avg	Unregulated	N/A	By-product of the drinking water disinfection process
Bromodichloroacetic Acid	µg/L	No	2019	1.81	Unregulated	N/A	By-product of the drinking water disinfection process
Chlorodibromoacetic Acid	µg/L	No	2019	0.31	Unregulated	N/A	By-product of the drinking water disinfection process
Manganese	µg/L	No	2019	9.25	Secondary Standard	50	Runoff of natural sediment

**UCMR4 parameters not detected:** Monochloroacetic Acid, Monobromoacetic Acid, Dibromoacetic Acid, Tribromoacetic Acid, Germanium, BHA, o-Toluidine, Quinoline, 1-Butanol, 2-Methoxyethanol, 2-Propen-1-ol, alpha-BHC (alpha-Hexachlorocyclohexane), Chlorpyrifos, Dimethipin, Ethoprop, Oxyfluorfen, Profenofos, Tebuconazole, Permethrin (total), Tribufos

As part of the **UCMR4**, testing was also performed for Cyanotoxins in 2018, but none were detected.

## F. Non-Detected Contaminants

**Table 4a.**

CONTAMINANT	CUWS 2020
<b>Microbiological</b>	
Total Coliform	X
E. Coli	X
<b>Inorganics</b>	
Antimony	X
Arsenic	X
Asbestos	X
Beryllium	X
Cadmium	X
Color	NR
Cyanide	X
Fluoride	X
Mercury	X
Nitrite	X
Selenium	X
Silver	NR
Thallium	X
<b>Synthetic Organics &amp; Pesticides; Groups 1 &amp; 2</b>	
Alachlor	X
Aldicarb	X
Aldicarb sulfoxide	X
Aldicarb sulfone	X
Atrazine	X
Carbofuran	X
Chlordane	X
Dibromochloropropane	X
2,4-D	X
Endrin	X
Ethylene dibromide	X
Heptachlor	X
Heptachlor epoxide	X
Lindane	X
Methoxychlor	X
PCB - aroclor 1016	X
PCB - aroclor 1221	X
PCB - aroclor 1232	X
PCB - aroclor 1242	X
PCB - aroclor 1248	X
PCB - aroclor 1254	X
PCB - aroclor 1260	X
Pentachlorophenol	X
Toxaphene	X
2,4,5-TP (Silvex)	X
Aldrin	X
Benzo(a)pyrene	X
Butachlor	X
Carbaryl	X
Dalapon	X
Bis (2-ethylhexyl) adipate	X
Bis (2-ethylhexyl) phthalate	X
Dicamba	X
Dieldrin	X
Dinoseb	X
Glyphosate	NR
Hexachlorobenzene	X
Hexachlorooxyclopentadiene	X
3-Hydroxycarbofuran	X
Methomyl	X
Metolachlor	X

X = Monitored, but not detected

D = Refer to detected list ,

DU3 = Refer to detected unregulated contaminant list, Table 3b,

DU4 = Refer to detected unregulated contaminant list, Table 3c.

NR = Not required and not monitored in the past five years

UCMR = Unregulated Contaminant Monitoring Requirements

CONTAMINANT	CUWS 2020
Metribuzin	X
Oxamyl vydate	X
Picloram	X
Propachlor	X
Simazine	X
<b>Principal Organics</b>	
Benzene	X
Bromobenzene	X
Bromochloromethane	X
Bromomethane	X
N-Butylbenzene	X
sec-Butylbenzene	X
tert-Butylbenzene	X
Carbon tetrachloride	X
Chlorobenzene	X
Chloroethane	X
Chloromethane	X
2-Chlorotoluene	X
4-Chlorotoluene	X
Dibromomethane	X
1,2-Dichlorobenzene	X
1,3-Dichlorobenzene	X
1,4-Dichlorobenzene	X
Dichlorodifluoromethane	X
1,1-Dichloroethane	X
1,2-Dichloroethane	X
1,1-Dichloroethene	X
cis-1,2-Dichloroethene	X
trans-1,2-Dichloroethene	X
1,2-Dichloropropane	X
1,3-Dichloropropane	X
2,2-Dichloropropane	X
1,1-Dichloropropene	X
cis-1,3-Dichloropropene	X
trans-1,3-Dichloropropene	X
Ethylbenzene	X
Hexachlorobutadiene	X
Isopropylbenzene	X
p-Isopropyltoluene	X
Methylene chloride	X
n-Propylbenzene	X
Styrene	X
1,1,1,2-Tetrachloroethane	X
1,1,2,2-Tetrachloroethane	X
Tetrachloroethene	X
Toluene	X
1,2,3-Trichlorobenzene	X
1,2,4-Trichlorobenzene	X
1,1,1-Trichloroethane	X
1,1,2-Trichloroethane	X
Trichloroethene	X
Trichlorofluoromethane	X
1,2,3-Trichloropropane	X
1,2,4-Trimethylbenzene	X
1,3,5-Trimethylbenzene	X
m-Xylene	X
o-Xylene	X
p-Xylene	X
Vinyl chloride	X
MTBE	X

CONTAMINANT	CUWS
<b>UCMR 1 2003</b>	
2,4-Dinitrotoluene	X
2,6-Dinitrotoluene	X
Acetochlor	X
DCPA mono-acid degradate	X
DCPA di-acid degradate	X
4,4'-DDE	X
EPTC	X
Molinate	X
Nitrobenzene	X
Perchlorate	X
Terbacil	X
<b>UCMR 2 2008</b>	
1,2-Diphenylbrazine	X
Diazinon	X
Disulfoton	X
Fonofos	X
Nitrobenzine	X
Prometon	X
Terbufos	X
2-Methylphenol	X
2,4-Dichlorophenol	X
2,4-Dinitrophenol	X
2,4,6-Trichlorophenol	X
Diuron	X
Linuron	X
<b>UCMR 3 2013</b>	
1,2,3-trichloropropane	X
Methyl bromide	X
Methyl chloride	X
HALON 1011	X
HCFC-22	X
1,3-butadiene	X
1,1-dichloroethane	X
1,4-dioxane (also analyzed in 2020)	X
Vanadium	X
Molybdenum	X
Cobalt	X
Strontium	DU3
Chromium1	DU3
Chromium6	DU3
Chlorate	DU3
PFOS (also analyzed in 2020)	X
PFOA (also analyzed in 2020)	X
PFBS	X
PFHxS	X
PFHpA	X
PFNA	X
<b>Radiological 2017</b>	
Gross alpha	X
Gross beta	X
Radium	D
<b>UCMR 4 2018-2020</b>	
Anatoxins	X
Cylindrospermopsin	X
Total Microcystin	X
UCMR4 List 1 (See table 3c.)	DU4



## G. Major Modifications Completed 2020

- Many projects were put on hold due to pandemic related concerns.
- Particle counters incorporated into the Water Filtration Plant computer systems to further optimize treatment.
- Conductivity meters incorporated into the Water Filtration Plant computer systems to monitor effect of road salts in Fall Creek.
- Additional design work was completed to install new sluice gates in the sedimentation basin.
- Computer network improvements continued to increase security.
- New technologies continued to be piloted for the Engineering School's [AguaClara](#) Program and other student research.
- Miscellaneous improvement projects such as new day tanks for the disinfection system, new mixing equipment, and new monitoring equipment were completed.
- Distribution system improvements were made to accommodate the North Campus Residential Expansion project.

## I. Water Conservation

2020, among all other things, saw a brief but intense period of drought where stream levels and ground water levels fell to lower than desired levels during late summer and early fall. A limited water advisory was implemented until water levels returned to normal.

Water conservation is very important to protecting our natural resource. You, too, can play a role in conserving water at work and at home by becoming conscious of the amount of water you are using and by looking for ways to use less whenever you can. It is not hard to conserve water. The following are some ideas that you can apply directly in your own facility or home:

- Use your water meter to detect hidden leaks. Turn off all taps and water using appliances, then record the meter reading and check the meter after 15 minutes. If it registers usage, you have a leak.
- The bathroom accounts for 75 percent of the water used inside the home.
- Put 10 drops of food coloring in your toilet tank. If the color shows up in the bowl without flushing, you have a leak to repair.
- It is common to lose up to 100 gallons a day from a toilet leak. Fix it, and you save more than 30,000 gallons a year.
- If every American home installed low-flow faucet aerators, the United States would save 250 million gallons of water a day.
- Do not hose down your driveway or sidewalk. Use a broom to clean leaves and other debris from these areas. Using a hose to clean a driveway can waste hundreds of gallons of water.
- Water your lawn only when it needs it. If you step on the grass and it springs back up when you move, it doesn't need water. If it stays flat, it does.
- Fix leaks as soon as they are found. A dripping faucet with a 1/16 inch stream wastes 100 gallons of water per day. Please contact your facility manager if you notice leaking water.
- Saving water can lower your power bills by reducing your demand for hot or pumped water. These few simple steps will preserve the resource for future generations and also save up to 30% on your bill.

## J. Security

Generally, security threats to the local water systems have consisted primarily of minor vandalism and property damage. However, our security efforts focus to a high degree on the much less likely, but more serious, threat of intentional contamination of the water supply and cyber attacks. We have performed security assessments of the entire system and updated our Emergency Response Plans and Vulnerability Assessments to cover the possibility of terrorism and attacks, including cyber attacks. Weaknesses in procedures have been corrected and improvements to increase the security of the infrastructure have been undertaken. Local police are aware of the security needs of the water system and have maintained increased patrolling of our facilities. Your awareness and reporting of suspicious activity throughout the system is appreciated.

## H. Future Projects and Capital Improvements 2021

- New sluice gates will be installed on the sedimentation basins.
- Miscellaneous improvement projects will be constructed throughout the water distribution system including implementation of a valve exercising program.
- Distribution system improvements needed for campus expansion will continue.
- Concrete repairs to basins and tanks at the Water Filtration Plant will be completed.
- New bulk storage tanks used for the disinfection process at the Water Filtration Plant will be designed and installed.
- Piloting new technologies for the student research projects will continue.
- Computer controls, both hardware and software, and network security improvements will be updated.
- Chemical feed systems will be evaluated and updated if necessary.
- Improvements to source water intake structures are planned.
- A perimeter security fence will be installed around the Water Filtration Plant with secure access gates.

Cornell Water Links

[Drinking Water Home](#)

[Lead Information](#)

[Past Water Quality Reports](#)

[Distribution System](#)

## K. Source Water Protection

The New York State Department of Environmental Conservation is in the process of developing a Source Water Protection Program for Cornell's surface drinking water source. A review and summary will be posted on our website and provided in next year's Annual Drinking Water Quality Report.

Work has begun to revise the Fall Creek Watershed Rules and Regulations, however a broader effort to revise/develop Rules and Regulations for the entire Cayuga Lake Basin are being explored in conjunction with the [Tompkins County Water Resources Council](#) and other local water purveyors.

We hope you and your family are staying safe and healthy. We want to assure you we are working hard to provide safe and reliable drinking water to the Cornell campus and surrounding community. Our staff conducted essential work during the pandemic, including collecting routine monitoring samples, monitoring the treatment, inspecting our facilities, reading meters, conducting important routine maintenance, and performing emergency repairs. Our staff is vital to keeping the water system operational. They all deserve the gratitude and respect that you can give. Without their dedication our system would not have successfully made it through 2020!

Thank you for your continued cooperation!

Cornell University Water

Christopher Lynn Bordlemay Padilla  
CU Water Filtration Plant  
310 Caldwell Road  
Ithaca, NY 14850

Phone: 607-255-1408  
E-mail: [water@cornell.edu](mailto:water@cornell.edu)

PLEASE  
PLACE  
STAMP