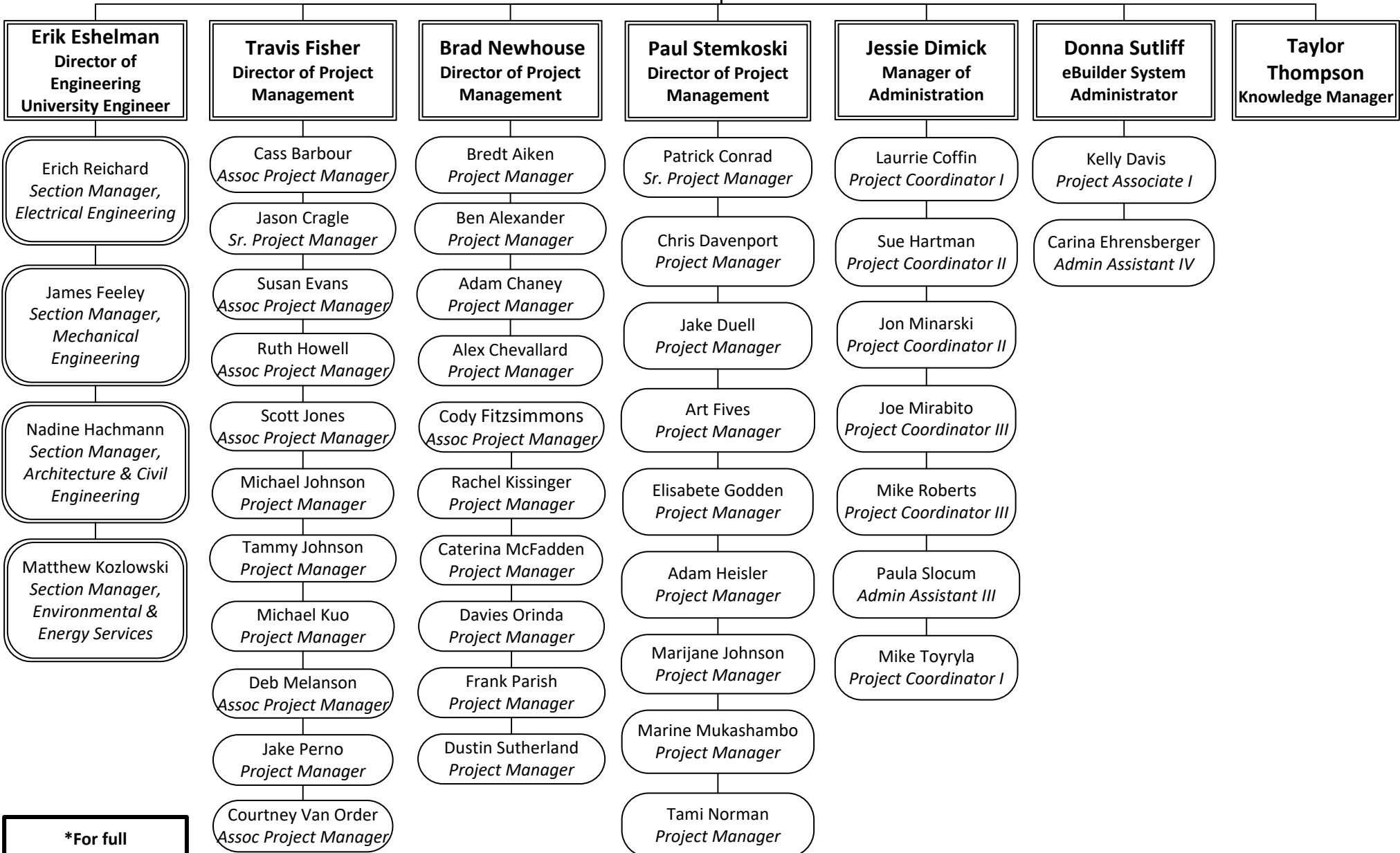


**Andrew Magré**  
Associate Vice President



**\*For full FE Team see page 2**



**Andrew Magré**  
Associate Vice President  
Engineering & Project Management

**Erik Eshelman, P.E.**  
Director of Facilities Engineering  
University Engineer

**Erich Reichard, P.E.**  
Electrical Engineering  
Section Manager

John Bell, P.E.  
*Sr. Electrical Engineer*

Ed Kratil  
*Facilities Designer*

Mark Scholeno  
*Electrical Engineer*

Jared Shipos  
*Sr. Electrical Designer*

Patrick Taylor  
*Sr. Electrical Engineer*

Hung Tran  
*Electrical Engineer*

Chris Wayman  
*Electrical Engineer*

**James Feeley, P.E.**  
Mechanical Engineering  
Section Manager

Thomas Jordan, P.E.  
*Sr. Mechanical Engineer*

Elizabeth Kolacki, P.E.  
*Sr. Mechanical Engineer*

Tyler Kost  
*Sr. Mechanical Designer*

Victoria Kramer, P.E.  
*Mechanical Engineer*

Eric LePore, P.E.  
*Mechanical Engineer*

Patrick Ockenfels  
*Mechanical Engineer*

Vacant Position  
*Sr. Mechanical Designer*

**Nadine Hachmann, AIA**  
Architecture and  
Civil Engineering  
Section Manager

Jason Coolbaugh  
*Architectural Associate*

Shane Dunn  
*Roof Program Manager*

Randall Herko, AIA  
*Sr. Architect*

Liesl Margolin  
*QA Manager*

Robert Murray, P.E., BECXP  
*Sr. Engineer*

Mike Niechwiadowicz  
*Building Code PM*

Quinn Olsen-Bieber, EIT  
*Sr. Structural Designer*

Jim Tofte  
*Civil Engineer*

Megan Walker, AIA  
*Architect*

Vacant Position  
*Structural Designer*

**Matthew Kozlowski, LEED**  
BD&C  
Environmental and Energy Services  
Section Manager

David Frostclapp  
*Engineer*

Casey Keech  
*Support Services Coordinator*

Madison Macumber  
*Admin IV*

Letty McFall  
*Utility Mapper*

Emily Mix  
*Utility Locator*

Jaimee Wilson  
*Senior Energy Engineer*

Vacant  
*Environmental Engineer*